

ESP Multi-Interface Serial Hubs

Serial Ports Over IP: Serial Connectivity At The Point of Need

FEATURES AND BENEFITS

- Selectable Serial Signaling
RS-232, RS-422, RS-485.
- Auto Install
Quick and consistent installations without onsite technical staff.
- RS-485 Multi-drop Modes
RTS, ADDC, Half-duplex.
- High Availability
Multi-host attachment allows for high availability solutions.
- Selectable Connection Methods
ESP-2 MI and ESP-4 MI
Telnet Server, COM Redirection
Raw TCP Client/Server, Serial Tunneling.
ESP-8 MI
COM Redirection.
- Browser-based Management
The ESP-2 MI and ESP-4 MI serial hubs include an internal web server which offers secure configuration and management.
- Single Port Mode
The ESP-2 MI and ESP-4 MI serial hubs' 'Single' mode preserves host resources when only one port is required.
- ESP-2 MI Power Input Options
Detachable barrel connector and latching screw-block.
- Soft Selectable Capability
The ESP-4 MI and ESP-8 MI serial hubs' signaling is soft selectable for flexibility.

Access serial devices over IP networks for a wide variety of industrial and commercial applications.

ESP multi-interface (MI) serial hubs, available in 2, 4 and 8 port models, allow serial COM/TTY ports to be placed at the point of need, anywhere on a local or remote LAN. These hubs allow Windows, Linux, AIX or SCO applications to communicate transparently with network-attached serial devices, as if they were directly connected. Custom applications are not required.

For solutions requiring one or two port connections, the compact ESP-2 MI serial hub provides serial over IP connectivity while satisfying the rigorous environmental demands and unique needs of industrial/factory automation applications.

ESP serial hubs permit structured wiring, thus reducing the need for costly and troublesome long-haul serial cabling.

In addition to COM port redirection, the ESP-2 MI and ESP-4 MI serial hubs offer serial tunneling and Telnet modes of operation. When configured to work in tandem, two units act as a virtual serial cable over IP networks. The onboard Telnet server enables Telnet clients to monitor and manage serially attached devices.

Browser-based Management

An internal web server offers a secure means to configure and manage the ESP-2 MI and ESP-4 MI serial hubs. All ESP serial hubs support Equinox powerful management software applications, which include EquiView Plus for Windows and ESPDIAG for Unix and Linux.



2-port model

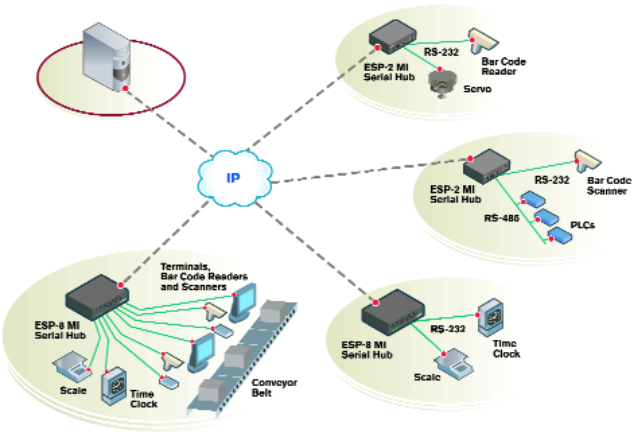


4-port model

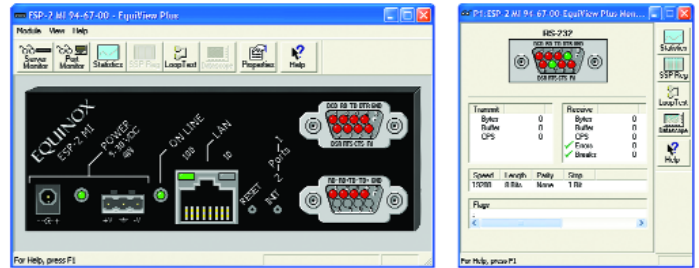


8-port model

ESP multi-interface serial hubs allow serial devices to become IP-enabled using RS-232, RS-422 and RS-485 protocols for industrial/manufacturing environments and commercial applications. The ESP-2 MI serial hub can also be attached to a DIN-rail to save space on the factory floor.



The ESP serial hubs are used in a variety of applications using RS-232, RS-422 and RS-485 protocols. Attach one or more serial devices as needed in your network.



Monitor and manage, on a port by port basis, serial devices connected to ESP serial hubs with EquiView Plus for Windows and ESPDIAG for UNIX.

TECHNICAL SPECIFICATIONS	ESP-2 MI (US) (9-wire)	ESP-2 MI (INTL) (9-wire)	ESP-4 MI (9-wire)	ESP-8 MI (10-wire)	Rack-Mount Shelf (For ESP-8 MI)	DIN-Rail Mount Kit (For ESP-2 MI)
PART #	990458	990460	990476	990407	790180	790226
MSRP	\$ 349	\$ 349	\$ 549	\$ 1,095	\$ 75	\$ 30
POWER	9VDC - 30VDC (at less than 4W)		5VDC (1A)	100-250V (0.5A)	N/A	N/A
CONNECTORS	DB-9 Male DTE		(4) DB-9 Male DTE	(8) RJ-45 DTE	N/A	N/A
DIMENSIONS	1.62" H 4.74" W 4.38" D		1.50" H 5.50" W 6.75" D	1.75" H 8.75" W 8.00" D	N/A	2U
SHIPPING WEIGHT	2.00 lbs.		3.00 lbs.	6.40 lbs.	N/A	N/A
SPEED (Kbps)	230		230	230	N/A	N/A
MODEM CONTROL	Full		Full	Full	N/A	N/A
SURGE SUPPORT	Surge suppression on every pin of every port				N/A	N/A
OS SUPPORT	Windows NT/2000/2003/XP, Citrix, Linux, AIX, Unix, SCO, and Solaris.					



CONFORMANCE

UL US LISTED CE ETL US
 UL 60950-1, CSA C22.2 No. 60950-1
 (cUL Listed) FCC Part 15 Class A, CE

ENVIRONMENTAL

Operating temperature: 0° - 40° C
 Humidity: 10% to 90%
 (Non-condensing)

WARRANTY

All ESP serial hubs have a five-year warranty.

PRODUCT EVALUATIONS

Try any product for 30-days. Sign-up online or by phone.

WWW.EQUINOX.COM

Visit www.equinox.com for additional product information, drivers, manuals, events, technical assistance and more.

Modular Adapters and Serial Reversing Cables

ESP-2/4 MI Serial Hub RJ-45 Modular Adapter (9-wire)		
RJ-45 to DB-9 Female adapter, DCE	210095	
DB-9 to RJ-45 Connector	210126	
ESP-8 MI Serial Hub Wiring Starter Kit (10-wire)		
Includes:		
(1) RJ-45 to DB-25 Male adapter, DTE	750133	
(1) RJ-45 to DB-25 Female adapter, DTE		
(1) RJ-45 to DB-25 Male adapter, DCE		
(1) RJ-45 to DB-25 Female adapter, DCE		
(1) RJ-45 to DB-9 Male adapter		
(1) RJ-45 to DB-9 Female adapter		
(1) RJ-45 to RJ45 Cisco Male adapter		
(1) 10-foot and 10-wire reversing modular cable		
ESP-8 MI Serial Hub RJ-45 Modular Adapters (10-wire)		
RJ-45 to DB-25 RS-232 Male adapter, DTE	210097	
RJ-45 to DB-25 RS-232 Female adapter, DTE	210098	
RJ-45 to DB-25 RS-232 Male adapter, DCE	210099	
RJ-45 to DB-25 RS-232 Female adapter, DCE	210100	
RJ-45 to DB-9 RS-232 Male adapter, DTE	210101	
RJ-45 to DB-9 RS-232 Female adapter, DTE	210102	
RJ-45 to DB-25 RS-530 Male adapter, DTE	210103	
ESP-8 MI Serial Hub RJ-45 Serial Reversing Cables (10-wire)		
10-foot, reversing cable	690252	
25-foot, reversing cable	690253	
75-foot, reversing cable	690254	



One Dambrackas Way, Sunrise FL 33351
 1-800-275-3500 - 954-746-9000, Ext. 7110
 sales@equinox.com - intl@equinox.com

Avocent, the Avocent logo and Equinox are registered trademarks of Avocent Corporation or its affiliates. All other marks are the property of their respective owners.
 © 2005, Avocent Corporation.