



# ASE Models 402 & 412

## Key features

- 1000 MB of total analysis, dual inline capable
- Deployable in Fast Ethernet (Model 402-only) or Gigabit Ethernet to Premises Technologies
- IP Transport software
- Voice over IP (VoIP) analysis capability with 2,000 concurrent call analysis
- Application analysis capability with Server Connect and Server Response time metrics
- LAN management port interface
- Real-time SNMP events
- 4,096 site to site IP Circuits for SLA validation
- LinkSafe- fail over capabilities
- Inband and out of band management capable

## 100/1000 Ethernet ASE

With INLINE mode capabilities

The Visual Performance Manager™ 100/1000 Ethernet ASE (available on version 6.1 or later) enhances the analysis functionality of Ethernet networks. The Analysis Service Element (ASE) provides up to 1000 Mbps of detailed network traffic analysis and management, while maintaining full wire speed pass-through of all traffic. It supports IP Transport monitoring IP convergence of bandwidth, applications, burst, and VOIP data traffic.

The Ethernet ASE is deployed on the LAN or WAN side of the customer edge router for flexible deployment options. The IP Transport ASE is designed to display traffic to or from the WAN, and ignore local LAN traffic (such as between a client and an Internet or application server) allowing for segmentation troubleshooting between the Network and the Applications at the Data Center.

Fluke Networks patented LinkSafe™ feature incorporating intelligent bypass relay technology to protect circuit connectivity in case of power failure. Optional installation services are available on this high speed hardware ASE.



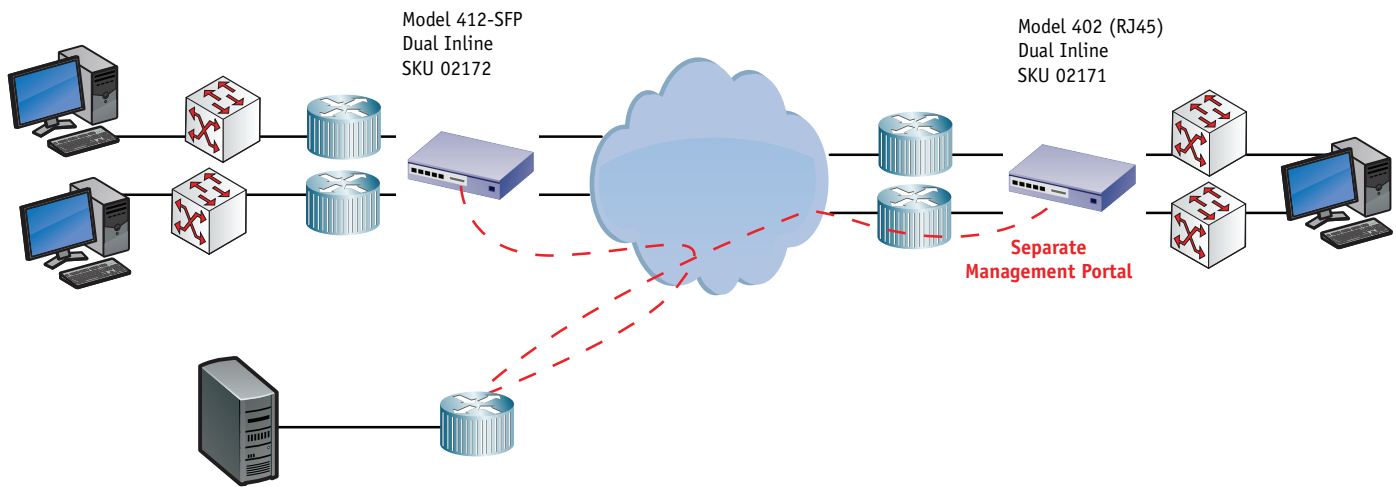
Ethernet Inline ASE front view



Ethernet Inline ASE rear view



# Model 402/412 Deployment Options



## Notes

- IP Transport Image only
- M402 LinkSafe Feature acts like a wire on power failure
- M412-SFP LinkSafe with dual power supply
- Dual Inline port RJ-45 or flexible SM MM, SM and RJ45
- Inline only option
- 4,096 IP Circuits
- 2,000 Concurrent calls

- 1,200,000 Daily Calls
- Separate Physical Layer View
- Aggregated View at Port

## Customer Responsibilities

- Space & Power for ASEs & Customer Server
- Ethernet connection between ASE & Customer Router
- Customer Server installation & Maintenance
- Optional Software packages available

## Customer Hosted Visual Performance Manager

- Visual Performance Manager 6.1
- Integrates with Data Center Application Performance Appliance
- Supports Network Performance Appliance using NetFlow data
- Integrated, scalable infrastructure

## Specifications

Model	402 (SKU 02171)	412 (SKU 02172)
Description	4 PORT MONITOR 100/1000 RJ45 APPLIANCE BASED ETHERNET ASE	4 PORT MONITOR 1 GBPS SFP APPLIANCE BASED ETHERNET ASE
Connections	RJ-45	SFP
Dimensions	1.69 x 17.09 x 24.69 (in)	
Weight	Chassis: 26 lbs Shipping box: 52 lbs	
Max Data Rate	1000 Mbps per interface	
Operating Temp	10o to +35oC (+50o to +95o F)	
Storage Temp	-40o to +65oC (-4o to +149o×F)	
Input Power	228 Watts, 100-240V, 50/60 Hz	
Redundant Power Supplies	Yes	
Bit Rate	100/1000 Mbps or 1000 Mbps	
Baud Rate	19200 or 9600 bps	
Parity	8 data bits, no parity	
Stop Bit	1 stop bit	
Electrical Format	EIA RS-232, DTE	