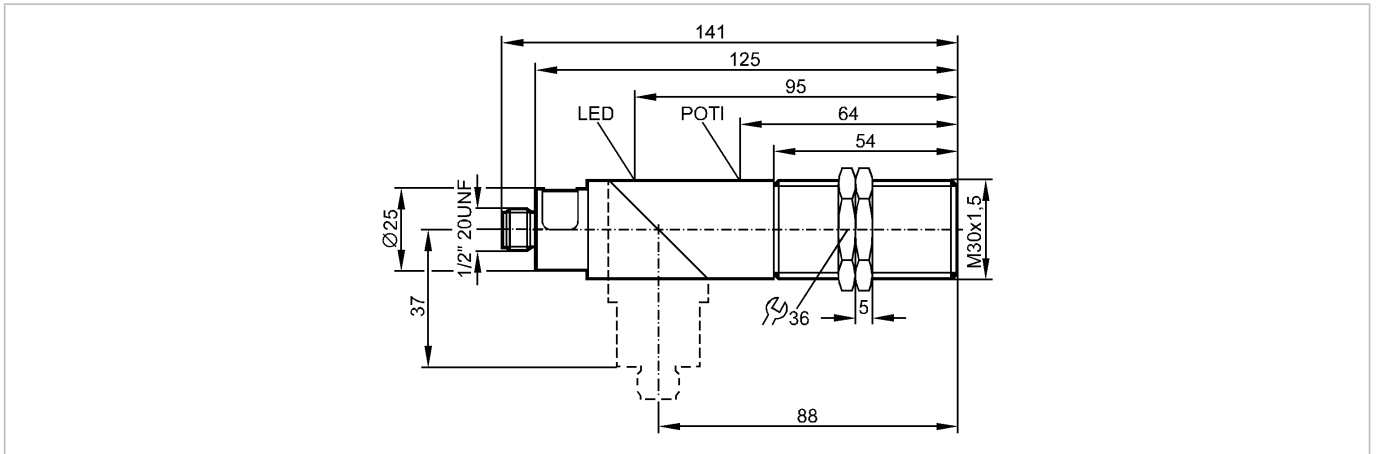


KI3513

KIE2015-FBOA/NI/LS100AK RT

Capacitive sensors



Made in USA

Product characteristics

Capacitive sensor
Plastic thread M30 x 1.5
Connector
Factory setting: normally open
Increased immunity to conducted radio frequency interference
Sensing range 15 mm; adjustable 3...15 mm; [nf] non-flush mountable

Electrical data

Electrical design	AC/DC
Operating voltage [V]	20...250 AC/DC
Protection class	I
Reverse polarity protection	no

Outputs

Output function	normally open / closed programmable
Voltage drop [V]	< 10 AC / < 8 DC
Minimum load current [mA]	5
Leakage current [mA]	< 2.5 (250 V AC) / < 1.7 (110 V AC) / < 1.5 (24 V DC)

Current rating

- Current rating (continuous) [mA]	250 (...50 °C) / 200 (...70 °C)
- Current rating (peak) [mA]	î: 2.2 A (20 ms / 0.5 Hz)
Short-circuit proof	no
Overload protection	no
Switching frequency [Hz]	25 AC / 50 DC

Range

Sensing range [mm]	15, adjustable 3...15 mm
Real sensing range (Sr) [mm]	15 ± 10 %
Operating distance [mm]	0...12.1

Accuracy / deviations

Correction factors	water = 1 / glass approx. 0.4 / ceramics approx. 0.2 / PVC approx. 0.2
Hysteresis [% of Sr]	1...15
Switch-point drift [% of Sr]	-15...15

Environment

Ambient temperature [°C]	-25...70
--------------------------	----------

KI3513

KIE2015-FBOA/NI/LS100AK RT

Capacitive sensors

Protection	IP 65
------------	-------

Tests / approvals

EMC	IEC 60947-5-2:	1997 + A1: 1999 + A2: 2003
MTTF	[Years]	294

Mechanical data

Mounting	non-flush mountable
Housing materials	PBT; brass nickel-plated
Weight	[kg] 0.164

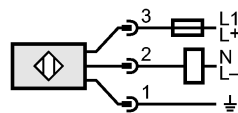
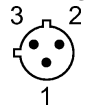
Displays / operating elements

Output status indication	LED	red
--------------------------	-----	-----

Electrical connection

Connection	1/2" connector
------------	----------------

Wiring



Note: miniature fuse to IEC60127-2 sheet 1, ≤ 2 A (fast acting)

Accessories

Accessories (included)	2 lock nuts; screwdriver
------------------------	--------------------------

Remarks

Remarks	Recommendation: check the unit for reliable function after a short circuit.
---------	---

Pack quantity	[piece] 1
---------------	-----------