



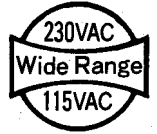
ETA-USA

High Quality Switching Power Supplies

600W

AC85~135V /
170~264V

input 115/230 VAC wide range, approved to international safety standards

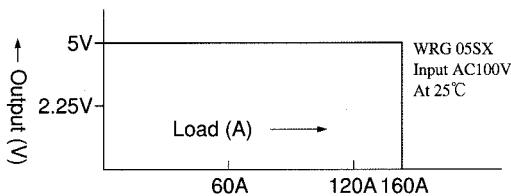


WRG-SX-U SERIES

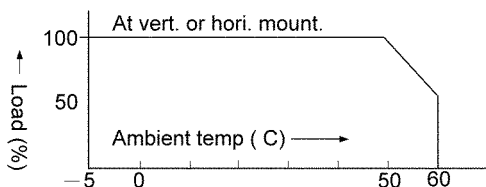
Output Table

MODEL	OUTPUT		EFFICIENCY
	VOLTAGE	CURRENT	
WRG05SX-U	5V	120A	80%
WRG06SX-U	6V	95A	80%
WRG12SX-U	12V	53A	81%
WRG15SX-U	15V	42A	84%
WRG24SX-U	24V	28A	86%
WRG30SX-U	30V	22A	87%
WRG369SX	36V	16A	86%
WRG48SX-U	48V	14A	87%

Load & Output V.



Output Derating



This series are single output and high power (600W) switching power supplies, which were developed for the use in the world wide input ranges of 85~132Vac & 170~264Vac with change of internal automatic selector and this switching power supply being remarkably miniature size and high efficiency, are available in this series.

Safety standards of UL, CSA and VIDE are already approved, conducted noise meets to FCC class B and VD E0871 class B.

We can offer various types of output voltage example.

Special Features

1. Smallest size 200(L)X170(W)X93(H)mm
2. Reasonable Price
3. Safety: Approved to UL,VDE,CSA(except for WRG 36SX)
4. Noise EMI : Based on VDE0871 class B
5. Input 85~132V / 170~264Vac with internal Automatic Selector
6. MTBF : 37,000 hrs. (at 40 °C)

Applications

Intelligence Equip., Communicators, Industrial Control Machines, Instruments.

WRG-SX SPECIFICATION

GENERAL SPECIFICATION

Over-current protection	:Fold back current limiter type with automatic recovery on removal of fault (constant current limiting).
Over-voltage protection	:Breaking out voltage type with reclosing by input of power source.
Parallel / Series connection	:O.K.
Remote Sensing / Remote control	:O.K.
Power fail Monitor	:O.K.
Switching period (FREQ.)	:200KHz Type.
Withstand voltage	:(Input-Output) :AC3000V(1Minute) :(Input-Chassis) :AC2500V (1Minute) :(Output-Chassis):AC 500V (1Minute)
Insulation resistance	:(Input-Output-Chassis):500M MIN.
Leakage current	:0.4mA Type. (25°C, Input 240Vac)
Weight	:about 2900g

ENVIRONMENT

Operating temperature	:-5 ~+50°C (Cooling fan discharge) There should be enough space of more then 20mm around the unit
Storage temperature	:-20~+85°C
Humidity	:85%
Vibration	:(5~10Hz) Amplitude (peak to peak) 10mm(constant)
Shock	:30G

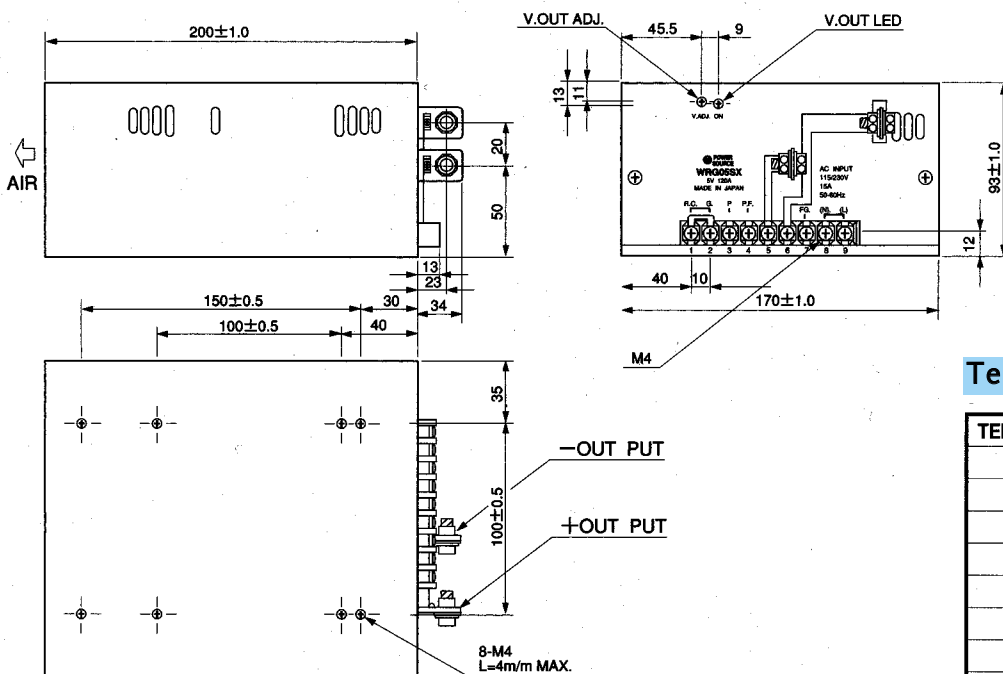
INPUT

Voltage	:100 / 120 / 200 / 240Vac 260 / 320Vdc (Automatic Input Select)
Range	:85~132 / 170~264Vac 220~360Vdc
Frequency	:47~440Hz
Current on full road	:14A MAX. (at 25°C, Input 115Vac, Full load)
Inrush current	
Phase	:Single

OUTPUT

Adjustable range	:± 10%
Ripple & noise	:(Output V x 1%) + 100mVp-p
Input regulation	:0.5% MAX. (85~132/+170~264Vac)
Load regulation	:1.0% MAX. (Input 100Vac, Load 0-100%)
Temperature coefficient	:0.03% / °C (-5~+50°C)
Drift / Time effect	:(Output V X 0.5%)+15mV/8H (After 1 H)
Hold-up time	:500mS MAX. (at 25°C, Rated-in-Output)
Holding time	:20mS MIN. (at 25°C, Rated-In-Output)

Dimension (mm)



Terminal Connection

TERMINAL No.	ICONNECTION
1	Remote Control
2	Remote Control Ground
3	Parallel
4	Power Fail
5	- Remote Sensing
6	+ Remote Sensing
7	Fraune Ground
8	Input AC-N
9	Input AC-L

◎端子台カバー付 Terminal cover is attached

(Note) Non Activated Resin Flux is used for Sodering on P.C.B.

ETA-USA

16315 Vineyard Blvd. Morgan Hill, CA 95037
Phone: 1-800-ETA-POWER, (408) 778-2793 Fax: (408) 779-2753

Visit Us On The Web at: <http://www.eta-usa.com/>
Or Email at: sales@eta-usa.com