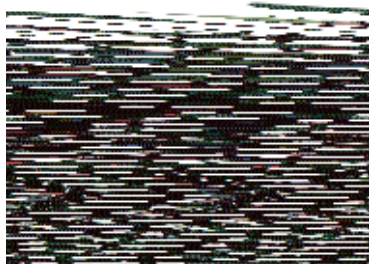


Diesel Generators

DIESEL MODEL		DG3E	DG6E
	Switchless Full Pow'R	•	•
	AC Voltmeter	•	•
	Hourmeter	•	•
	Low Oil Shutdown	•	•
	Large Fuel Tanks	•	•
	Tubular Roll Cage	•	•
	Neoprene Isolators	•	•
	Focal Vibration System (FVS)	•	•
	3 Year Commercial Warranty	•	•
ENGINE			
	Model	Hatz 1B30	Hatz 1B40
	Horsepower	5.5 Hp	9.9 Hp
	Cylinder(s)	1	1
	Displacement -cc	346	461.9
	Starting Systems (Battery not included on Electric Start Models)	12 Volt with Recoil	12 Volt with Recoil
RATING			
		3300W Max.	6000W Max
		3000W Rated	5500W Rated
		120/240 VAC	120/240 VAC
		25/12.5 Amps	45.8/22.9 Amps
RECEPTACLES			
	Straight (5-20R GFCI) 120 Volts	(2) 20 Amp	(4) 20 Amp
	Twist Lock (L530R) 120 Volts	(1) 30 Amp	(1) 30 Amp
	Twist Lock (L 1420R) 120/240 Volts	(1) 20 Amp	N/A
	Twist Lock (L 1430R) 120/240 Volts	N/A	(1) 30 Amp
	Fuel Capacity (U.S. Gallons)	2.75	4.6
	Operational Run Time on full tank	9 Hours	4.6 - 6 Hours
DIMENSIONS			
	Length	24-1/2"	32"
	Width	18-1/2"	20-1/2"
	Height	21-3/4"	23-3/4"
	Net Weight	172 Lbs.	246 Lbs.



DG3E

BALDOR GENERATORS

3815 Oregon Street • Oshkosh, WI 54902

1-800-872-7697 • (920) 236-4200 • Fax (920) 236-4217



DG6E

World Headquarters

Baldor Electric Company • P.O. Box 2400 • Fort Smith, AR 72902-2400 U.S.A.
Phone (479) 646-4711 • Fax (479) 648-5792 • International Fax (479) 648-5895

www.baldor.com