

DATA SHEET
SPECIFICATIONS
**MODEL #5318
AC GENERATOR**
LOAD/SPEED CHARACTERISTICS

RPM	VOLTAGE	AMPS
2,330	SHORT CIRCUIT	12.5 ARMS MAX
2,330	20.8 VRMS	6.32 ARMS
2,330	31.3 VRMS	OPEN CIRCUIT

OVERSPEED: 24,272 FOR 1 MIN

ELECTRICAL: DUAL/REDUNDANT
3 PHASE WYE WINDINGS

WEIGHT: ROTOR 2.30 LB MAX
STATOR 5.20 LB MAX

TEMPERATURE: -65°F TO 350°F

COOLING: CONVECTION

ALTITUDE: 0 TO 50,000 FT

COMPLIANCE: MIL-STD-461B
MIL-STD-462
MIL-STD-810D
MIL-STD-204D

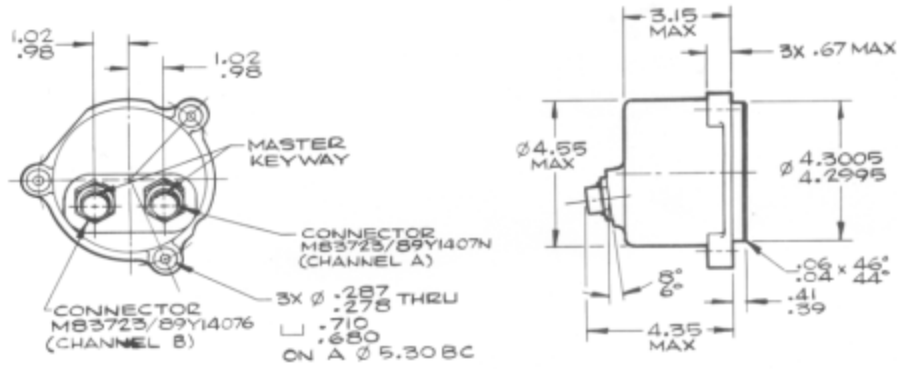
DESCRIPTION

Model 5318 provides electrical power for a FADEC system used on several GEAE commercial aircraft engines.

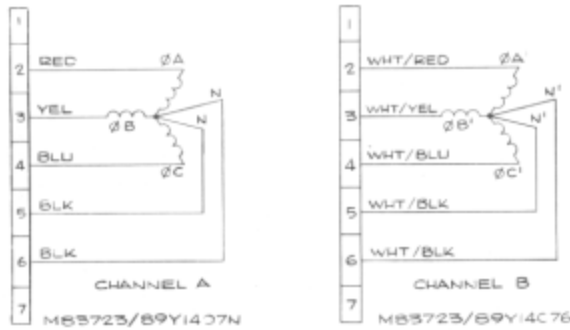
The rotor is a sleeved, segmented unit employing high energy product magnets. The stator comprises epoxy bonded laminations and dual three phase windings. An aluminum housing locates the stator and interfaces with the mounting pad.

The alternator is gear driven from an engine accessory gear box.

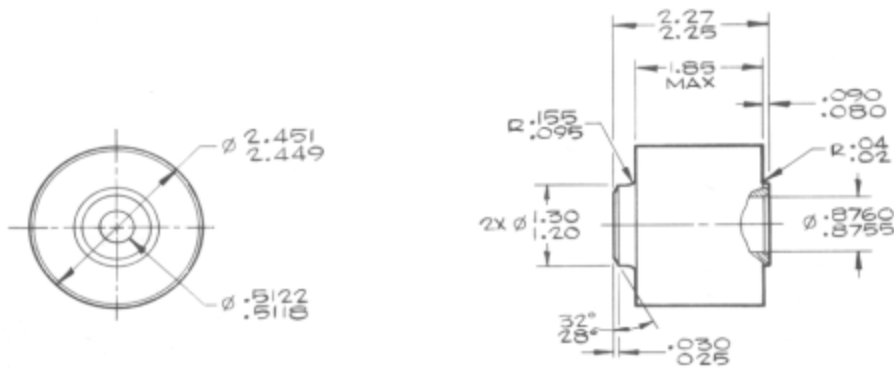
OUTLINE DETAILS



STATOR ASSEMBLY



ELECTRICAL DIAGRAM



ROTOR ASSEMBLY