



GAI-TRONICS® CORPORATION
A HUBBELL COMPANY

7245-004 Indoor Remote Subset Amplifier Enclosure

General Information

This data sheet applies to the GAI-Tronics 7245-004 Indoor Remote Subset Amplifier Enclosure.

This enclosure is intended for use in GAI-Tronics Page/Party® and SmartSeries systems. This enclosure enables the amplifier, speaker, and field cabling of subset stations to be remotely mounted. It is constructed of fabricated steel and is equipped with a 24-position remote subset connector.

For proper operation, the 7245-004 Amplifier Enclosure must be installed with a subset and amplifier from the following list:

Subsets:

- 726-101 Single Party Desktop Subset
- 7265-101 Multi-Party Desktop Subset
- 711-102 Single Party Desk-Edge Subset
- 7115-102 Multi-Party Desk-Edge Subset
- 716-102 Single Party Flush-Mount Subset
- 7165-102 Multi-Party Flush-Mount Subset

Amplifiers:

- 723-001 Remote Subset Amplifier
- 723-901 SmartSeries Remote Subset Amplifier

The amplifier enclosure must be mounted within 8 feet of the subset due to the subset cable limitations. In addition, the amplifier enclosure must be mounted at an indoor location - the amplifier enclosure is not designed for outdoor use.

In order to provide SmartSeries features, the amplifier enclosure must be connected to a 723-901 Remote SmartSeries Subset Amplifier. The SmartVolume™ feature is not supported for the 7265-101 or the 726-101 Subset and 723-801 SmartSeries Remote Subset Amplifier combinations. Also, the SmartVolume™ feature is not supported for multiple speaker applications.

The 723-901 Remote Subset Amplifier is designed only for use with the magnetic hookswitch subsets listed in the System Requirements section of this manual. Subsets containing an RF hookswitch are not supported.

In order to provide Page/Party® features, the amplifier enclosure must be connected to a 723-001 Remote Subset Amplifier or the 723-901 Remote Subset Amplifier.

Specifications

Mechanical

Construction/finish.....16-gauge cold-rolled steel/textured gray polyurethane

Mounting..... Wall or column, four 0.312-inch (7.92 mm) diameter mounting holes

Connections Internal screw-type barrier terminal blocks;
24-pin subset connector

Dimensions 8.1 H × 8.1 W × 5.1 D inches (206 × 206 × 129 mm)

Shipping weight 6.0 lbs. (2.7 kg)

Net weight..... 5.1 lbs. (2.3 kg)

Environmental

Temperature range -22° F to +158° F (-30° C to +70° C)

Relative humidity Non-condensing 85% maximum

Indoor environmental rating Meets the requirements of IP20

Approvals

ApprovalNRTL certified for use in US and Canada..... Class I, Div. 2, Groups A, B, C, D

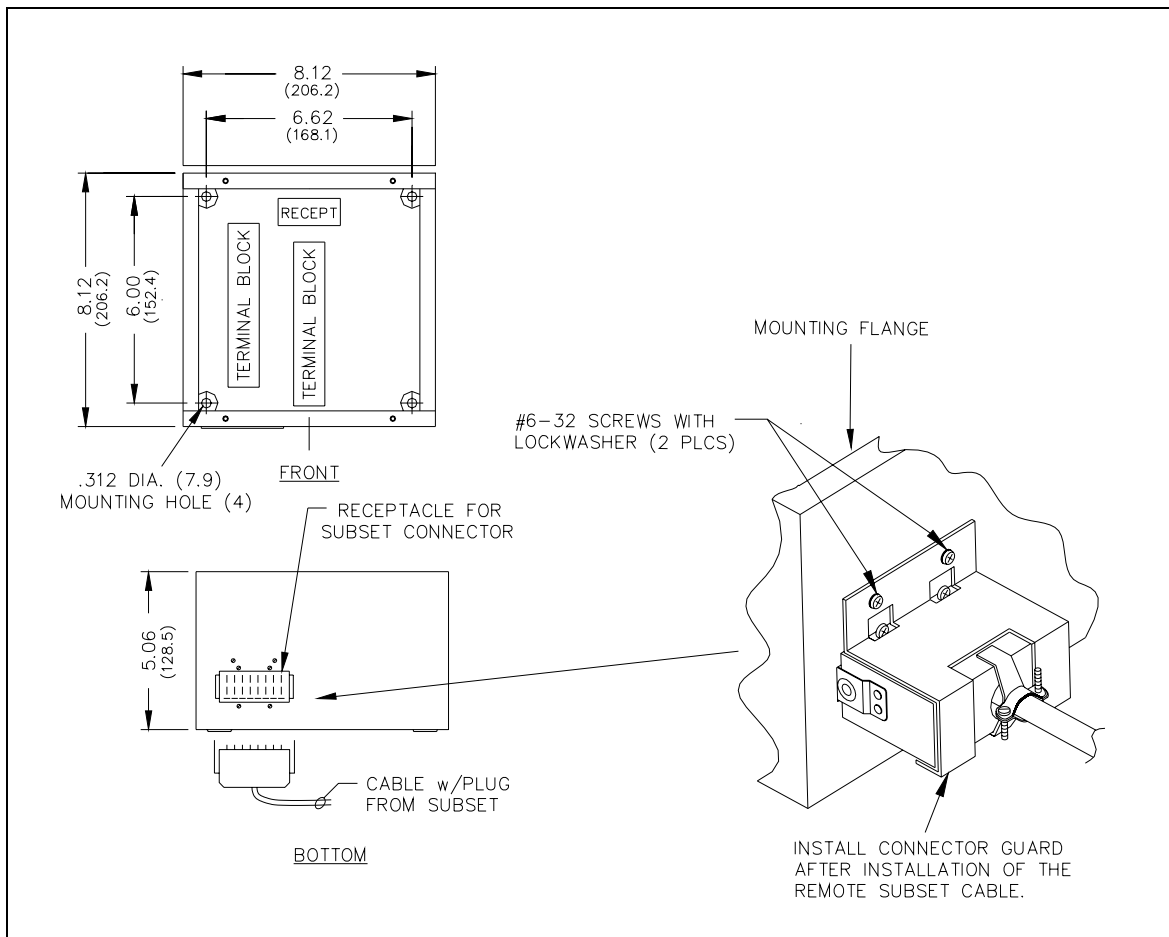


Figure 1. 7245-004 Indoor Remote Subset Amplifier Enclosure Mounting Details