

PRODUCT INTRODUCTION

MP1775A

Pulse Pattern Generator

MEASUREMENT SOLUTIONS

ANRITSU CORPORATION

Copyright © 2002 by ANRITSU CORPORATION

The contents of this manual shall not be disclosed in any way or reproduced in any media without the express written permission of Anritsu Corporation.

MP1775A Pulse Pattern Generator MX177601A SDH/SONET Pattern Editing Software

(4-Channel 12.5 Gbit/s PPG + SDH/SONET Pattern Editing Software)

Product Introduction

Anritsu
Discover What's Possible™

1

Appearance of MP1775A

MP1775A Pulse Pattern Generator



Anritsu
Discover What's Possible™

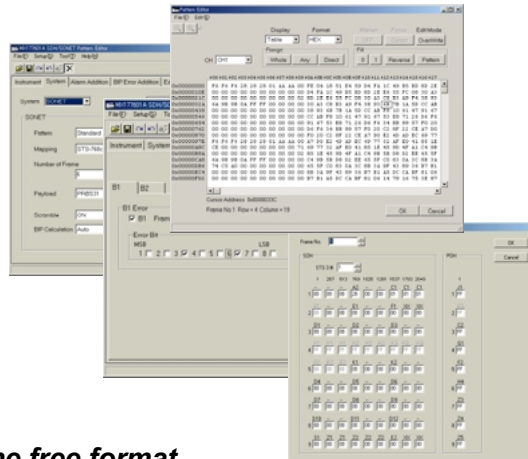
2

1

MX177601A SDH/SONET Pattern Editing Software SDH/SONET Pattern Editor

Features

- The OC-768 SDH/SONET frame is easily edited on a PC.
- B1 and B2 calculation is automatically performed.
- OH is edited.
- Alarm is added.
- A CID pattern is generated.
- A user pattern is edited in the free format.



Anritsu
Discover What's Possible™

3

Features of MP1775A Pulse Pattern Generator (1)

- **Pulse pattern generator that supports 40 Gbit/s SONET/SDH**
Contains a 32-megabit pattern memory for four channels (8 megabits per channel). Up to six 40 Gbit/s SONET/SDH OC-768/STM-256 frames can be held.
- **Four 12.5 Gbit/s output channels**
This four-channel pulse pattern generator optimally uses the expertise incorporated in reputable 12.5 Gbit/s pulse pattern generators. Independent program patterns can be set for each channel, and a PRBS of up to $2^{31} - 1$ bits long is supported.

Anritsu
Discover What's Possible™

4

Features of MP1775A Pulse Pattern Generator (2)

- *Four data output systems and two clock output systems*

Contains four data output systems and two clock output terminal systems, each with a maximum amplitude of 2.0 Vp-p.

- *Linkage with MP1801A 43.5G Multiplexer supporting 40 Gbit/s.*

A 40 Gbit/s program pattern and PRBS can be generated based on four data output systems in combination with the MP1801A.

- *Pattern editing using a PC*

MX177601A Pattern Editing Software (sold separately) enables GUI-based pattern setting using a PC.

Anritsu
Discover What's Possible™

5

ME7760A 43.5 Gbit/s Error Rate Measuring Instrument

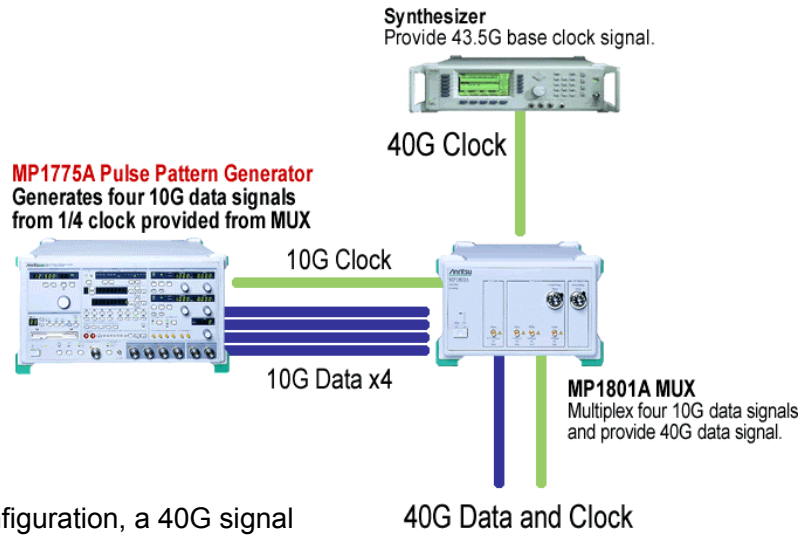


- *The MP1775A can be combined with other 40 Gbit/s measuring instruments to configure a 40G measurement solution product called the ME7760A 43.5 Gbit/s Error Rate Measuring Instrument.*
- *The MP1775A can also be combined with the MP9861A E/O to generate 40 Gbit/s optical signals.*

Anritsu
Discover What's Possible™

6

ME7760A 43.5 Gbit/s BERT System (Transmission)



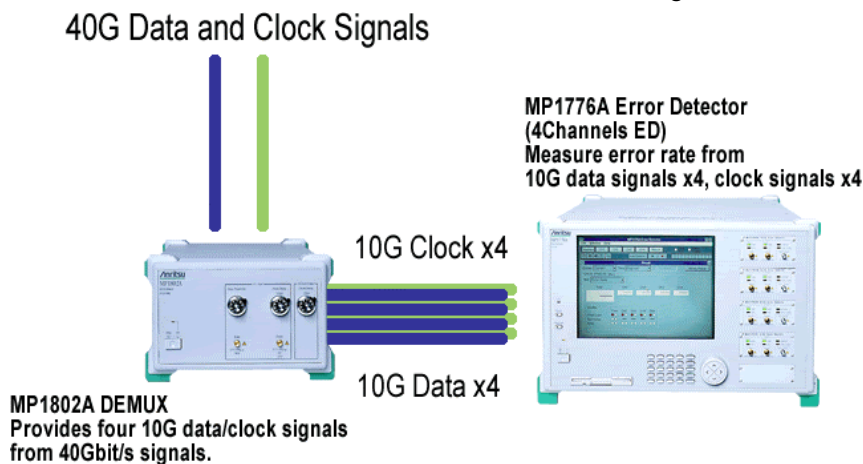
In this configuration, a 40G signal can be generated.

Anritsu
Discover What's Possible™

7

ME7750A 43.5 Gbit/s BERT System (Reception)

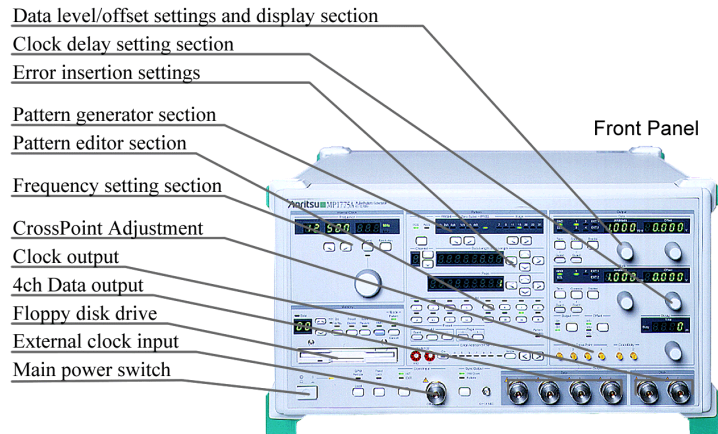
In this configuration, the error rate for a 40G signal can be evaluated.



Anritsu
Discover What's Possible™

8

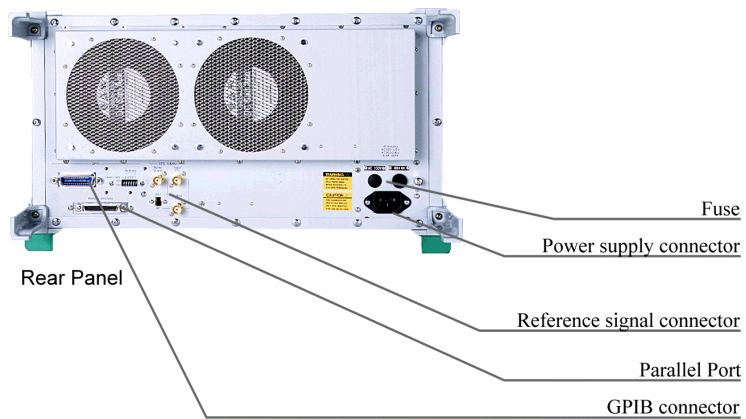
MP1775A Front Panel



The user interface uses dials and buttons to ensure intuitive operation.



MP1775A Rear Panel



The rear side has GPIB and printer terminals and reference signal terminals for an external synthesizer.



MX177601A Pattern Editing Software (1)

A GUI-based 40 Gbit/s SONET/SDH pattern editing function is provided.

- *A pattern that conforms to the ITU-T G.707/Bellcore standard can be edited.*

A pattern of up to six OC-768/STM-256 frames can be edited.

- *Sophisticated operation*

A function that uses the familiar Windows GUIs to edit patterns is provided. Generated patterns are transferred to a GPIB-connected MP1775A for use.

MX177601A Pattern Editing Software (2)

- *MX177601A can be used on three types of measuring instruments.*

MX177601A can also be combined with the MP1775A Pulse Pattern Generator (4-channel PPG for SONET/SDH), the MP1758A Pulse Pattern Generator, and the MP1776A Error Detector.

Anritsu

Specifications are subject to change without notice.

ANRITSU CORPORATION MEASUREMENT SOLUTIONS

5-10-27, Minamiazabu, Minato-ku, Tokyo 106-8570, Japan
Phone: +81-3-3446-1111
Telex: J34372
Fax: +81-3-3442-0235

● U.S.A. ANRITSU COMPANY

North American Region Headquarters
1155 East Collins Blvd., Richardson, Tx 75081, U.S.A.
Toll Free: 1-800-ANRITSU (267-4878)
Phone: +1-972-644-1777
Fax: +1-972-671-1877

● Canada ANRITSU ELECTRONICS LTD.

Unit 102, 215 Stafford Road West
Nepean, Ontario K2H 9C1, Canada
Phone: +1-613-828-4090
Fax: +1-613-828-5400

● Brasil ANRITSU ELETRÔNICA LTDA.

Praia de Botafogo 440, Sala 2401 CEP 22250-040,
Rio de Janeiro, RJ, Brasil
Phone: +55-21-5276922
Fax: +55-21-537-1456

● U.K.
ANRITSU LTD.
200 Capability Green, Luton, Bedfordshire LU1 3LU, U.K.
Phone: +44-1582-433200
Fax: +44-1582-731303

● Germany
ANRITSU GmbH
Grafenberger Allee 54-56, 40237 Düsseldorf, Germany
Phone: +49-211-96855-0
Fax: +49-211-96855-55

● France
ANRITSU S.A.
9, Avenue du Québec Z.A. de Courtabœuf 91951 Les
Ulis Cédex, France
Phone: +33-1-60-92-15-50
Fax: +33-1-64-46-10-65

● Italy
ANRITSU S.p.A.
Via Elio Vittorini, 129, 00144 Roma EUR, Italy
Phone: +39-06-509-9711
Fax: +39-06-502-24-25

● Sweden
ANRITSU AB
Botvid Center, Fittja Backe 1-3 145 84 Stockholm,
Sweden
Phone: +46-853470700
Fax: +46-853470730

● Spain
ANRITSU ELECTRÓNICA, S.A.
Europa Empresarial Edificio Londres, Planta 1, Oficina
6 C/ Playa de Lienres, 2 28230 Las Rozas. Madrid,
Spain
Phone: +34-91-6404460
Fax: +34-91-6404461

● Singapore
ANRITSU PTE LTD.
10, Hoe Chiang Road #07-01/02, Keppel Towers,
Singapore 089315
Phone: +65-6282-2400
Fax: +65-6282-2533

● Hong Kong
ANRITSU COMPANY LTD.
Suite 719, 7/F., Chinachem Golden Plaza, 77 Mody
Road, Tsimshatsui East, Kowloon, Hong Kong, China
Phone: +852-2301-4980
Fax: +852-2301-3545

● Korea
ANRITSU CORPORATION
14F Hyun Juk Bldg. 832-41, Yeoksam-dong,
Kangnam-ku, Seoul, Korea
Phone: +82-2-553-6603
Fax: +82-2-553-6604-5

● Australia
ANRITSU PTY LTD.
Unit 3/170 Forster Road Mt. Waverley, Victoria, 3149,
Australia
Phone: +61-3-9558-8177
Fax: +61-3-9558-8255

● Taiwan
ANRITSU COMPANY INC.
6F, 96, Sec. 3, Chien Kou North Rd. Taipei, Taiwan
Phone: +886-2-2515-6050
Fax: +886-2-2509-5519