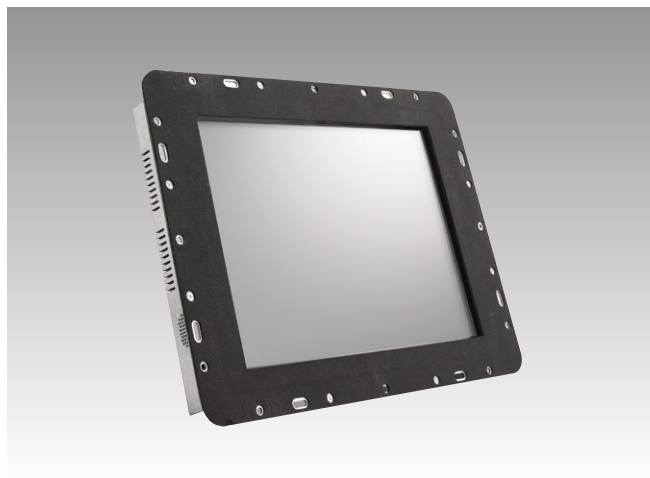


# ES-3115

## 15" Industrial LCD Monitor



### Features

- 15" LCD supports 1024 x 768 pixels
- Multiple touchscreen options for different applications
- Versatile mounting brackets
- Open-frame architecture with Embedded LCD touch panel
- Supports full-function OSD control keys to optimize the display
- Sunlight readable option
- Ultra-high brightness up to 1000 nit option

### Introduction

The Advantech ES-3115 Industrial Open Frame 15" Monitor is equipped with a Resistive, Capacitive, SAW or Infrared touchscreen, mainly for self-service kiosk applications. The strengthened steel mechanical enclosure and optional tempered or vandal proof glass enables the ES-3115 to withstand harsh environments.

### Specifications

- **I/O Ports** 15-pin D-Sub, DC power input, RS-232 port, Power switch
- **Display Input Signal** Analog RGB, 0.7 VP-P/75 Ohm
- **Multi-Scan Mode** Supports VGA/SVGA/XGA
- **Refresh Rates** FH: 30 ~ 60 KHz, FV: 56 ~ 75 Hz
- **OSD Control** Key : Provide auto-tune/menu/decrease/increase  
Function: Supports Brightness/Contrast/Clock/Phase/Horizontal Position/Vertical Position/Sharpness
- **Power** External 45 W power adaptor, with AC 100 ~ 240 V @ 1.2 A input and DC +12 V @ 3.75 A output
- **Dimensions (W x H x D)** 414 x 322.2 x 50 mm
- **Weight** 4.1 kg

#### Environment

- **Operating Temperature** -0 ~ 50° C (32 ~ 122° F)
- **Storage Temperature** -20 ~ 60° C (-4 ~ 140° F) for standard LCDs
- **Humidity** 5 ~ 95% @ 40° C, non-condensing
- **Shock** 10 G peak acceleration (11 ms duration)
- **EMC Approved** CE, FCC
- **Safety Approved** UL

### Display

**NEW**

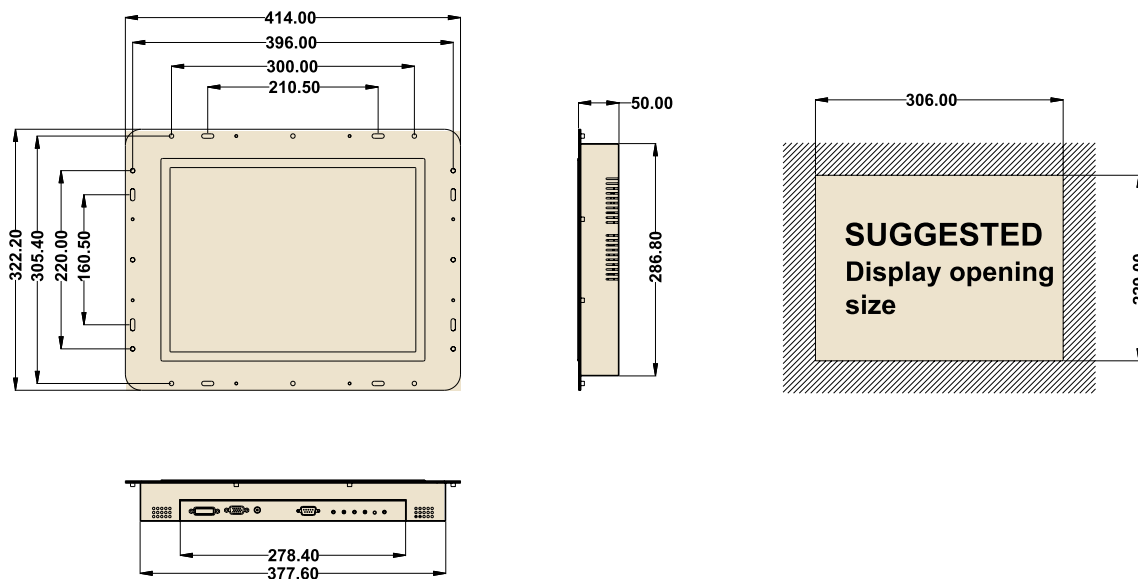
Feature	Standard / (OEM)	Sunlight Readable
Size	15"	15"
Resolution (pixels)	1024 x 768 XGA	1024 x 768 XGA
Number of Colors	262K	262K
Viewing Angle (L/R/U/D)	60°/60°/40°/60°	70°/70°/70°/50°
Brightness (nit)	350	350
Contrast Ratio	500:1	500:1
Response Time (ms)	12	12
Lamp Life (hrs)	50,000	50,000
Long-term Support	Yes	Yes
Anti-reflection	N/A	Yes

### Touchscreen

Type	Analog Resistive	Capacitive	SAW	Infrared
Thickness	3.48 mm	3.18 mm	2.7 mm	3.0 mm
Resolution	4096 x 4096	1024 x 1024	4096 x 4096	4096 x 4096
Light Transmission	80%	85%	92%	92%
Controller Interface	RS-232/USB	RS-232	RS-232/USB	RS-232/USB
Power Consumption	+5 V @ 200 mA	+5 V @ 100 mA	+5 V @ 75 mA	+5 V @ 150 mA
Touch Lifetime	35 million hrs	225 million hrs	50 million hrs	MTBF 100,000 hrs
Driver OS Support	DOS, Linux, Mac, Windows 95/98/NT/ME/CE/2000/XP			

## Dimensions

Unit: mm



## Ordering Information

Part No.	Type	Brightness (nit)	Interface	Touchscreen	Touch Interface	Transflective
ES-3115G-VXAE	Open Frame	350	VGA	Tempered Glass	N/A	N/A
ES-3115R-VXAE	Open Frame	350	VGA	5 wire Resistive	RS232/USB	N/A
ES-3115C-VXAE	Open Frame	350	VGA	Capacitive	RS232	N/A
ES-3115S-VXAE	Open Frame	350	VGA	SAW	RS232/USB	N/A
ES-3115V-VXAE	Open Frame	350	VGA	Infrared	RS232/USB	N/A
ES-3115V-VXA-SRE	Open Frame	550	VGA	Infrared	RS234/USB	Yes

### Notes

- (1) Capacitive, SAW and Infrared touch panels are recommended for use with sunlight readable outdoor solutions.
- (2) The above list shows major part numbers for your reference. Please refer to the Advantech Display Solutions Selection Wizard (<http://www.advantech.com.tw/ePlatform/DS/dsw.aspx>) or CTOS to find part numbers and order your desired combination of LCD, touchscreen and signal interface.
- (3) Please use Display Solutions DTOS for special requirements.