

ACE-903A

+5V 30W Embedded ATX Power Supply



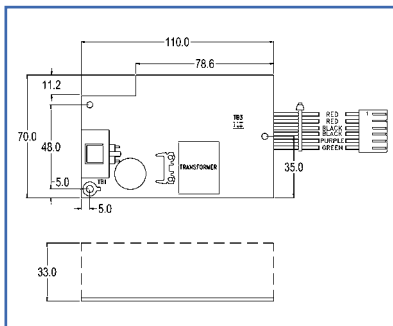
SPECIFICATIONS

- ◆ Input Voltage : 90V~264V AC
- ◆ Input Frequency : 47Hz~63Hz
- ◆ Output Rating : +5V Rated load : 6A , +5Vsb Rated load : 0.3A
- ◆ Ripple and Noise : Less than 1% of each output at rated load
- ◆ Load Regulation : +5V , +5Vsb is less than +/- 1%
- ◆ Hold-up time : 20ms min
- ◆ Efficiency : 70%
- ◆ Protection : Over voltage/Load protection and short circuit protection
- ◆ Altitude : 0~10,000 ft
- ◆ TTL signal compatible power good signal
- ◆ MTBF: 207,606hrs at 25°C
- ◆ Vibration : 10-55Hz at 2G , 3min period , 30min along X,Y and Z axis
- ◆ Shock : 10G for 11ms once on each X,Y and Z axis
- ◆ Safety : Meets UL 60950 , CSA 22.2 NO.234 , VDE EN 60950
- ◆ EMI : Meets FCC docket 20780 curve "B" , EN 55022 class "B"
- ◆ EMC : Meets EN 61000-4-2 8KV air discharge criterion A
EN 61000-4-3 3V/M criterion A
EN 61000-4-4 2KV criterion A
EN 61000-4-5 2KV criterion A
- ◆ Operating temperature : 0~50°C
- ◆ Storage temperature : -40~85°C

Pin Define

PIN	Cable
1	+5V
2	+5V
3	GND
4	GND
5	+5Vsb
6	PS ON

Dimensions



ORDERING INFORMATION

- ACE-903A +5V 30W Embedded ATX Power Supply

ACE-906V

12VDC to 5VDC 60W Power Supply



SPECIFICATIONS

- ◆ Input Voltage : 9.6V~14.4V DC
- ◆ Output Rating : +5V MAX : 12A
- ◆ Ripple and Noise : 30mV
- ◆ Load Regulation : +5V less than +/- 2%
- ◆ Efficiency : 80%
- ◆ Altitude : 0~12,000 ft
- ◆ TTL signal compatible power good signal
- ◆ MTBF:100,000hrs at 25°C
- ◆ Protection : Over voltage/Load protection and short circuit protection
- ◆ Vibration : 10-55Hz at 2G , 3min period , 30min along X,Y and Z axis
- ◆ Shock : 10G for 11ms once on each X,Y and Z axis
- ◆ Safety : Meets EN 60950 , IEC 950
- ◆ EMI : Meets FCC , Part 15 , Class "B" , CISPR 22 Class "B"
- ◆ EMC : Meets EN 61000-4-2 8KV air discharge criterion B
EN 61000-4-4 2KV criterion B
EN 61000-4-5 2KV criterion B
- ◆ Operating temperature : 0~50°C
- ◆ Storage temperature : -40~85°C
- ◆ Dimensions : 64(W)x20(H)x92.8(D)mm

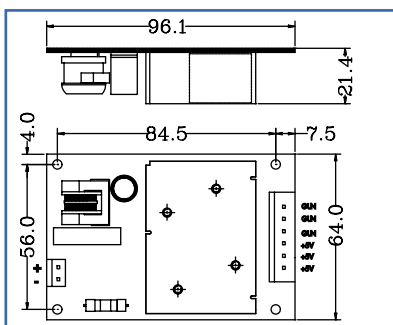
FEATURES

- ◆ High efficiency over 80%
- ◆ Low Ripple & Noise
- ◆ Output over voltage protection
- ◆ Short circuit protection on all outputs

Pin Define

PIN	TB1	TB2
1	E	GND
2	+	GND
3	-	GND
4		+5V
5		+5V
6		+5V

Dimensions



ORDERING INFORMATION

- ACE-906V 12VDC to 5VDC Input 60W Power Supply