

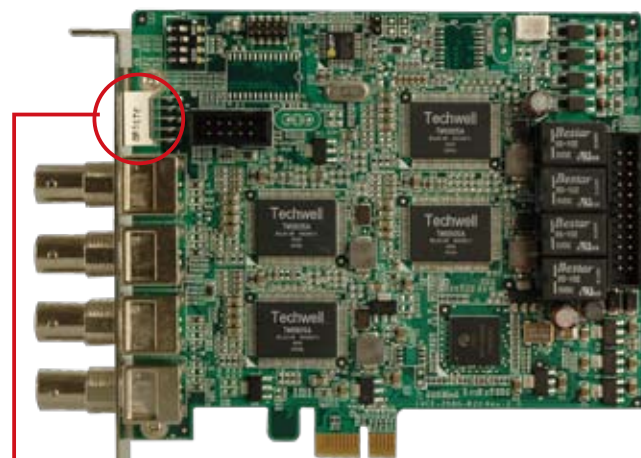
IVCE-268G PCI Express Video/Audio Capture Card with Four Video Input Channels, Total 120 fps@720x480(NTSC), and One Audio Input Channel



Low Power

Features

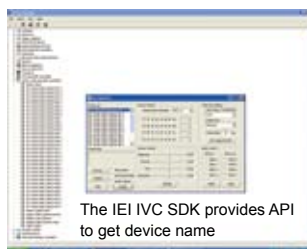
- PCIe x1 high speed interface
- Ultra low power consumption, only 12 W for 30 fps @ D1 per channel
- No thermal issues, no heat sink required
- Best Video quality with 10-bit ADC and 4H composite for NTSC / PAL / SECAM auto sensing
- 10-bit ADC for Analog Sound digitizing for better audio quality
- Eight GPIO relay channels (4 in / 4 out) on board, included I/O kit & cable
- Support Multiple Card (maximum 32 ports video input and 32 ports audio input)
- Windows® 2000, XP and Linux kernel 2.6 drivers
- Bundle IEI Argus surveillance software supports 100/120fps@4 channel video/audio monitoring and recording
- Applications: Video surveillance, security, public transportations, police and government



The ID is programmed by a 4-digit DIP switch



Digit LED to show its ID (identification)



The IEI IVC SDK provides API to get device name



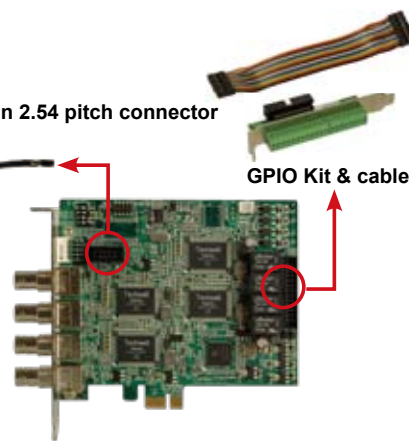
IEI ARGUS Digital Video Surveillance Software

Input kit

2x5-pin 2.54 pitch connector



Four 3.5 mm audio jacks



GPIO Kit & cable

Specifications

Interface

Video Input	4 channels composite video NTSC, PAL and SECAM auto sensing
Connector	BNC
Audio Input	4 channels analog audio
Connector	Audio kit with 3.5 mm audio jack connector
PCI Interface	PCIe x1
Card ID	Selectable with LED for ID indication
Alarm I/O	GPIO daughter board with 4 inputs and 4 outputs

Software support

Device Driver	Windows® 2000, XP Linux kernel 2.6
SDK	Provide SDK and demo program with sample source code in C++
Surveillance software support	Software supports 100/120fps@4 channel video/audio monitoring and recording

Video Processing

Video engine	4 x Techwell TW6805	
Resolution	NTSC:	PAL / SECAM:
	720 x 480	720 x 576 640 x 480
	720 x 240	720 x 480 640 x 240
	640 x 480	720 x 288 352 x 288
	640 x 240	720 x 240 320 x 240
	320 x 240	704 x 576 176 x 144
Frame rate	NTSC: Four video channels with 120 fps @ D1 per channel	
	PAL and SECAM: Four video channels with 100 fps @ D1 per channel	

Multiple Card Support

Card	Video Port	Audio Port	Support max. Channel / Resolution	Total Frame (NTSC/PAL)
1	4	4	4 channels, D1 (720 x 480)	120/100 fps
4	16	16	16 channels, D1 (720 x 480)	480/400 fps
8	32	32	32 channels, QVGA (320 x 240)	960/800 fps

System Requirement

System	x86 compatible computer
Graphic	DirectX compatible VGA card supporting YUV overlay mode

Others

Dimensions	119.91 mm x 106.68 mm
Operation temperature	0°C~60°C (32°F~140°F), non-condensing
Power consumption	12W, 1A@12V (with relay)

Packing List

1 x IVCE-268G	1 x GPIO kit
1 x GPIO cable	1 x audio input kit
1 x utility CD	1 x QIG
1 x IEI Argus Surveillance software CD	

Ordering Information

Part No.	Description
IVCE-268G-R20	PCI Express video/audio capture card with four video input channels, total 120 fps@720x480(NTSC), and one audio input channel