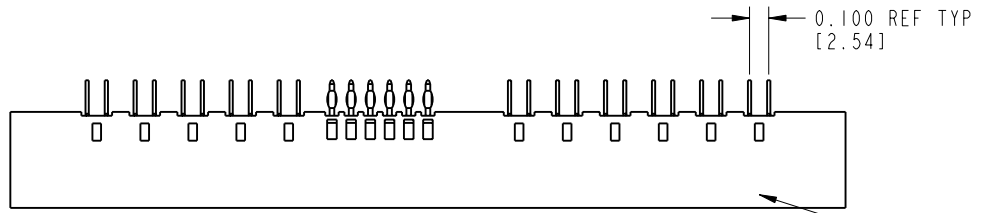


Tous droits strictement réservés. Reproduction ou communication o des liens interdité sous quelque forme que ce soit sans autorisation écrite du propriétaire. Propriété de c FCI. Droits de reproduction FCI.

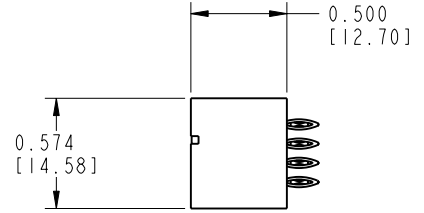
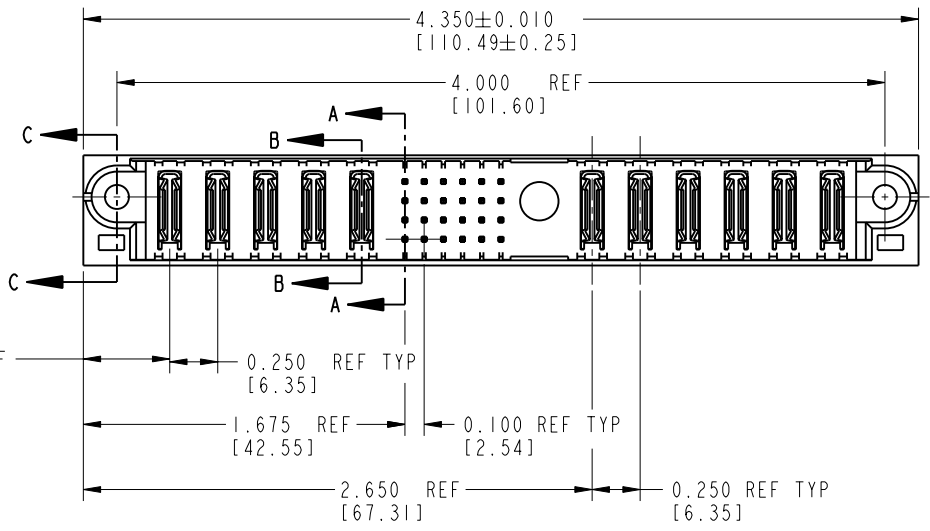
FCI

All rights strictly reserved. Reproduction or issue to third parties in any form whenever is not permitted without written authority from the proprietor. Property of FCI. Copyright FCI.

PRODUCT No.	ROWS	POWER					SIGNAL						POWER								
		E1	P1	P2	P3	P4	P5	1	2	3	4	5	6	M1	P6	P7	P8	P9	P10	P11	E2
51860-002-- NOTE: 3	D C B A		PC	PC	PC	PC	PC	G	G	G	G	G	G	G	PC	PC	PC	PC	PC	PC	



NOTE 3



CODE	DIM "M" ±.010 [0.25]	CONTACT TYPE
G	0.270 [6.86]	SIGNAL
K	0.220 [5.59]	SIGNAL
PC	N/A [N/A]	POWER

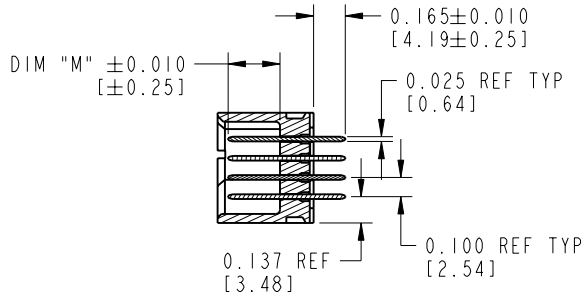
mat'l code				SEE NOTE 1		tolerances unless otherwise specified		CUSTOMER		FCI www.fciconnect.com	
ltr	ecn no.	dr	date	linear	.XX±.01/0.X±0.3		COPY		title 5P + 24S + 1M + 6P		
A	V12513	DAI	10/31/01		.XXX±.005/0.XX±0.13		projection		VERTICAL PRESS-FIT HEADER		
B	V21104	TAB	09/30/02		.XXX±.0020/0.XXX±0.051		INCH/MM		product family PWRBLADE		code 213
C	DG05-0572	JMG	01/05/06	angles	0°±2°		scale 1:1		size A		sheet 1 of 3
sheet index		revision sheet		C	C	C					
		1 2 3									

Tous droits strictement réservés. Reproduction ou communication o des liers interdite sous quelque forme que ce soit sans autorisation écrite du propriétaire. Propriete de c FCI. Droits de reproduction FCI.

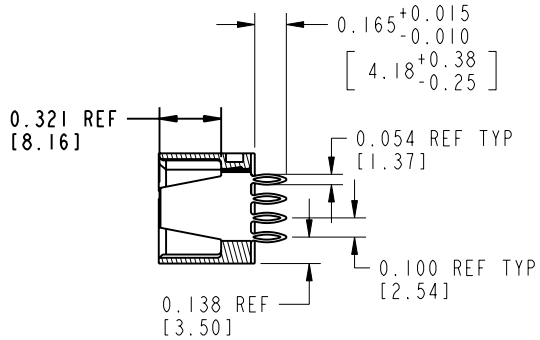
All rights strictly reserved. Reproduction or issue to third parties in any form, whatever is not permitted without written authority from the proprietor. Property of FCI. Copyright FCI.

PRODUCT NUMBER

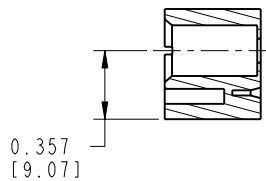
51860-002--
NOTE: 2



SECTION A-A



SECTION B-B



SECTION C-C

CONNECTOR NOTES:

- HOUSING MATERIAL: UL 94 V-0 GLASS FILLED HIGH TEMP THERMOPLASTIC
POWER CONTACT MATERIAL: COPPER ALLOY
SIGNAL CONTACT MATERIAL: COPPER ALLOY
 - 51860-002;51860-002LF;51860-002GLF PLATING SPEC. SEE PRINT:10064183
 - "MANUFACTURER'S" NAME, P/N, AND DATE CODE TO APPEAR ON THIS SURFACE
 - PRODUCT SPECIFICATION GS-12-149
- PCB NOTES:
- ALL DIMENSIONS ARE BASIC UNLESS OTHERWISE SPECIFIED.
 - ALL THROUGH HOLES ARE LOCATED WITH A TRUE POSITION OF 0.004 [0.10]
 - ALL HOLE DIAMETERS ARE FINISHED HOLE SIZE
 - Ø0.098[2.41] THROUGH HOLES ARE UNPLATED.
 - Ø0.0453±0.0010 [1.151±0.025] DRILLED HOLES PLATED WITH 0.0003 [0.008] MIN SnPb OVER 0.001 [0.03] TO 0.003 [0.08] Cu PLATING TO ACHIEVE A Ø0.040±0.003 [1.02±0.07] HOLE.
 - FOR PRESS FIT APPLICATION USE FCI CAM TOOL 430169-XXX.
 - DIMENSIONS AND TOLERANCES ARE IN ACCORDANCE WITH ASME Y14.5M, 1994 UNLESS OTHERWISE SPECIFIED.

mat'l code				SEE NOTE 1		tolerances unless otherwise specified		CUSTOMER		 www.fciconnect.com	
lfr	ecn no.	dr	date	linear	.XX±.01/0.X±0.3		COPY		 projection	title	
c					.XXX±.005/0.XX±0.13		 INCH/MM			5P + 24S + 1M + 6P	
				angles	.XXX±.0020/0.XXX±0.051		 scale		VERTICAL PRESS-FIT HEADER		sheet
					dr	J. WITMER	10/3/01	1:1		product family	
				engr	J. ALLISON	10/3/01			PWRBLADE		2
				chr	J. ALLISON	10/3/01			size		
				appd	J. ALLISON	10/3/01			dwg no		A
sheet index	revision sheet								A		

cage code 22526

Pro/E

PDM: Rev:C

STATUS:Released

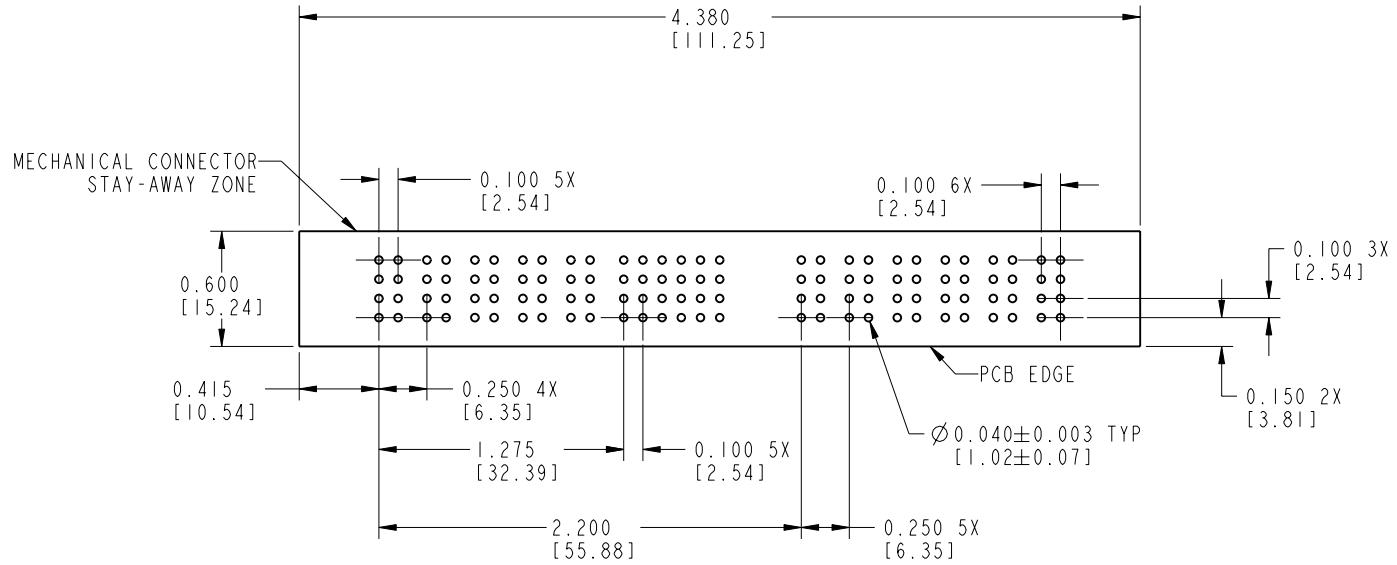
Printed: Jan 06, 2006

Tous droits strictement réservés. Reproduction ou communication o des liers interdite sous quelque forme que ce soit sans autorisation écrite du propriétaire. Propriété de c FCI. Droits de reproduction FCI.


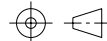
All rights strictly reserved. Reproduction or issue to third parties in any form whatever is not permitted without written authority from the proprietor. Property of FCI. Copyright FCI.

PRODUCT NUMBER

51860-002--
NOTE: 3



RECOMMENDED PCB LAYOUT

mat'l code		SEE NOTE 1		tolerances unless otherwise specified		CUSTOMER		 FCI www.fciconnect.com	
lfr	ecn no.	dr	date	linear	.XX±.01/0.X±0.3	COPY			
c				linear	.XXX±.005/0.XX±0.13	projection		title 5P + 24S + 1M + 6P	
				angles	.XXX±.0020/0.XXX±0.051			VERTICAL PRESS-FIT HEADER	
				dr	J. WITMER 10/3/01	INCH/MM		product family PWRBLADE	
				enrg	J. ALLISON 10/3/01	scale		code 213	
				chr	J. ALLISON 10/3/01	1:1		size	
				appd	J. ALLISON 10/3/01			dwg no	
sheet index		revision sheet						A 51860-002	
								sheet 3	

coge code 22526

Pro/E

PDM: Rev:C

STATUS:Released

Printed: Jan 06, 2006