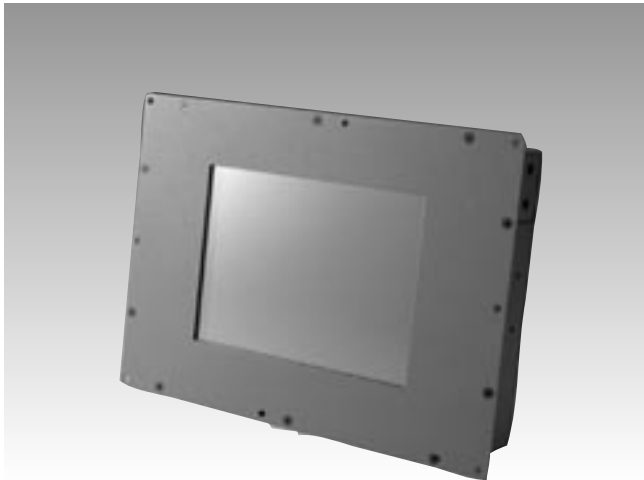


# SPC-57C

## 5.7" STN Smart Panel Computer with Intel XScale® CPU and Windows® CE .NET



### Features

- Intel XScale® PXA255 200 MHz CPU and Microsoft Windows® CE .NET OS
- 5.7" color STN LCD panel and resistive touch screen
- Ultra low power consumption and fanless
- Compact size
- IP65 front bezel
- Can operate without back cover/removable back cover for user
- Open-frame model: ideal design for inside-out mounting type

### Introduction

The SPC-57C integrates the Intel XScale PXA255 200 MHz processor and Windows CE .NET 4.2 or Embedded Linux (Embedded Linux will support by project based). It is designed to provide customers with a low power, high performance embedded display platform with good networking and graphic performance. SPC-57C has a bright QVGA (320 x 240) LCD screen and comes without front bezel for inside-out mounting, making it ideal for customers to design their own chassis or housing.

### Specifications

#### System Kernel

- **CPU** Intel PXA255 200 MHz on board
- **OS** Windows CE .NET 4.2 professional plus
- **SDRAM** 64 MB SDRAM on board
- **Flash** 32 MB Flash memory on board
- **WDT** PXA255 internal
- **Boot Loader** 1 MB AMD Flash ROM for boot loader
- **RTC** HT1381

#### Display

- **LCD** 5.7" color STN QVGA 320x 240
- **Touch Screen** 4 wire resistive touch screen
- **VGA Chip** PXA255 Internal

#### I/O

- **RS-232** 1 x full function transceiver level RS-232 by DB-9 connector,  
2x full function transceiver level RS-232 by pin-header inside the case
- **RS-485** 1 x RS-485 by DB-9 connector
- **RJ-45** 1 x 10/100Base-T RJ-45
- **USB** 2 x USB host; 1 x USB client
- **PCMCIA** 1 x PCMCIA slot type II
- **CF** 1 x CF slot type II
- **Digital I/O** 8 DI & 8 DO. Pin header output inside the case. Provide API to access DIO
- **GPIO** 8 GPIO. Pin header output inside the case. Default ishotkey
- **Audio** 1 x Audio line-out jack

#### Power

- **V-in Range** DC 10 V ~ 28 V
- **Protection** Power surge protection  
Electrical pole reversal protection
- **SM Bus** For smart battery, pin headers, I2C bus
- **System Backup Battery** Rechargeable Li-ion battery 65 mAh for RTC
- **Power Switch** 1 power switch
- **Power Conn** 3-pin power connector with screw hole
- **SW Reset** Execute S/W reset through system configuration
- **Power Consumption** 6 W (Typical power consumption w/ OS running and LCD backlight on)

#### Mechanical

- **Dimensions** Box size: 192.5 x 139 x 40.3mm  
Front bezel: 209.5 x 156mm
- **Material** SPCC

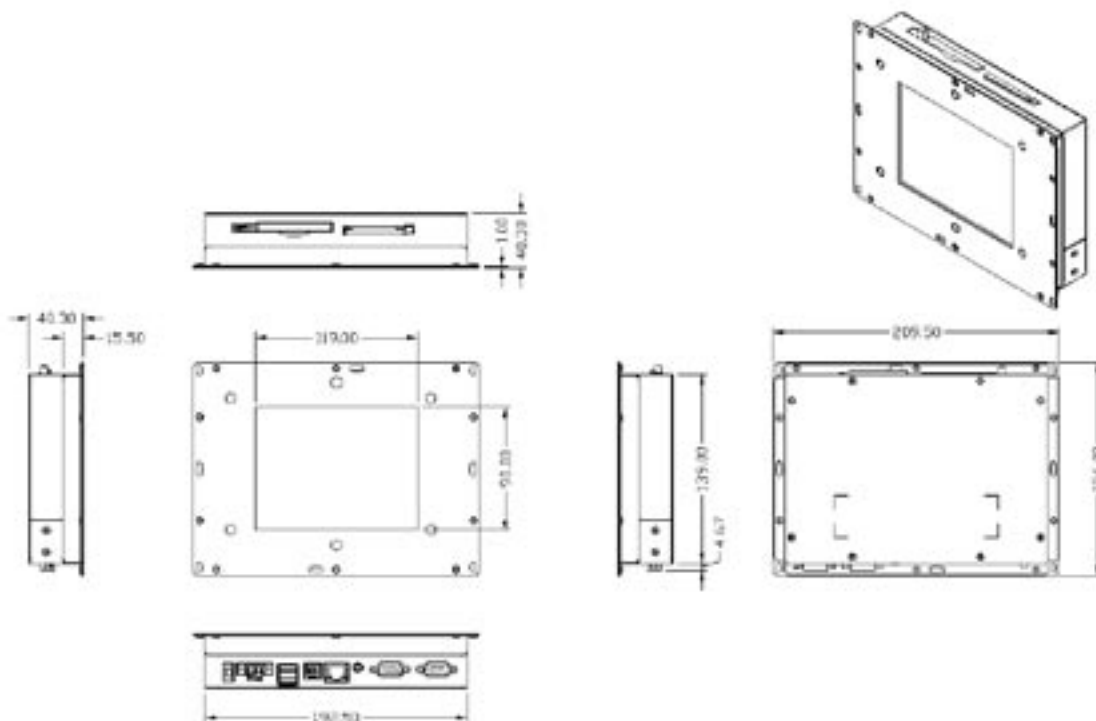
#### Environment

- **Operating Temp** 0 ~ 50° C
- **Storage Temp** -20 ~ 60° C
- **Water/Dust Resistance** IP65 front bezel
- **Certification** CE/FCC/UL

### Ordering information

- **SPC-57C-245CE1** Intel Xscale PXA255 200 MHz CPU, Windows CE .NET pre-installed with 5.7" color STN LCD and resistive touch screen SPC
- **SPC-POWERSET** 60 W power adapter with 3-pin power connector (Customer must purchase power cord separately)

## Dimensions



## Packing List

- Smart Panel Computer
- Windows CE .NET end user license agreement (Windows CE .NET version)
- CD-ROM
  - 1) Readme.txt
  - 2) User's manual
  - 3) Data Sheet
  - 4) Upgrade utility
  - 5) Microsoft ActiveSync Version 3.7 installation files (Windows CE .NET)
  - 6) Windows CE .NET 4.2 platforms SDK (Windows CE .NET)
- Warranty Card
- 1 x USB client ActiveSync cable
- 3-pin power connector with screw hole