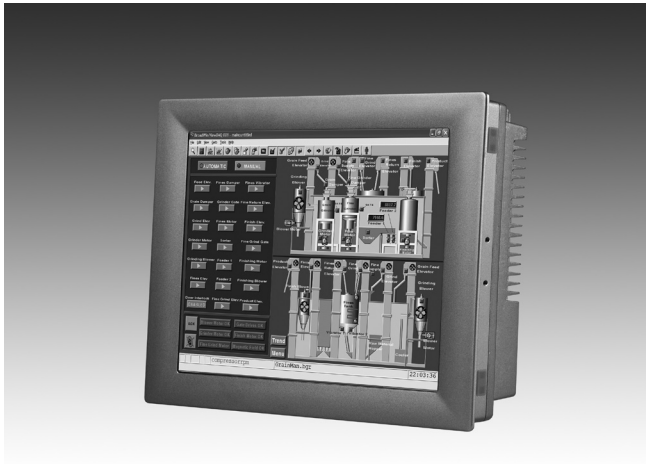


# WebView-1270

12.1" Web-enabled HMI



## Features

- 12.1" SVGA TFT LCD
- Super slim and compact design with Al-Mg housing
- NEMA4/IP65 compliant front panel
- Built-in Windows® CE with Advantech WinCE WebAccess
- Supports Vector-based graphics
- Supports 2 web clients
- Remote control and monitor through an ordinary IE browser
- 50 tags real time trend and historical trend
- Supports calendar scheduler
- Import BMP, JPEG, GIF, ACAD DXF

## Introduction

Advantech WebView-1270 is a web browser-based human-machine interfaces (HMI) and supervisory control and data acquisition (SCADA). All the features are available in an ordinary Web browser including Animated Graphics Displays, Real-time Data, Controllers, Trends, Alarms and Logs, Scheduler, and more.

## Specifications

### General

- **BIOS** Award® 4 MB
- **Certificate** BSMI, CCC, CE, FCC, UL
- **Cooling System** Fanless design
- **Dimensions (W x H x D)** 311 x 237 x 52.3 mm (12.24" x 9.33" x 2.06")
- **Enclosure** Al-Mg and ABS
- **Mounting** Desktop, Panel Mount or Wallmount
- **Power Consumption** 40 W
- **Power Input** 18 ~ 32 V<sub>DC</sub>
- **Weight (Net)** 3.3 kg (7.28 lb)

### System Hardware

- **CPU** Intel Celeron 1 GHz
- **Expansion Slots** 1 x CompactFlash® slot, 1 x PCI-104 slot
- **Graphics Controller** Intel 915 GME
- **Keyboard/Mouse Ports** 1 x PS/2
- **LAN** 2 x 10/100Base-T
- **Memory** 512 MB DDR2 SDRAM on board
- **Serial Ports** 3 x RS-232(COM1,2,3) and 1 x RS-232/485/422(COM4)
- **USB Ports** 4 x USB 2.0
- **Audio Ports** 1 x MIC-in, 1 x Line-out

### LCD Display

- **Backlight Life** 50,000 hrs
- **Contrast Ratio** 500:1
- **Display Size** 12.1"
- **Display Type** SVGA TFT LCD
- **Luminance cd/m<sup>2</sup>** 350
- **Max. Colors** 262 K
- **Max. Resolution** 800 x 600
- **Viewing Angle (H/V°)** 140/120

### Touchscreen

- **Lifespan** 1 million touches at single point
- **Light Transmission** Above 75%
- **Resolution** Linearity
- **Type** 8-wire, analog resistive

### Environment

- **Humidity** 10 ~ 95% RH @ 40° C, non-condensing
- **Ingress Protection** Front panel: NEMA4, IP65
- **Operating Temperature** 0 ~ 50° C (32 ~ 122° F)
- **Storage Temperature** -20 ~ 60° C (-4 ~ 140° F)
- **Vibration Protection** With HDD: 1 grms (5 ~ 500 Hz)  
(Operating, random vibration)

### Software Specifications

- **Operating System** Windows CE
- **Installed Advantech WinCE WebAccess with specification listed below:**
  - I/O Tag Number 150/600
  - Internal Tag Number 150/600
  - Web Client 2
  - Alarm Logging 1000
  - Action Logging 1000
  - Message Characters 50
- **Graphics**
  - Number of Graphic Pages 100
  - Macro Key Yes
  - Local Script Yes
  - Variable per Graphic Page 255
- **Data Trend Log**
  - Number of data logging 50 Tags
- **Recipe**
  - Recipes per Project 100
  - Unit per Recipe 100
  - Item per Unit 999
- **Scheduler**
  - Holiday Configuration group 10
  - Time Zone Group 99
  - Device Loop Group 99
  - Equipment Group 99

## Ordering Information

- **WVIEW1270-150-W50E** 12.1" Web-enabled HMI with WinCE WebAccess 150 tags
- **WVIEW1270-600-W50E** 12.1" Web-enabled HMI with WinCE WebAccess 600 tags