

Configuration Software

ConfigurationDesk

The SCALEXIO system's immense flexibility is fully supported and intensified by the new ConfigurationDesk® configuration software.

The configuration process involves three main tasks:

- Describing the connected devices
- Assigning I/O functions and hardware
- Connecting to the model

You can perform these tasks in any order and in a single tool, in an easy-to-read 3-column window.

ConfigurationDesk helps you select the I/O functions, assign hardware channels and generate code for the model. For an overview of all channel types available for the I/O functions, please see p. 4. You can create different views of each system to display only task-specific elements such as I/O functions.

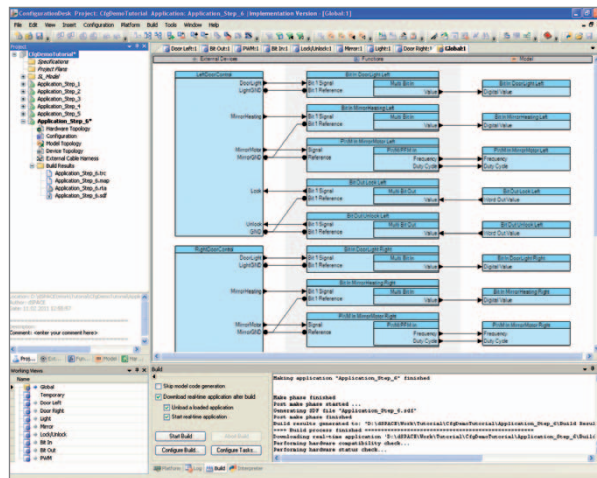
ConfigurationDesk also produces complete documentation of the system, especially the signal path between the ECU pins and the I/O model.

For more information on dSPACE ConfigurationDesk, please see page 32.

Other Software

You can also make use of the entire familiar dSPACE software world:

- ControlDesk® Next Generation for instrumentation
- AutomationDesk® for test creation and automation
- MotionDesk for visualization
- Automotive Simulation Models for real-time simulation models
- ModelDesk for graphical model parameterization
- RTI CAN MultiMessage Blockset for connecting to CAN communication networks
- RTI CAN MultiMessage Blockset for connecting to LIN communication networks
- dSPACE FlexRay Configuration Package for configuring the system in FlexRay communication networks



ConfigurationDesk, the configuration and implementation software for SCALEXIO hardware.