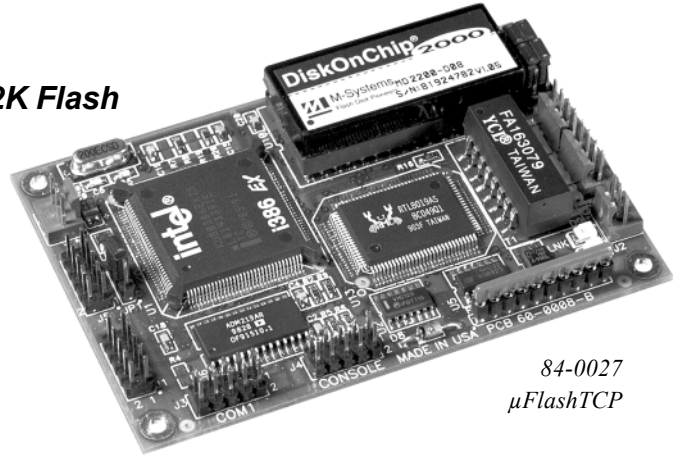


μ FlashTCP

- **TCP/IP & DOS with Flash File System**
- **10BASE-T Ethernet (NE2000 Compatible)**
- **32 Pin Dip Socket to accept 512K SRAM, 512K Flash or M-Systems DiskOnChip**
- **386 Ex, 25 MHz / 512K Flash, 512K SRAM**
- **10 Digital I/O Lines**
- **PC Compatible Serial Ports**
 - 1 - RS232
 - 1 - RS232 / RS485, Software Selectable
- **5V DC Power, 400mA nominal**
- **Dimensions 3.75" x 2.50"**



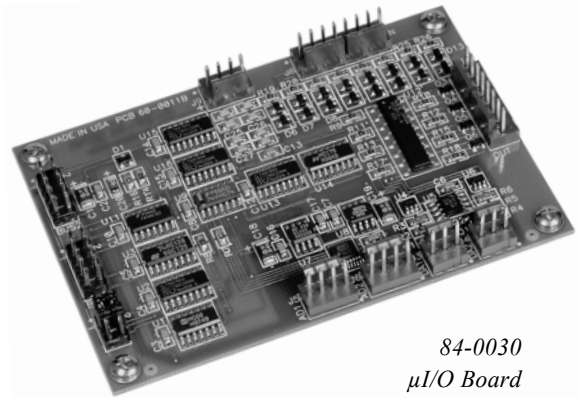
84-0027
 μ FlashTCP

The μ FlashTCP packs a 386 DOS computer and 10BASE-T Ethernet onto a board slightly larger than a credit card. This is an ideal platform for new applications requiring network connectivity, bridging existing equipment to Ethernet networks or an embedded web server. The powerful Intel 386Ex processor, NE2000 compatible Ethernet, and DOS operating system allow design and debugging in a familiar environment. The PC compatible serial ports, counter/timers, and interrupt controller are fully compatible with the IBM PC at both the hardware and software levels - making integration a snap. An extensive array of integrated peripherals for the μ FlashTCP include the μ I/O (shown below), flexible storage options or the addition of a battery backed clock/calendar using the on board 32 Pin Dip socket. With additional features such as the watchdog timer, RS-485 serial port capability, and aggressive pricing, the μ FlashTCP covers many embedded designs.

The μ FlashTCP Development Kit (99-0029) includes a μ FlashTCP controller, Programming Cable, Connector Kit, Ethernet Cables, 110 VAC Adapter, Setup Guide, Schematic and CD with Borland C/C++ V4.52 Compiler, utilities, sample programs and documentation.

μ I/O Peripheral Board For μ FlashTCP

- **4 Channel 12 Bit A/D**
- **2 Channel 12 Bit D/A**
- **8 Protected Digital Inputs**
- **4 One Ampere Relay Drivers**
- **Dimensions 3.75" x 2.50" (63.5mm x 95 mm)**
- **Software Drivers for C, Quickbasic, and Assembly**



84-0030
 μ I/O Board

The JK microsystems μ I/O expansion board gives users the ability to add analog inputs and outputs, digital inputs and isolated high current drivers to the μ FlashTCP single board computer. Each μ I/O board adds 4 channels of 12 bit A/D, 2 channels of 12 bit D/A, 8 digital inputs, and 4 relay output drivers. If more I/O is required, several boards can be added to the system. Boards connect using 10 pin IDC style ribbon cables. A driver library with functions callable from C or QuickBASIC and example programs are available to eliminate the hassle of programming devices on a serial bus.

The μ I/O Peripheral Kit (99-0030) includes a μ I/O board, interface cable, shells and pins kit, standoffs, and users manual for use with the μ FlashTCP.

JK microsystems, Inc.

1403 5th St. Suite D, Davis, CA 95616
<http://www.jkmicro.com>

Phone (530)297-6073
Fax (530)297-6074

μFlashTCP

Specifications

Processor	25Mhz Intel 386Ex
Operating System	XDOS (MS/PC DOS 3.3 compatible)
Memory	512K SRAM, 512K Flash
Ethernet	10BASE-T, NE2000 compatible Link status and Activity LEDs
Serial Port 1	RS-232 with 5 handshake lines COM1, address 0x3F8, IRQ 4 115200 baud maximum
Serial Port 2	RS-232 no handshaking or RS-485 half duplex, COM2, address 0x2F8, IRQ 3 115200 baud maximum
Digital I/O	10 Bits (P3.0-P3.5 & P1.4-P1.7) Pin configurable as input or output P3.3 and P3.4 configurable as interrupts 8mA source/sink
Watchdog	Programmable timeout, Generates processor NMI
Sync. Serial	Full duplex, Independent Rx and Tx clocks, Master or Slave operating mode
Supply Voltage	5V DC ±10%
Supply Current	400mA (nominal)

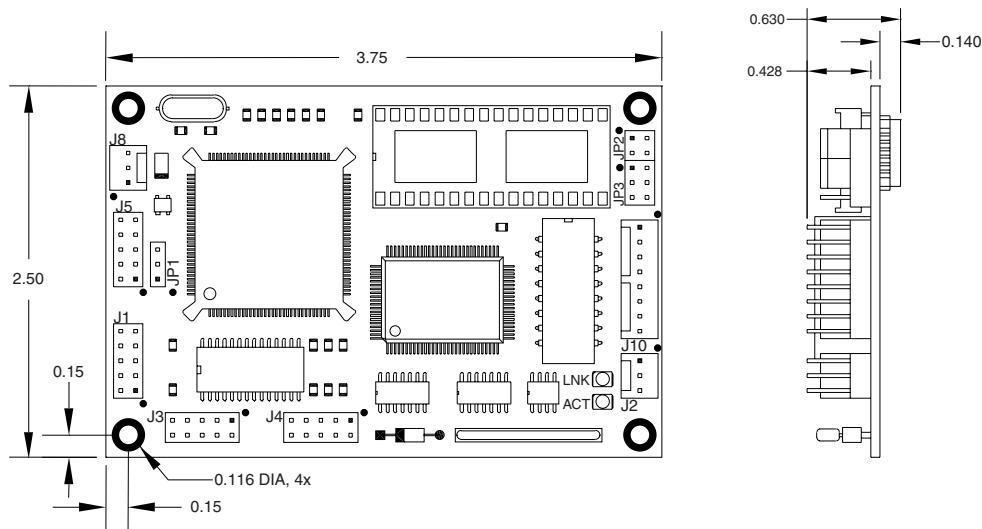
Humidity	5 - 90%, non-condensing
Temperature	-4° to 185°F (-20° to 85°C)
Weight	1.6 oz (45 gm)
Dimensions	3.75" x 2.50" x 0.63" (95mm x 63.5mm x 16mm)

Connectors and Jumpers

J1	General I/O & Synchronous Serial
J2	RS-485
J3	COM1
J4	COM2 / Console
J5	Multi-I/O Bus (General I/O)
J8	Power
J10	Ethernet
JP1	Watchdog NMI Enable
JP2	Socket Memory Type
JP3	Boot Memory Location

Optional Features

- M-Systems DiskOnChip Flash Disk, 512K SRAM, 512K Flash or Battery backed clock calendar chip with 128K SRAM (20-0074)
- Multi-I/O or μI/O peripheral boards for I/O expansion.



JKmicrosystems, Inc.

1403 5th St. Suite D, Davis, CA 95616
<http://www.jkmicro.com>

Phone (530)297-6073
Fax (530)297-6074