

M-PC2 Selection Guide



M-PC2 Fixed In-Vehicle Computer

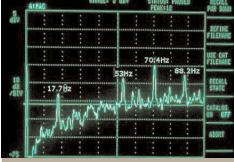
	M-PC2-100	M-PC2-200	M-PC2-300	M-PC2-400	M-PC2-500	M-PC2-600
Processor	Intel Celeron 1.3 GHz	Intel Pentium M 1.8 GHz	Intel Pentium M 1.8 GHz	Intel Pentium M 1.8 GHz	Intel Pentium M 1.8 GHz	Intel Pentium M 1.8 GHz
Memory	1024MB	1024MB	1024MB	1024MB	1024MB	2048MB
Hard Disk	80GB	80GB	80GB	80GB	80GB	80GB
3G (HSDPA)/GPRS dual modem			•		•	•
GPS	•	•	•	•	•	•
WLAN	•		•	•		•
Video Capture/PAL camera support	•	•	•	•	•	•
Hard Disk Recorder				•	•	•
On Screen Display				•		•

Bespoke builds are available for high volume orders - POA

All options include Microbus Support Software:

- **Task Switch** - Create up to three new menus which can be accessed from the OnScreen Control Menu
- **Taskbar** - A set of buttons that are always displayed and let you run your most commonly used applications
- **Screen Clean** - Disables the touchscreen while you clean it and shows where it has been cleaned
- **LCD Off** - Switches off the screen display. Useful for covert work
- **Brightness Controls** - User-configurable day and night brightness settings including manual dimming adjustment
- **TRACKER®** - Displays directional information to track stolen vehicles
- **GPS Mileage Monitor** - Uses GPS to monitor mileage for service intervals
- **Serial Port Splitter** - Duplicates incoming data from a serial port and send to a number of virtual serial ports

AES5 Issue 10

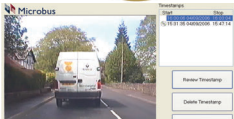


AES5 Issue 10 compliant housing
Increased EMC shielding

Software Options



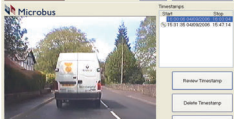
Windows Operating Software with Microbus Utilities (see Build Options)



iDVR
Integrated Digital/Hard Disk Video Recorder. Record, Timestamp, Save and Download.
NB System Modules Options 400, 500 and 600 only



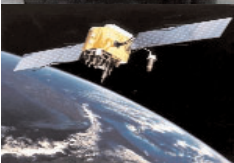
Continuous Loop iDVR
Records a 180 minute loop of video which can be saved and removed.
NB System Modules Options 400, 500 and 600 only - mutually exclusive with iDVR



GPS Overlay
GPS-derived Time, date, location and own vehicle speed overlaid on screen
NB System Modules Options 400 and 600 only



CCTV
Still frame capture. Works off any video chip. Price per system module



GPS Mileage Monitor

Screen Fitting Options



8.4" screens only
DIN slot mount with DIN box and hinge



8.4" screens only
Non DIN box type - modified tongue & hinge



10.4" and 12.1" screens only
Truck mount

Touchscreens



8.4" TFT SVGA Touchscreens

8.4" TFT SVGA

8.4" TFT SVGA with Remote Control Button

8.4" TFT SVGA with Recessed Connector (includes 5m screen cable)

8.4" TFT SVGA Covert Screen (with handle and holster)

8.4" TFT SVGA Transflective

10.4" TFT SVGA Touchscreens

10.4" TFT SVGA

10.4" TFT XGA

12.1" TFT SVGA Touchscreens

12.1" TFT SVGA

12.1" TFT XGA

Screen Cables



Screen Cable 2m

Screen Cable 3m

Screen Cable 5m - Standard

Screen Cable 6m

Screen Cable 7m

Screen Cable 8m

Screen Cable 10.1m

Screen Cable 15m

Non-Touchscreens and Cables



15" TFT CRT Screen

Power Lead 3m

Power Lead 4m

CRT Cable 1m

CRT Cable 3m

CRT Cable 5m

CRT Cable 10m

European Screen Cables

Screen Cable 5m

Screen Cable 6m

Vehicle Dashboard Fittings



Fittings for various vehicle types

Keyboards



PS/2 Keyboards

- Keyboard Mini PS/2 UK (SL-75)
- Keyboard Mini Backlit PS/2 US (SL-75)
- Keyboard Mini Backlit PS/2 with Rubber Boot UK (SL-75)



PS/2 Keyboards with Integrated Pointer

- Keyboard Rugged Backlit + Hula Point Center PS/2 UK (SL-86)
- Keyboard Rugged Backlit + Hula Point Center PS/2 US (SL-86)
- Keyboard Rugged Backlit + Hula Point Center PS/2 Swedish/Finnish (SL-86)
- Keyboard Rugged Backlit + Hula Point Center PS/2 French (SL-86)



- Keyboard Compact Rugged Backlit + Hula Point PS/2 UK (SLK-79)
- Keyboard Compact Rugged Backlit + Hula Point PS/2 French (SLK-79)
- Keyboard Compact Rugged Backlit + Hula Point PS/2 Swedish/Finnish (SLK-79)
- Keyboard Compact Rugged + Hula Point PS/2 UK (SK-79)

PS/2 Wireless Keyboards with Integrated Pointer



- Keyboard Mini Infra-Red + Trackball PS/2 UK

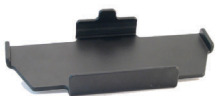
USB Keyboards

- Keyboard USB (Full size)
- Keyboard Mini USB UK (Black or Beige colour options)
- Keyboard Mini + Trackball USB UK (White)
- Keyboard Compact Rugged + Hula Point USB Swedish/Finnish (SK-79)
- Keyboard Compact Rugged Backlit + Hula Point Center USB Swedish/Finnish (SLK-79)

Keyboard Holsters



- Holster for Keyboard Mini c/w fixings (SL-75)



- Holster for Keyboard Compact Rugged Backlit c/w fixings (SLK-79)

Keyboard Cables



- Keyboard Cable 5m - Standard
- Keyboard Cable 7m
- Keyboard Cable 10m
- Keyboard/Mouse Splitter Cable

Options

	Battery Backup	
	Protective Cage	
	Relay Box (c/w cable and manual override)	
	Mouse 2 button PS/2	
	Mouse 3 button PS/2	
	USB to DVD Drive (c/w power and USB leads)	
	USB to 4 USB 2.0 Hub (c/w cable)	
	USB to 4 Serial Expansion Box	
Speakers		
	Mono Speaker	
	Mono Speaker with 5m cable	
	Mono Speaker + Volume Control	
	Mono Speaker + Volume Control with AES5 compliance for EMC	

Antennas

Antennas		
GPS Antenna		
	GPS 3.5 18db SMA male 3m	
	GPS 3.5 18db SMA male 5m	
	GPS Bulkhead 3-5V 18db 5m SMA Male	
3G/GPRS Antenna		
	3G/GPRS 2.5m SMA male	
Wireless LAN Antenna		
	Wireless LAN 802.11 Bulkhead Mount	
	Wireless LAN 802.11 Magnetic Mount	
	Wireless LAN 802.11 Glass Mount	
	Wireless LAN 802.11 Blade	
Combined GPS, 3G/GPRS, Wireless LAN Antenna		
	GPS 5m cable	
	3G/GPRS 5m cable	
	Wireless LAN 5m cable	

Power Converters

Power Converter 24V to 12V (36w)	
Power Converter 110V-220V to 12V (60w)	

Card Swipes

Card Swipe Tracks 1,2,3	
Card Swipe Tracks 1,2	
Card Swipe Tracks 2,3	

Printers

Printer Thermal 24V 8.75"	
Printer Thermal 9-40V 203DPI 58mm Clear	
Printer Thermal 9-40V 203DPI 58 mm Dark Grey	

3rd Party Options

RSG Matrix Sign

Fixed	
Tip Up	

Federal Lightbar

Vista GEP500 Standard Spec	
Hand Controller	
Vista Wiring Harness 23V	

Stonewood Encrypted Hard Disks

Enhanced Secure Disk 40GB	
Stonewood Token	
Stonewood Parallel Token Interface	
Stonewood USB Token Interface	
Stonewood Key Management Kit	
Stonewood Cabel to Parallel Token Interface	

Petards EIMC Speed-Tec

Speed-Tec V0 Front Camera Solution	
Speed-Tec V1 Front Camera Solution	
Speed-Tec V2 Front & Rear Camera Solution	