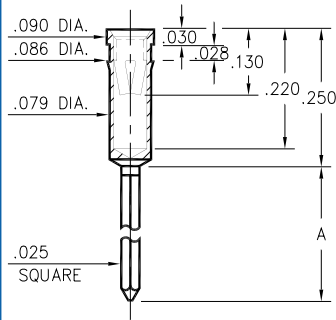


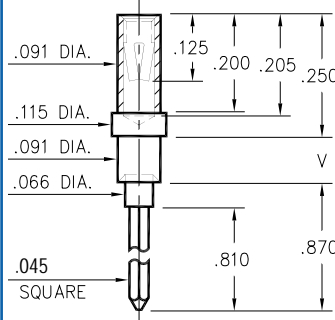
## 1052/1053



Basic Part Number	# of Wraps	Length A
1053-2	2	.360
1052-3	3	.515

**105X-X-17-XX-34-XX-02-0**  
Press-fit in .083 mounting hole

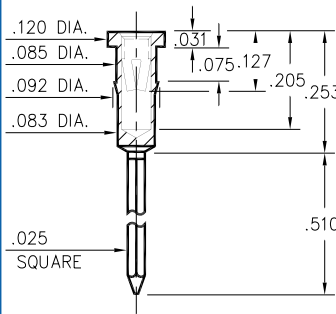
## 0383



Basic Part Number	Board Thickness	Length V
0383-1	.062	.094
0383-2	.094	.125
0383-3	.125	.156

**0383-X-17-XX-34-XX-02-0**  
Swage mount in .094 hole

## 0382



**0382-3-17-XX-34-XX-02-0**  
Press-fit in .089 mounting hole

### SPECIFICATIONS

**SHELL MATERIAL:**  
Brass Alloy 360, 1/2 Hard

**CONTACT MATERIAL:**  
Beryllium Copper Alloy 172, HT

**DIMENSION IN INCHES**  
**TOLERANCES ON:**  
LENGTHS: ±.005  
DIAMETERS: ±.002  
ANGLES: ± 2°

**ORDER CODE: XXXX - X - 17 - XX - 34 - XX - 02 - 0**

**BASIC PART #** \_\_\_\_\_

**SPECIFY SHELL FINISH:** \_\_\_\_\_

**01** 200µ" TIN/LEAD OVER NICKEL  
**15** 10µ" GOLD OVER NICKEL

**SPECIFY CONTACT FINISH:**

**01** 200µ" TIN/LEAD OVER NICKEL  
**14** 10µ" GOLD OVER NICKEL  
**27** 30µ" GOLD OVER NICKEL

**SELECT CONTACT**

**#34 CONTACT (DATA ON PAGE 212)**