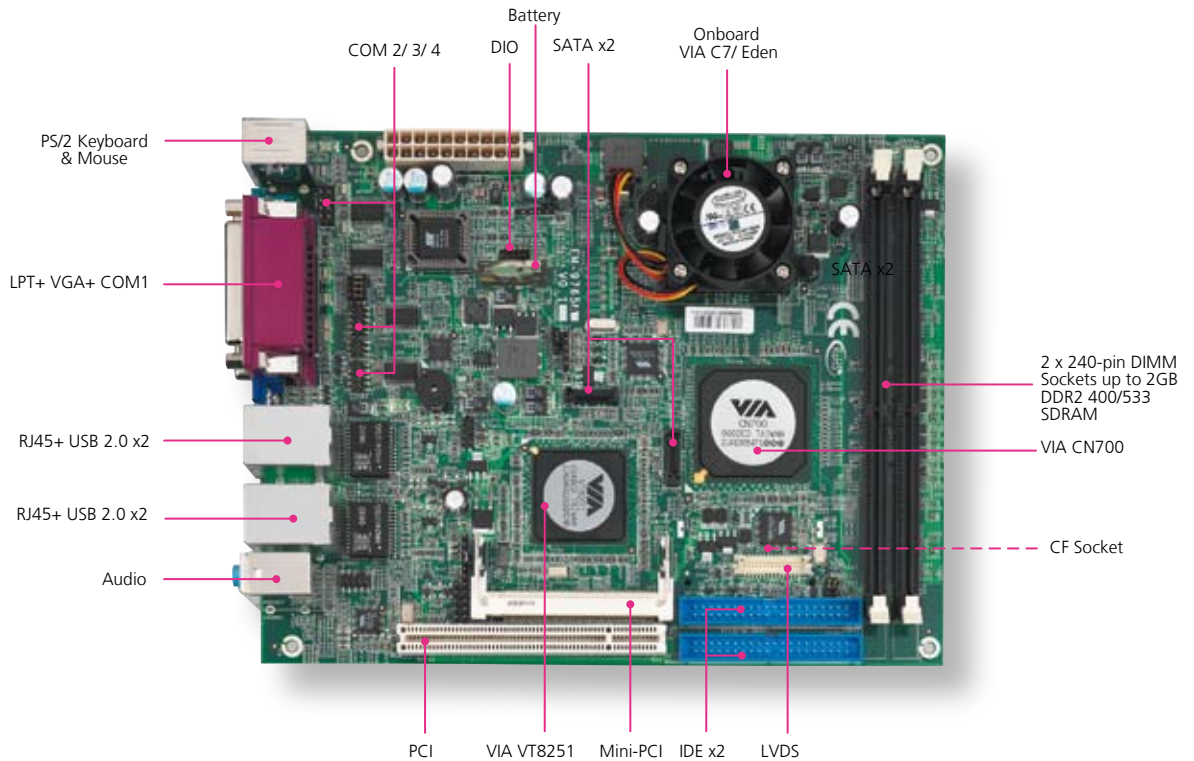


# EM-9765

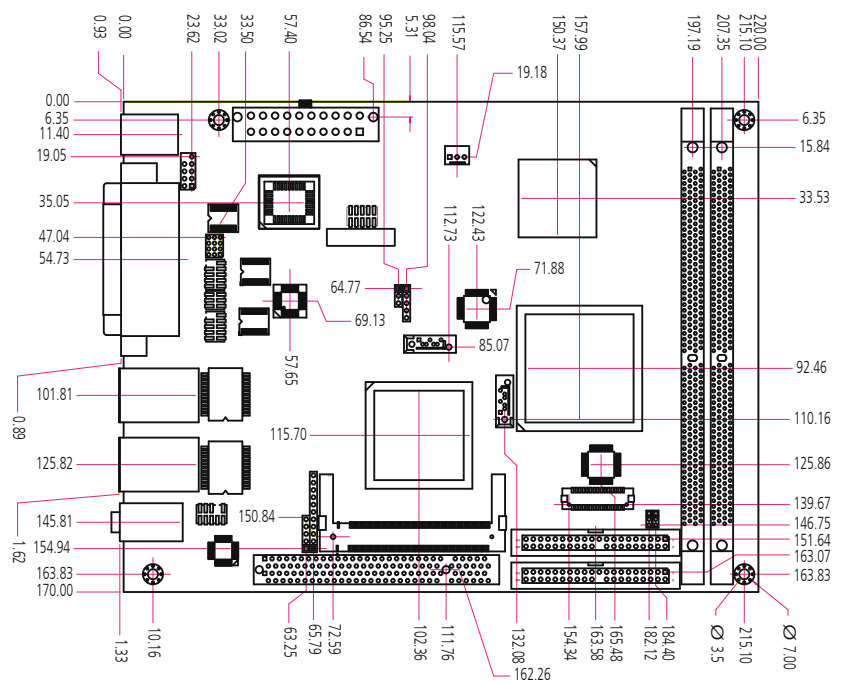
ITX, VIA V4 C7/ Eden EBC with VGA/ SATA/ LAN/ USB/ CF/ COM/ Mini-PCI/ Audio/ LVDS/ TV-Out/ S-Video

- VGA
- LVDS
- AUDIO
- LAN
- CF
- USB
- TV-OUT
- SATA
- S-VIDEO
- COM
- MINI-PCI



## FEATURES

- Onboard VIA C7/ Eden CPU
- VIA CN700 Chipset
- Two DIMM up to 2GB DDR2 400/533 SDRAM
- VGA, 2-CH LVDS, TV-out
- Dual Realtek RTL8111B Gigabit LAN
- 1 PCI, 1Mini-PCI, Type II CF
- 2 SATA, 6 USB 2.0, 4 COM, CRT, 2 IDE , 1 IrDA ,DIO



FEATURE	DESCRIPTION		
<b>Platform</b>	Form Factor	ITX	
	Processor	Onboard VIA V4 C7 1GHz /Eden V4 1GHz, 500MHz, 400MHz	
	Chipset	VIA CN700/ VT8251	
	BIOS	AMI Flash BIOS	
	Cache Memory	Processor Built-in	
<b>System Memory</b>	Technology	DDR2 400/533MHz SDRAM	
	Max Capacity	2GB	
	Socket	240-pin DIMM x2	
<b>OS Supported</b>	Windows (XP, XPe), Linux		
<b>Storage Interface</b>	Hard Drive Interface	IDE x2, Serial ATA x2	
	SSD (CF Socket)	CompactFlash II x1	
<b>Networking</b>	Speed	10/100/1000 Mbps	
	I/O	RJ45x2	
	Controller	RealTek RTL8111B(GbE) or RTL8101E(FE)	
<b>Display</b>	Controller	VIA CN700 integrated UniChrome 3D/2D Graphics Controller	
	Shared memory	support 16 / 32 / 64 MB Frame Buffer sizes	
	Output	VGA, dual channel LVDS(18-bit), TV-out(HDTV)	
<b>Audio</b>	Codec	VIA VT1612A with AC'97 Codec	
	I/O	Mic-in, Line-in, Line-out, Speaker-out	
<b>I/O Interface</b>	Serial Port	RS-232 x3, RS-232/422/485 x1	
	Parallel Port	1	
	Universal Serial Bus	6 (v2.0)	
	Serial-ATA	2	
	Digital I/O	8-bit Input or 8-bit Output for TTL-level	
	IR Interface	115k bps, IrDA 1.0 compliant with pin-header connector	
	Keyboard	Mini-DIM PS/2	
	Mouse	Mini-DIM PS/2	
	<b>Hardware Monitoring</b>	Controller	Winbond W83697HG integrated Hardware monitor function
		RTC	RTC with Li-Battery
Watchdog timer		1-64 level software programmable watchdog timer	
<b>Cooling</b>	Heatsink & Fan		
<b>Expansion</b>	Mini-PCI x1, PCI x1		
<b>Environmental Parameters</b>	Temperature, ambient operating	0~60°C (32~140°F)	
	Humidity (RH), ambient operating	0%~90% relative humidity, non-condensing	
	Storage Temperature	-20~70°C (-4~158°F)	
<b>Physical Dimensions</b>	Dimensions	170 x 220 mm (6.69" x 8.7")	
<b>Power</b>	Input	20-pin ATX Power connector /12-pin (P8,P9) AT Power Connector	
	Form Factor	AT/ATX support	
<b>Compliance</b>	CE, FCC, RoHS		

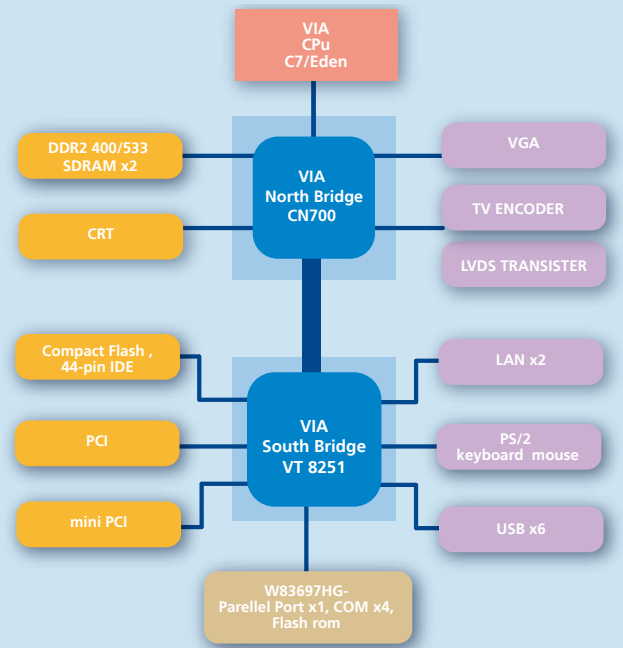
## ORDERING INFORMATION

<b>EM-9765A</b>	VIA V4 C7 1GHz(9W) with Dual Gigabit LAN/6 USB
<b>EM-9765B</b>	VIA V4 Eden 400MHz(2.5W) with Single Fast LAN/4 USB
<b>EM-9765C</b>	VIA V4 ULV Eden 500MHz(1.5W) with Single Fast LAN/4 USB
<b>EM-9765D</b>	VIA V4 Eden 1 GHz(5W) with Dual Gigabit LAN/6 USB

## OPTIONAL ACCESSORIES

ITEM	DESCRIPTION	PART NUMBER
<b>LVDS cable</b>	30-pin to 20-pin 18Bits/one channel, L=300mm	080W193003001
<b>TV-out cable</b>	6-pin, L=130mm	080W1H0601301
<b>USB cable</b>	2 x 4-pin Y cable, L:100mm	080W1A1001001
<b>SATA cable</b>	7-pin, L=150mm	080W170701502
<b>COM cable (COM3 or 4)</b>	10-pin, 2.0mm pitch D-Sub cable, L=300mm	080W151003001

## PLATFORM ARCHITECTURE



### About Lanner

Founded in 1986 and publicly listed (TAIEX 6245) since 2003, Lanner Electronics Inc. is an ISO 9001 certified designer and manufacturer of reliable, frontline security, storage and applied computing platforms and solutions. With headquarters in Taipei, Taiwan and branches in the U.S., India, and China, Lanner is uniquely positioned to deliver custom technical solutions with localized, value-added service.

### Contact information

Lanner Electronics Inc  
7F, 173, Section 2 Datong road  
Sijhih City, Taipei County 221, Taiwan

**T** +886 2 86926060

**F** +886 2 86926101

**E** sales@lannerinc.com

**W** www.lannerinc.com