



# ASE Models 400 & 410

## Key features

- 1000 MB of total analysis per port
- Deployable in Fast Ethernet (Model 400-only) or Gigabit Ethernet to Premises Technologies (410-SFP)
- IP Transport software
- Voice over IP (VoIP) analysis capability with 2,000 concurrent call analysis
- Application analysis capability with Server Connect and Server Response time metrics
- LAN management port
- Real-time SNMP events
- 4,096 site to site IP Circuits for SLA validation, like round trip delay, packet delivery ratio and availability.
- Four GigE Interfaces of analysis aggregated to one view.

## 100/1000 Ethernet ASE

With span mode capabilities

The Visual Performance Manager™ 100/1000 Ethernet ASE (available on version 6.1 or later) enhances the analysis functionality of Ethernet networks. The Analysis Service Element (ASE) provides up to 1000 Mbps of detailed network traffic analysis and management. It supports monitoring IP convergence of bandwidth, applications, burst, and VOIP data traffic.

The Ethernet ASE is deployed on the LAN or WAN side of the customer edge router for flexible deployment options. The IP Transport ASE is designed to display traffic to or from the WAN, and ignore local LAN traffic (such as between a client and an Internet or application server) allowing for segmentation troubleshooting between the Network and the Applications at the Data Center. Optional Installation services are available on this high speed hardware ASE.



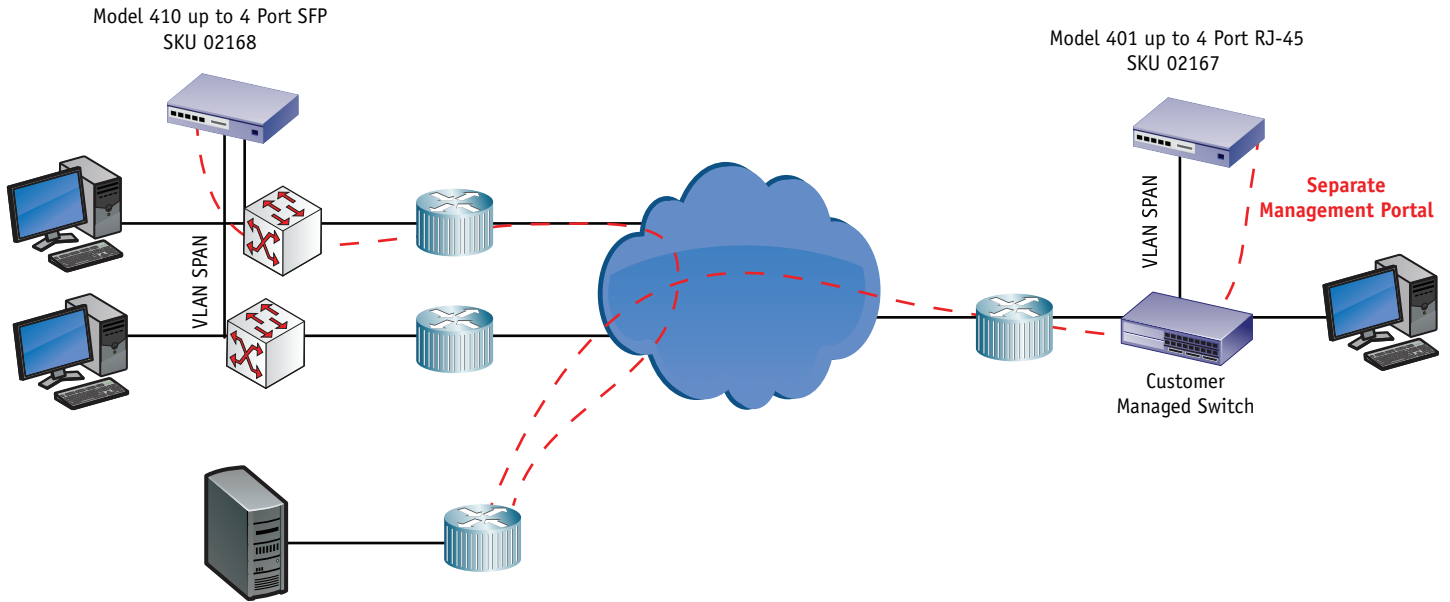
Ethernet Span ASE front view



Ethernet Span ASE rear view



# Model 400/410 Deployment Options



## Customer Hosted Visual Performance Manager

- Visual Performance Manager 6.1
- Integrates with Data Center Application Performance Appliance
- Supports NetFlow Performance Appliance using NetFlow data
- Integrated, scalable infrastructure

### Notes

- IP Transport Image only
- No LinkSafe Required
- Comes with up to 4 port interfaces with RJ-45 or flexible SFP MM, SFP SM and RJ-45
- Power Loss Notification not necessary
- SPAN only option
- 4,096 IP Circuits
- 2,000 Concurrent calls

- 1,200,000 Daily Calls
- Separate Physical Layer View
- Aggregate view at Port speed

### Customer Responsibilities

- Space & Power for ASEs & Customer Server
- Ethernet connection between ASE & Customer Router
- Customer Server installation & Maintenance
- Optional Software packages available

## Specifications

Model	400 (SKU 02167)	410 (SKU 02168)
Description	4 PORT MONITOR 100/1000 RJ45 APPLIANCE BASED ETHERNET ASE	4 PORT MONITOR 1 GBPS SFP APPLIANCE BASED ETHERNET ASE
Connections	RJ-45	SFP
Dimensions	1.69 x 17.09 x 24.69 (in)	
Weight	Chassis: 26 lbs Shipping box: 52 lbs	
Max Data Rate	1000 Mbps per interface	
Operating Temp	10o to +35oC (+50o to +95o F)	
Storage Temp	-40o to +65oC (-4o to +149o F)	
Input Power	228 Watts, 100-240V, 50/60 Hz	
Redundant Power Supplies	Yes	
Bit Rate	100/1000 Mbps or 1000 Mbps	
Baud Rate	19200 or 9600 bps	
Parity	8 data bits, no parity	
Stop Bit	1 stop bit	
Electrical Format	EIA RS-232, DTE	