

## Features and Benefits

- Any-to-Any connectivity
- Aggregate 10G links to 1G tools
- Intelligently filter via Citrus™ web GUI or CLI
- Replicate traffic to multiple monitoring tools
- Solutions for monitoring asynchronously routed traffic



## Applications

- Share span ports among multiple IT teams
- Filter and customize data flow to each monitoring tool
- Divide large loads across multiple monitoring appliances
- Aggregate multiple links to multiple monitoring tools

## The GigaVUE-212 Family

- GigaVUE-212 | Two 10G & twelve 1G ports
- GVS-213 | Dual fault-tolerant 4 TAP optical
- PRT-202 | GigaPORT-SFP, 4x1G SFP or SFP+ cage expansion module

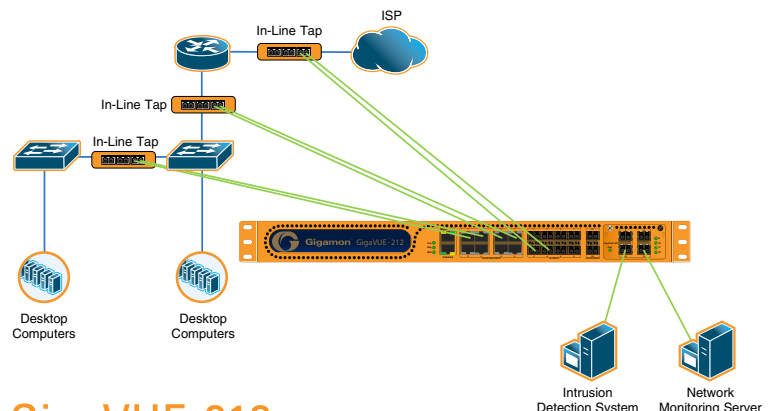
## Product Description

Gigamon delivers Intelligent Traffic Visibility Networking for network monitoring of data centers, service providers, and enterprise networks.

The GigaVUE-212 is an entry level Traffic Visibility Node which aggregates, multicasts, filters and divides traffic flows across multiple passive monitoring tools at a fraction of the speed of similar devices. The node supports twelve 1Gb ports and two 10Gb ports with an optional expansion module for support of another four 1Gb failover protected ports.

The GigaVUE-212 is ideal for data centers and enterprises either requiring a low-cost option in order to enhance network monitoring for the first time, or have areas of the networks where lower port counts are needed to support comprehensive monitoring.

With support for plug-in of multiple out-of-band tools, the GigaVUE-212 enables enterprises and data centers to connect any tool to any data stream simultaneously.



## GigaVUE-212

### Empowering 1G Tools