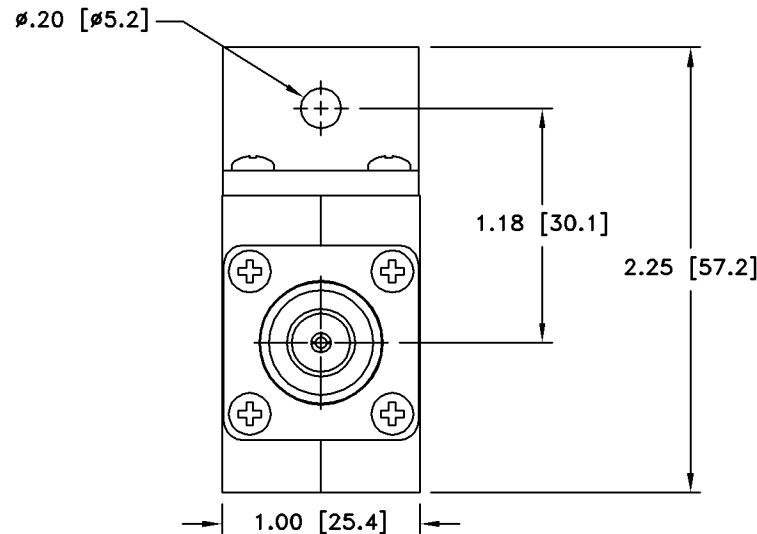
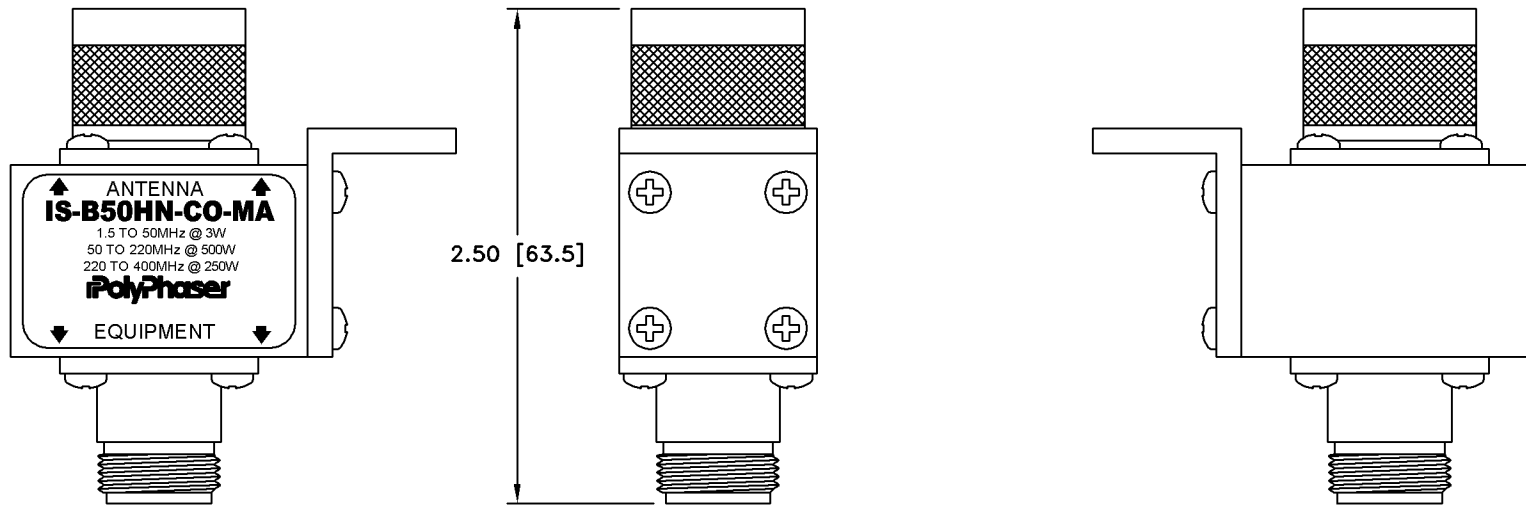


ALL DESIGN, OPERATIVE AND PROCESS DATA PERTAINING TO THE ARTICLE SHOWN ON THIS SHEET IS THE PROPERTY OF POLYPHASER CORPORATION. THE INFORMATION IS NOT TO BE COPIED, REPRODUCED, REVEALED TO OR APPROPRIATED BY OTHERS WITHOUT THE EXPRESS WRITTEN CONSENT OF POLYPHASER CORPORATION.

These commodities or technology are exported from the U.S. in accordance with the Export Administration Regulations. Diversion contrary to U.S. law prohibited.

| REVISIONS | | | | |
|-----------|-------------|-----|------|------|
| REV LTR | DATE | ENG | MKTG | Q.A. |
| B | 09/08/08 SH | AD | -- | -- |



CUSTOMER APPROVAL: _____ DATE: _____

ALL DIMENSIONS SHOWN ABOVE ARE FOR REFERENCE ONLY.

| MAXIMUM CHARACTERISTICS |
|---|
| APPLICATION: BULKHEAD MOUNT |
| FREQUENCY RANGE: 1.5MHz TO 400MHz |
| VSWR: ≤1.2:1 @ 1.5MHz TO 2MHz ≤1.1:1 @ 2MHz TO 400MHz |
| INSERTION LOSS: ≤0.1dB OVER FREQUENCY RANGE |
| THROUGHPUT ENERGY: ≤20mJ |
| MAX POWER: VHF 500W, UHF 250W, HF 3kW |
| TURN-ON: ±1200Vdc ±20% 7ns FOR 2kV/ns |
| SURGE: 50kA IEC 61000-4-5 8/20μs WAVEFORM 500 JOULES. |
| VIBRATION: 1G AT 5Hz TO 100Hz |
| TEMPERATURE: -45°C TO +85°C STORAGE/OPERATING +50°C |

| | | | | |
|-----------------------------|------------------|---|-----------------|--|
| DRAFTER S. HALL | DATE 10/04/99 | P.O. BOX 9000 MINDEN, NV 89423 TEL: 775-782-2511 FAX: 775-782-4476 DWG NO/PART NO/DESCRIPTION IS-B50HN-CO-MA CUSTOMER PRINT | | |
| MECH ENGINEER M. MATTSON | DATE 03/17/00 | | | |
| ELEC ENGINEER K. BARTEL | DATE 03/20/00 | | | |
| MARKETING G. HORSTMAN | DATE 03/24/00 | | | |
| QUALITY DEPT J. BERNARD | DATE 03/20/00 | | | |
| CAGE CODE 61114 | FILE NAME -C1 | SCALE 1/1 | SHEET 1 OF 1 | |