

**DATA SHEET**
**SPECIFICATIONS**
**MODEL #5165  
AC GENERATOR  
10 KVA - 12,000 RPM**

<b>VOLTAGE:</b>	120/208 VAC
<b>PHASE:</b>	THREE
<b>FREQUENCY:</b>	400 HZ
<b>POWER FACTOR:</b>	0.75 LAG TO UNITY
<b>REGULATION:</b>	112-118 VAC FROM 385 TO 410 HZ
<b>SPEED RANGE:</b>	11,550-12,300 RPM
<b>OVERSPEED:</b>	15,000 RPM
<b>CONTINUOUS RATING:</b>	10 KVA
<b>OVERLOAD:</b>	150%, 5 MIN 200%, 5 SEC
<b>EFFICIENCY:</b>	85% AT RATED LOAD
<b>COOLING:</b>	INTEGRAL FAN
<b>AMBIENT:</b>	-30° TO +180°F
<b>ALTITUDE:</b>	0 TO 20,000 FT
<b>BEARING LIFE:</b>	2000 HOURS
<b>WEIGHT:</b>	GEN: 20.4 LBS GCU: 2.20 LBS CT: 0.45 LBS
<b>PROTECTIVE FUNCTIONS:</b>	OVERVOLTAGE UNDERVOLTAGE UNDERFREQUENCY SHORT CIRCUIT DIFFERENTIAL FAULT
<b>COMPLIANCE:</b>	MIL-STD-810B MIL-STD-461 MIL-G-21480A

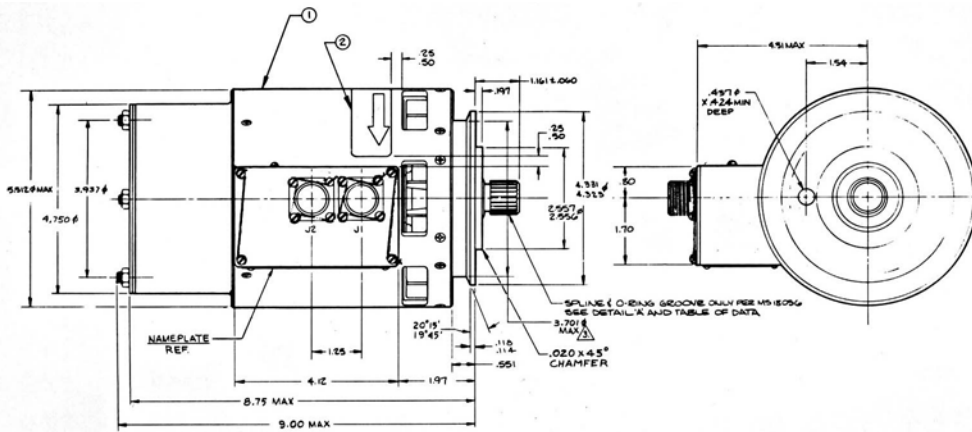

**DESCRIPTION**

Model 5165 brushless generator system comprises a salient pole machine with an internal permanent magnet section to provide self excitation.

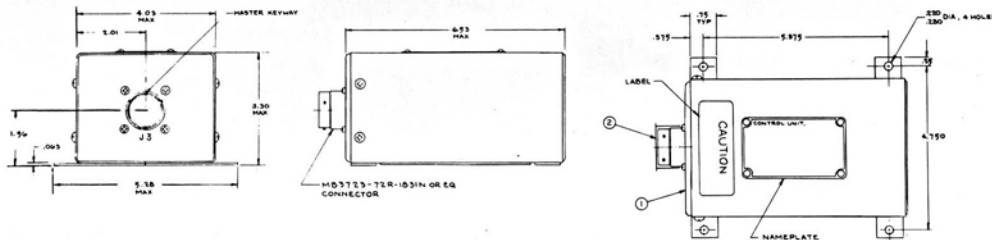
The generator drive shaft incorporates a shear section designed to shear at a torque of 500 lb.-in. maximum.

This particular 10 KVA system provides the main AC power for the HH 65A, U.S. Coast Guard SRR Helicopter. This helicopter is a derivative of the SA 266G-Dauphin 2.

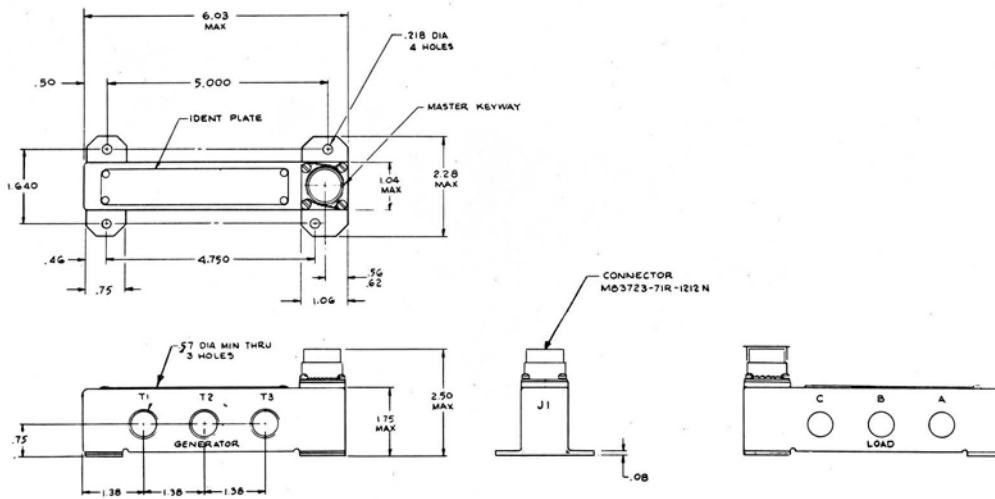
**OUTLINE DETAILS**



**GENERATOR**



**GENERATOR CONTROL UNIT**



**CURRENT TRANSFORMER**