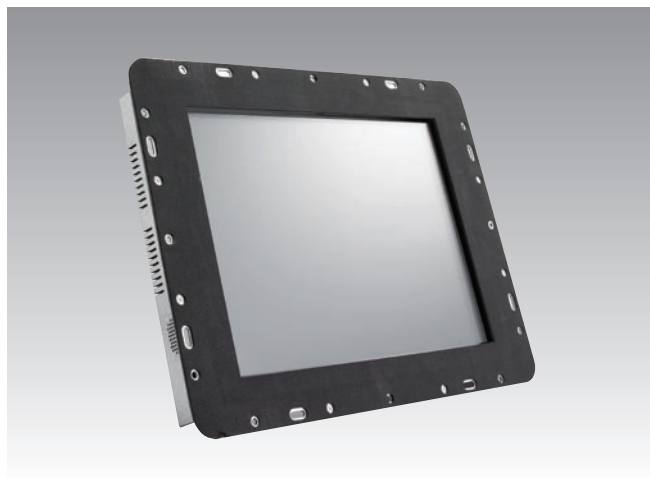


# ES-3117

## 17" Industrial LCD Monitor



### Features

- 17" LCD supports 1280 x 1024 pixels
- Multiple touchscreen options for different applications
- Versatile mounting brackets
- Open-frame architecture with Embedded LCD touch panel
- Supports full-function OSD control keys to optimize the display
- Sunlight readable (optional)
- Ultra-high brightness up to 1000 cd/m2 (optional)

### Introduction

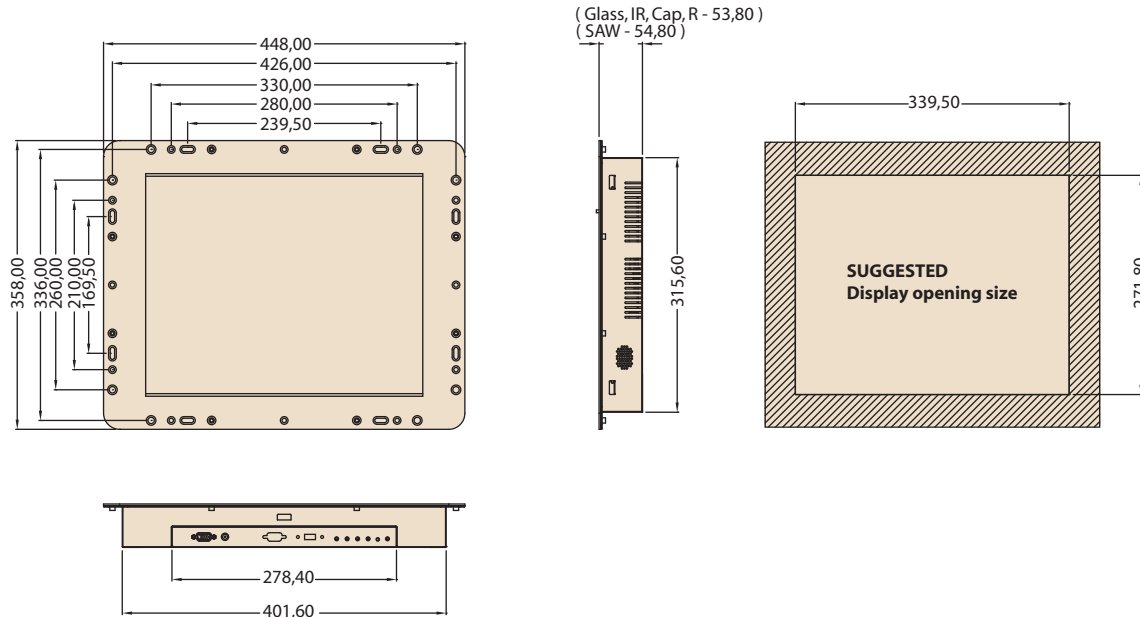
The Advantech Industrial Open Frame monitor series is equipped with a touchscreen input device, mainly for self-service Kiosk applications. The ES-3117 series is a 17" LCD monitor, adaptable to different touchscreens: Resistive, Capacitive, SAW and Infrared or tempered glass and Vandal proof glass. Its mechanical enclosure is made of strengthened steel to withstand harsh environments.

### Specifications

Processor System	I/O Ports	15-pin D-Sub, DC power input, RS-232 port, power switch			
	Display Input Signal	Analog RGB, 0.7 VP-P/75 Ohm			
	Multi-Scan Mode	Supports VGA/SVGA/XGA/SXGA			
	Refresh Rates	FH: 30 ~ 60 KHz, FV: 56 ~ 75 Hz			
	OSD Control	Key: Provides auto-tune/menu/decrease/increase Function: Supports Brightness/Contrast/Clock/Phase/Horizontal Position/Vertical Position/Sharpness			
	Power	External 45 W power adaptor, with AC 100 ~ 240 V @ 1.2 A input and DC +12 V @ 3.75 A output			
	Dimensions (W x H x D)	ES-3117G-VEAE/ES-3117R-VEAE/ES-3117C-VEAE: 448 x 358 x 58.30 mm (17.64" x 14.09" x 2.30") ES-3117S-VEAE: 448 x 358 x 59.30 mm (17.64" x 14.09" x 2.33") ES-3117V-VEAE/ES-3117V-VEA-SRE: 448 x 358 x 59.30 mm (17.64" x 14.09" x 2.33")			
Weight	4.5 kg				
Environment	Operating Temperature	0 ~ 50° C (32 ~ 122° F)			
	Storage Temperature	-20 ~ 60° C (-4 ~ 140° F) for standard LCDs			
	Humidity	5 ~ 95% @ 40° C, non-condensing			
	Shock	10 G peak acceleration (11 ms duration)			
	EMC Approved	CE, FCC			
Safety Approved	UL				
Display	Feature	Standard / (OEM)	Sunlight Readable		
	Size	17"	17"		
	Resolution (Pixels)	1280 x 1024 SXGA	1280 x 1024 SXGA		
	Number of Colors	16.2 M	16.2M		
	Viewing Angle (L/R/U/D)	70°/70°/70°/60°	70°/70°/70°/60°		
	Brightness (cd/m2)	300	300		
	Contrast Ratio	500:1	500:1		
	Response Time (ms)	8	8		
	Lamp Life (hrs)	50,000	50,000		
	Long-term Support	Yes	Yes		
	Transflective	N/A	Yes		
Touchscreen	Type	Analog Resistive	Capacitive	SAW	Infrared
	Thickness	3.48 mm	3.18 mm	2.7 mm	3.0 mm
	Resolution	4096 x 4096	1024 x 1024	4096 x 4096	4096 x 4096
	Light Transmission	80%	85%	92%	92%
	Controller Interface	RS-232/USB	RS-232	RS-232/USB	RS-232/USB
	Power Consumption	+5 V @ 200 mA	+5 V @ 100 mA	+5 V @ 75 mA	+5 V @ 150 mA
	Durability (touches)	35 million hrs	225 million hrs	50 million hrs	MTBF 100,000 hrs
	Driver OS Support	DOS, Linux, Mac, Windows 95/98/NT/ME/CE/2000/XP			

## Dimensions

Unit: mm



## Ordering Information

P/N	Type	Brightness (cd/m2)	Interface	Touchscreen	Touch Interface	Transflective
ES-3117G-VEAE	Open Frame	300	VGA	Tempered Glass	N/A	N/A
ES-3117R-VEAE	Open Frame	300	VGA	5-wire Resistive	RS-232/USB	N/A
ES-3117C-VEAE	Open Frame	300	VGA	Capacitive	RS-232	N/A
ES-3117S-VEAE	Open Frame	300	LVDS	SAW	RS-232/USB	N/A
ES-3117V-VEAE	Open Frame	300	VGA	Infrared	RS-232	N/A
ES-3117C-VEA-SRE	Open Frame	300	VGA	Capacitive	RS-232	Eco-Transflective

### Notes

- 1.) Capacitive, SAE and Infrared touch panels are recommended for applications requiring sunlight readable outdoor solutions.
- 2.) The list above is of major part numbers for your reference. Other combinations of LCD, touchscreen and signal interface features can be found in the Advantech Display Solutions. The Selection Wizard (<http://www.advantech.com.tw/ePlatform/DS/DisplaySolution.asp>) or CTOS services can be used to get your demand configuration and part numbers to us for ordering.
- 3.) For special requests, you are welcome to use Display Solution DTOS service.

## Power Code Options

Part Name	Description
1702002600	Power Cable UL/CSA (USA) 180 cm
1702031801	Power Cable (UK) 5A-Fuse 180 cm
1702002605	Power Cable 220 V EUROPEAN 250 V/6 A (FRANCE) 180 cm