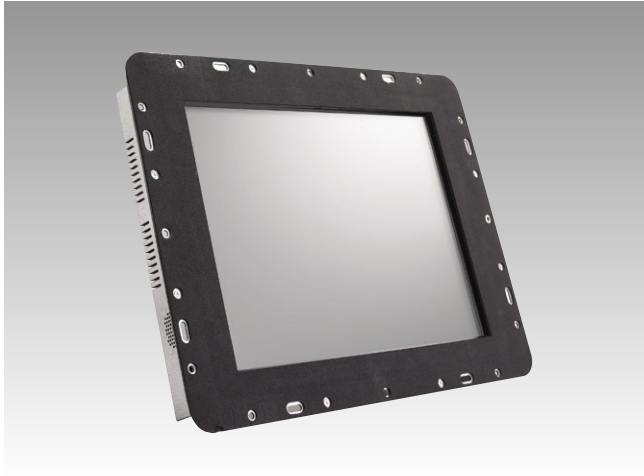


ES-3117

17" Industrial LCD Monitor



Features

- 17" LCD supports 1280 x 1024 pixels
- Multiple touchscreen options for different applications
- Versatile mounting brackets
- Open-frame architecture with Embedded LCD touch panel
- Supports full-function OSD control keys to optimize the display
- Sunlight readable option
- Ultra-high brightness up to 1000 nit option

Introduction

The Advantech ES-3117 Industrial Open Frame 17" Monitor is equipped with a Resistive, Capacitive, SAW or Infrared touchscreen, mainly for self-service kiosk applications. The strengthened steel mechanical enclosure and optional tempered or vandal proof glass enables the ES-3117 to withstand harsh environments.

Specifications

- **I/O Ports** 15-pin D-Sub, DC power input, RS-232 port, power switch
- **Display Input Signal** Analog RGB, 0.7 VP-P/75 Ohm
- **Multi-Scan Mode** Supports VGA/SVGA/XGA/SXGA
- **Refresh Rates** FH: 30 ~ 60 KHz, FV: 56 ~ 75 Hz
- **OSD Control** Key: Provide auto-tune/menu/decrease/increase
Function: Supports Brightness/Contrast/Clock/Phase/Horizontal Position/Vertical Position/Sharpness
- **Power** External 45 W power adaptor, with AC 100 ~ 240 V @ 1.2 A input and DC +12 V @ 3.75 A output
- **Dimensions (W x H x D)** ES-3117G-VEAE/ES-3117R-VEAE/ES-3117C-VEAE: 448 x 358 x 58.30 mm
ES-3117S-VEAE: 448 x 358 x 59.30 mm
ES-3117V-VEAE/ES-3117V-VEA-SRE: 448 x 358 x 59.30 mm
- **Weight** 4.5 kg

Environment

- **Operating Temperature** 0 ~ 50° C (32 ~ 122° F)
- **Storage Temperature** -20 ~ 60° C (-4 ~ 140° F) for standard LCDs
- **Humidity** 5 ~ 95% @ 40° C, non-condensing
- **Shock** 10 G peak acceleration (11 ms duration)
- **EMC Approved** CE, FCC
- **Safety Approved** UL

Display

NEW

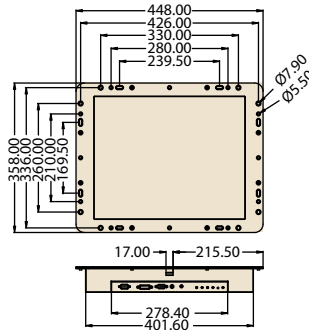
Feature	Standard / (OEM)	Sunlight Readable
Size	17"	17"
Resolution (pixels)	1280 x 1024 SXGA	1280 x 1024 SXGA
Number of Colors	16.2M	16.2M
Viewing Angle (L/R/U/D)	70°/70°/70°/60°	70°/70°/70°/60°
Brightness (nit)	300	300
Contrast Ratio	500:1	500:1
Response Time (ms)	8	8
Lamp Life (hrs)	50,000	50,000
Long-term Support	Yes	Yes
Anti-reflection	N/A	Yes

Touchscreen

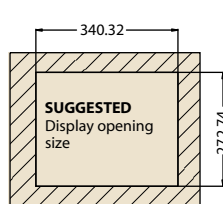
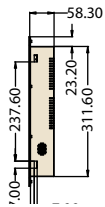
Type	Analog Resistive	Capacitive	SAW	Infrared
Thickness	3.48 mm	3.18 mm	2.7 mm	3.0 mm
Resolution	4096 x 4096	1024 x 1024	4096 x 4096	4096 x 4096
Light Transmission	80%	85%	92%	92%
Controller Interface	RS-232/USB	RS-232	RS-232/USB	RS-232/USB
Power Consumption	+5 V @ 200 mA	+5 V @ 100 mA	+5 V @ 75 mA	+5 V @ 150 mA
Touch Lifetime	35 million hrs	225 million hrs	50 million hrs	MTBF 100,000 hrs
Driver OS Support	DOS, Linux, Mac, Windows 95/98/NT/ME/CE/2000/XP			

Dimensions

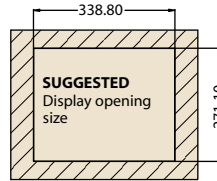
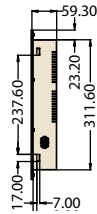
Unit: mm



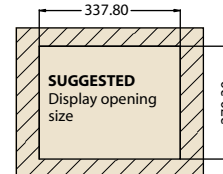
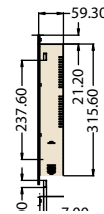
**ES-3117G-VEAE
ES-3117R-VEAE
ES-3117C-VEAE**



ES-3117S-VEAE



**ES-3117V-VEAE
ES-3117V-VEA-SRE**



Ordering Information

Part No.	Type	Brightness (nit)	Interface	Touchscreen	Touch Interface	Transflective
ES-3117G-VEAE	Open Frame	300	VGA	Tempered Glass	N/A	N/A
ES-3117R-VEAE	Open Frame	300	VGA	5 wire Resistive	RS232/USB	N/A
ES-3117C-VEAE	Open Frame	300	VGA	Capacitive	RS232	N/A
ES-3117S-VEAE	Open Frame	300	LVDS	SAW	RS232/USB	N/A
ES-3117V-VEAE	Open Frame	300	VGA	Infrared	RS232	N/A
ES-3117V-VEA-SRE	Open Frame	300	VGA	Infrared	RS232	Yes

Notes

- (1) Capacitive, SAW and Infrared touch panels are recommended for use with sunlight readable outdoor solutions.
- (2) The above list shows major part numbers for your reference. Please refer to the Advantech Display Solutions Selection Wizard (<http://www.advantech.com.tw/ePlatform/DS/dsw.aspx>) or CTOS to find part numbers and order your desired combination of LCD, touchscreen and signal interface.
- (3) Please use Display Solutions DTOS for special requirements.