

PR-103

3-slot Half-size Industrial PC Chassis



● Specifications

- ◆ Drive Bays : 1 x 3.5" FDD
- ◆ One 8cm cooling fan with removable filter
- ◆ Supports backplane : BP-3S, IP-3S/3S2
- ◆ Supports power supply : ACE-870 series or ACE-865V
- ◆ Ship with a mounting kit for Rack mounting solution
- ◆ Vibration :5~17Hz, 0.1" double amplitude displacement
17~640Hz, 1.5G acceleration peak to peak
- ◆ Shock : 10G acceleration peak to peak (11ms)
- ◆ Colors : White (PANTONE 413C)
- ◆ Dimensions : 266(W) x 88(H) x 254(D)mm; (10.5" x 3.5" x 10")
- ◆ Net/GW (kg) : 3/6

● Ordering Information

- **PR-103W/ACE-P** 3-slot compact chassis with ACE- P power supply
 - **PR-103W/ACE-870A** 3-slot compact chassis with ACE-870A power supply
- P Power Supply

PR-1300

3-slot Half-size Industrial PC Chassis



● Specifications

- ◆ Desk Top or Wall mount
- ◆ Drive Bays :1x3.5" FDD
- ◆ One 6cm fan with filter
- ◆ Support Backplane:
BP-3S,IP-3S,IP-3S2 (AT power supply)
IP-3SA (ATX power supply)
- ◆ Standard Power Supply:
ACE-816A 150W ATX PSU
ACE-916A 150W AT PSU
- ◆ Optional Power Supply:
ACE-916AP 150W AT PSU with PFC function
ACE-816AP 150W ATX PSU with PFC function
- ◆ Colors: White (PANTONE 413C)
- ◆ Vibration :5~17Hz, 0.1" double amplitude displacement
17~640Hz, 1.5G acceleration peak to peak
- ◆ Shock : 10G acceleration peak to peak (11ms)
- ◆ Dimensions: 266(W) x 88(H) x 254(D)mm
- ◆ Net/GW (kg): 4/6

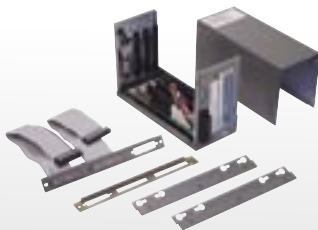
● Ordering Information

- **PR-1300W / Backplane / Power Supply**

BP-3S or IP-3SA ACE-916A or ACE-816A

PAC-50

3-slot Half-size Industrial PC Chassis



● Specifications

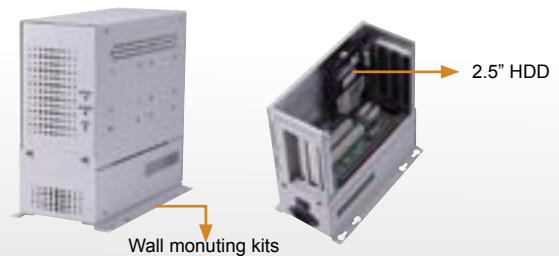
- ◆ Supports max. card length:190mm
- ◆ Five DC input terminal block for power supply connection
- ◆ Convenient FDD, HDD & parallel port cables for external connection
- ◆ Supports backplane: IP-3S, BP-3S, IP-3S2
- ◆ Vibration: 5~17Hz, 0.1" double amplitude displacement
17~640Hz, 1.5G acceleration peak to peak
- ◆ Shock: 10G acceleration peak to peak (11ms)
- ◆ Color: Industrial Green (PANTONE 417C)
- ◆ Dimensions: 91(W) x 146.7(H) x 218(D)mm; (3.6" x 5.7" x 8.6")
- ◆ Net/GW (kg): 2/3

● Ordering Information

- **PAC-50G/B**: 3-slot compact chassis with B backplane
- B Backplane
(Please select specified backplane for each PAC-50 chassis)

PAC-53H

3-slot Half-size Industrial PC Chassis



● Specifications

- ◆ Drive Bays: 2 x 2.5" HDD(Internal)
- ◆ Supports backplane: IP-3S, IP-3S2, BP-3S
- ◆ Supports power supply: ACE-870 series or ACE-865V
- ◆ Vibration: 5~17Hz, 0.1" double amplitude displacement
17~640Hz, 1.5G acceleration peak to peak
- ◆ Shock: 10G acceleration peak to peak (11ms)
- ◆ Colors: White (PANTONE 413C)
- ◆ Dimensions: 90(W) x 200(H) x 214.6(D)mm; (3.5" x 7.9" x 8.4")
- ◆ Net/GW: 3/4 (kg)

● Ordering Information

- **PAC-53HW/ACE-870A/B**:
3-slot compact chassis with ACE-870A power supply & B backplane