

FWAP-3680L

FWAP-2680L

Rackmount Internet Security Platform with 6 Ethernet Ports and LCD Display

Desktop Internet Security Platform with 3 Ethernet Ports and LCD Display

RACK

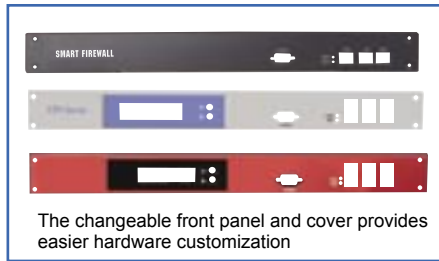
OEM Project Welcome!



FWAP-3680L
Rackmount Solution



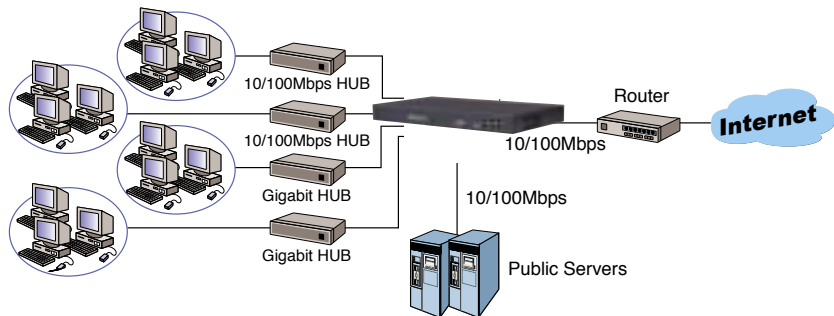
FWAP-2680L
Desktop Solution



The changeable front panel and cover provides easier hardware customization



Expendable two Socket-PCI for add-on LAN module



Flexible Hardware Platform for Rapid Build-up of any Firewall/VPN/IDS Appliance – FWAP-2680/ 3680

The last thing you want to worry about in building a Firewall/VPN/IDS system is having to deal with a suitable hardware solution. The FWAP-2680/ 3680 Internet Security Platform is a Firewall/ VPN/ IDS platform suitable for enterprise users. With the flexibility to have customized front plate and 2, 3, 4 or 6 LAN ports, you can put more of your valuable time and effort on developing the necessary software platform solution to meet your customer's demand.

Main Features

- ◆ **Flexible Front Panel Customization**
The removable front panel and cover make hardware customization easier. Design to be very easy to customize printing, color and even company logo.
- ◆ **Programmable LCD Display Module**
Allows users to easily monitor the system status by reading the LCD panel. Allows page message editing and auto flashing.
- ◆ **Power and Storage**
Support DC power supply and 2.5" HDD anti-vibration kit for mobile operation scenarios.
- ◆ **Low Power Consumption Processor**
High processing performance and low power consumption features of Intel Pentium III/ Celeron/ NS GX1-300MHz processor to meet the needs of high-demanding Internet Appliances.
- ◆ **Console Port for Local Setting**
- ◆ **Scalable Design**
FWAP-3680 Expendable Socket-PCI LAN Modules offering two socket PCI add-on LAN module, the system can support up to 6 LAN ports, either 10/100Mbps Ethernet (LM-102N-x59, LM-102R) or Gigabit Ethernet (LM-2G) on various applications.

Flexible Platform

With the intention to be a flexible Internet Platform, FWAP-2680/ 3680 has designed a few appropriate key features. The built-in IDE HDD allows users to store OS and AP, as well as event logs in the local site. We also have the available Compact Flash Type II socket built inside the platform for customers who wish to have their software OS stored in a CF card. Moreover, the front cover of FWAP-2680/ 3680 can be easily customized for specific customer's logo and graphics.

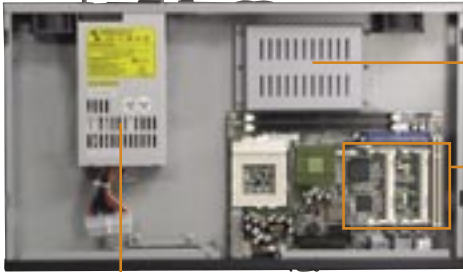
Customized for Internet Application

The FWAP-3680 system provides up to 6 fast Ethernet ports for LAN, WAN, DMZ, and management ports. In addition, it also provides one RS-232 port in the front for local management, maintenance, and diagnostic. For customers who needs expansion, a CF type II card slot can be built externally as well to support wireless LAN application or other CF devices. The programmable LCD display module allows for fast display of system critical information such as IP address, machine status, alerts and warnings. The user also has the option to completely seal and disable the I/O ports such as USB, PS/2, VGA, Parallel, and audio port in order to fit specific requirements. In the same product family, we also have the FWAP-2680, which is a more cost effective solution desktop version of the FWAP-2680.

OEM Projects Welcome

With such flexibility in our Internet Platform, we welcome your OEM projects. We offer the best solution for rapid development of your Internet Platform application needs. IEI is eager to customize your own logo on the front plate of FWAP-2680/3680 for you!

FWAP-3680L



150W ATX Power Supply with PFC Function

One 2.5" HDD drive bay with anti-vibration drive kti

Two Socket PCI

FWAP-2680L



One 2.5" HDD drive bay

SPECIFICATIONS

ITEM	FWAP-2680L	FWAP-3680L
Mount Solution	Desktop and Wall mount	RACK-mount
Embedded board	NOVA-4899	NOVA-7898
CPU	NS Geode GX1-300MHz	Pentium III (133MHz FSB)
System Chipset	NS CS5530A	Intel 815B-E
System Memory	SO-DIMM Up to 512MB DRAM	DIMM Up to 512MB DRAM
SSD	1 x Compact Flash™ type II	N/A
System FAN	One 40 x 40 x 10 mm	Two 40 x 40 x 28 mm
CPU Cooling FAN	Fan-less	CF-507
Power Supply	AC Input 46W Adapter	ACE-816APS
DC Power Supply	N/A	ACE-815C / ACE-815T
Dimension	320(W)x44(H)x165(D)mm	431(W)x44(H)x251(D)mm
Drive Bay	One 2.5" HDD	One 2.5" HDD



NOVA-4899

5.25" NS GX1-300 with multi-LAN embedded board

SPECIFICATIONS

- ◆ CPU: NS Geode GX1-300MHz
- ◆ System Chipset: NS CS5530A
- ◆ System Memory: 1 x SO-DIMM socket supports up to 512MB
- ◆ SSD: 1 x Compact Flash™ Type II socket
- ◆ Audio: AC'97 Codec (Realtek ALC 202A)
- ◆ Ethernet: 3 x 10/100Mbps Intel i82551/Realtek RTL8100BL Ethernet controller
- ◆ I/O:
 - 2 x RS-232 serial port
 - 1 x LPT parallel port supports SPP/ECP/EPP Mode
 - 2 x USB 1.1
 - 2 x EIDE (2 x 40-pin by pin header)
 - 1 x Floppy (34-pin with 2.54mm pitch)
- ◆ WDT: Software programmable supports 1 ~ 255 sec system reset
- ◆ Power Supply Input: 4-pin power housing (5.25" Drive Connector)
- ◆ Power Consumption: 5V@2A, 12V@100mA (With 64MB SDRAM)
- ◆ Operation Temperature: 0~60°C
- ◆ Relative Humidity: 5~95%, non-condensing

ORDERING INFORMATION

- NOVA-4899R** 5.25" NS Geode GX1-300 CPU with three Realtek RLT8100BL LANs
- NOVA-4899N** 5.25" NS Geode GX1-300 CPU with three Intel i82551 LANs

- ◆ Management: Console on the front panel
- ◆ FWAP-2680L/ 3680L supports one A125 16x2 characters LCD display module with RS-232 interface
- ◆ Ethernet:
 - FWAP-3680: External RJ-45 x 6, socket PCI add-on LAN module supports system up to 6 LAN ports. Standard equipped with dual Intel 10/100 Mbps LAN controllers onboard
 - Up to 6x LAN with LAN module daughter board: LM-102R (Dual Realtek 8100), LM-102N (Dual i82559/i82550), LM-2G (Dual Broadcom 5701/5703 Gigabit chip)
 - FWAP-2680: External RJ-45 x 3,
- ◆ WDT: Software programmable, support 1~ 255 sec. system reset
- ◆ Vibration: 5 ~ 17Hz, 0.1" double amplitude displacement
17 ~ 640Hz, 1.5G acceleration peak to peak
- ◆ Shock: 10G acceleration peak to peak (11ms)
- ◆ Operation temperature: 0 ~ 50°C
- ◆ Color: Dark Blue (PANTONE 433C)

ORDERING INFORMATION

- Rackmount Internet Security Platform with 3 Ethernet Ports
FWAP-2680
- Rackmount Internet Security Platform with 3 Ethernet Ports and LCD Display
FWAP-2680L
- Rackmount Internet Security Platform with 6 Ethernet Ports and LCD Display
ACE-816APS
FWAP-3680L / ACE-815C
ACE-815T
- Rackmount Internet Security Platform with 6 Ethernet Ports
ACE-816APS
FWAP-3680 / ACE-815C
ACE-815T
- LM module (Socket PCI connector)
LM-102N-x59 Dual i82559 LAN Module
LM-102R Dual Realtek 8100 LAN Module
LM-2G Dual Broadcom 5701/5703 Gigabit LAN Module

