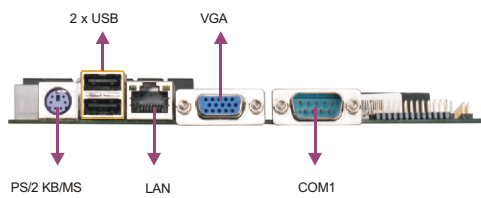
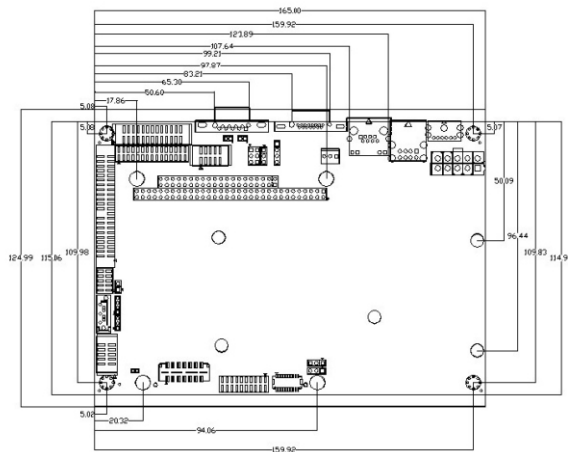
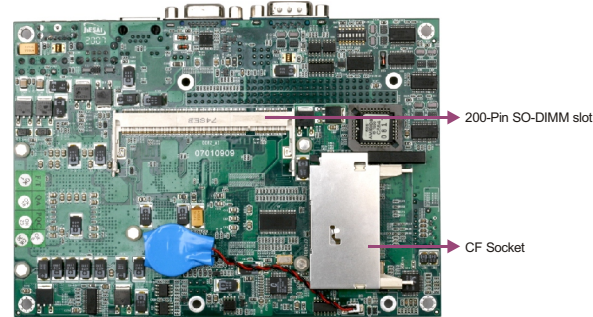
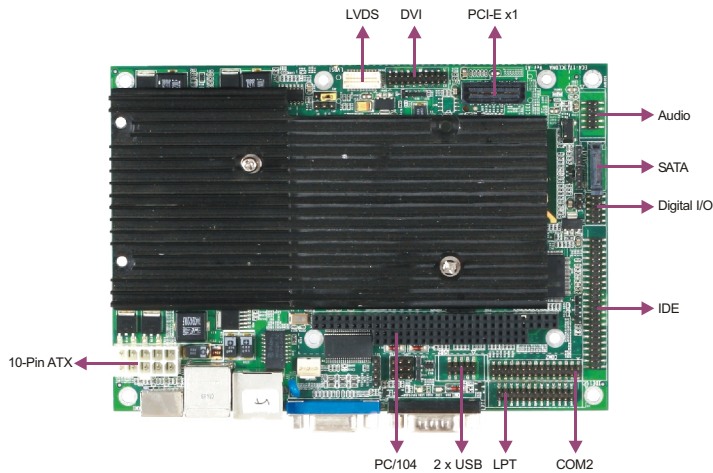


EC4-1713CLDNA

EPIC SBC with CPU and LCD/VGA/SSD/LAN/Audio



Features

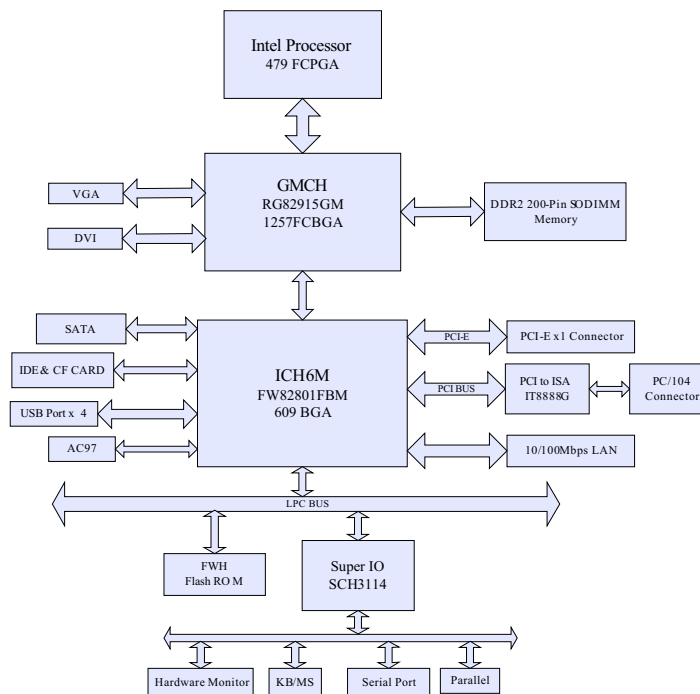
- EPIC-Express form factor
- Intel® 915GM chipset + low-power CPU, fanless
- DVI interface, supporting dual-display
- One SATA port
- One PCI-Express slot

Specifications

System	
Processor	Intel® Celeron® M/Pentium® M CPU, 400/533MHz FSB, Celeron® M 800MHz~1.5GHz, Pentium® M 1.4GHz~2.0GHz
Chipset	Intel® 915GM + ICH6-M
Memory	1 x 200-pin SO-DIMM slot, DDR2 400/533 up to 1GB
Hardware Monitor	Monitors CPU temperature, voltage and fan speed
Watchdog Timer	1~255 sec./min. timer system reset or interrupt, setup by software
Expansion Interface	PC/104 bus, 1 x PCI-Express slot
Storage	
IDE	1 x Ultra ATA 100 port, supporting 2 x IDE device
Serial ATA	1 x Serial ATA 150MB/S interface
Floppy	N/A
CompactFlash	1 x CompactFlash socket
DOC/DOM	N/A
I/O Interface	
USB	4 x USB2.0
Serial Port	3 x RS-232, 1 x RS232/RS422/RS485
Parallel Port	1 x LPT
IrDA	
GPIO	N/A
Audio	AC'97 Codec

Display	
Display Controller	Intel® 915GM integrates Intel® GMA900 based 32-bit 3D graphics engine
Display Memory	128 MB shared video memory
Resolution	CRT mode: 2048 x 1536@75Hz/LVDS mode: 1600 x 1200@60Hz
Dual Display	Supports VGA+LVDS, LVDS+DVI, VGA+DVI dual display
Ethernet	
Ethernet Controller	Intel® EP82562ET Ethernet controller
Speed	10/100Mbps
Connector Interface	1 x RJ45
Mechanical and Environmental	
Dimensions	165mm x 115mm
Operating Temperature	0°C~60°C
Storage Temperature	N/A
Operating Humidity	5%-90%, non-condensing
Power	
Power Supply	10-pin ATX power supply
Power Consumption	N/A
Operating System	
Windows OS	Windows2000/Windows XP
Embedded OS	Linux/XP Embedded

Board Diagram



Available Accessories

Part Number	Name	Description	Qty.
—	Driver CD/Protective film/RoHS	EC4-1713CLDNA	1
2330-000011	Jumper/RoHS	2.0mm pitch	4
2331-002251	Pin header/RoHS	2x20 Pin, 2.54mm pitch, two sides of equal length: 6+6mm	1
2331-002261	Pin header/RoHS	2x32 Pin, 2.54mm pitch, two sides of equal length: 6+6mm	1
2331-002421	Socket/RoHS	PC104 2x32 Pin long socket, plastics height: 8.5mm, pin height: 5.65mm	1
2331-002561	Socket/RoHS	PC104 2x20 Pin long socket, plastics height: 8.5mm, pin height: 5.65mm	1
2360-005031	Y-cable for keyboard and mouse/RoHS	One Mini-DIN port to two PS/2 ports, length: 250mm/RoHS	1
2360-008781	HDD flat cable/RoHS	40 Pin to 44 Pin (2.0mm pitch), length: 550mm/RoHS	1
2360-011211	Audio cable with bracket/RoHS	Three audio jacks to one 2x5 Pin connector (2.0mm pitch), length: 300mm/RoHS	1
2360-011221	Parallel port cable/RoHS	DB25 connector to 2x13 Pin connector (2.0mm pitch), length: 300mm/RoHS	1
2360-014781	Dual USB ports with bracket/RoHS	Two USB ports to one 2x5 Pin connector (2.0mm pitch), length: 550mm/RoHS	1
2360-014891	Power cable/RoHS	One male 20 Pin (2x10) port to female 2x5 Pin connector (4.2mm pitch), length: 150mm/RoHS	1
2360-014901	Serial port cable/RoHS	Three DB9 connector with stud to IDC 2x15 Pin 2.0mm pitch connector, length: 300mm	1
2360-014911	DVI cable/RoHS	DV1-D connector with screws to 2x10 Pin (2.0mm pitch) connector, length: 200mm	1
2360-017961	SATAHDD cable/RoHS	SATA7 Pin to SATA7 Pin with elbow connector, length: 550mm/RoHS	1
2391-002141	Nut/RoHS	M3/GB-T6170-1986/nickel plating	4
2391-004631	Copper hex bolts/RoHS	M3x25-4/CH-M3-25-4-Ni	4
—	Setup Guide/RoHS	AMI/BIOS Setup Guide (for CORE8)	1
—	User's Manual/RoHS	EC4-1713CLDNA	1

Ordering Information

Part Number	Model Number	Description
0030-006630	EC4-1713CLDNA	Motherboard
0030-006631	EC4-1713CLDNA	Motherboard/RoHS
0030-011800	EC4-1713CLDNA COSTDOWN	(SY) Motherboard/COSTDOWN
0030-008720	EC4-1713CLDNA(B)-PPC-CM1.0G	Motherboard/Celeron®-M 1G
0030-008730	EC4-1713CLDNA(B)-PPC-PM1.4G	Motherboard/Pentium®-1.4G
0030-003390	EC4-1713CLDNA(B)-PPC-PM2.0G	Motherboard/Pentium®-2.0G