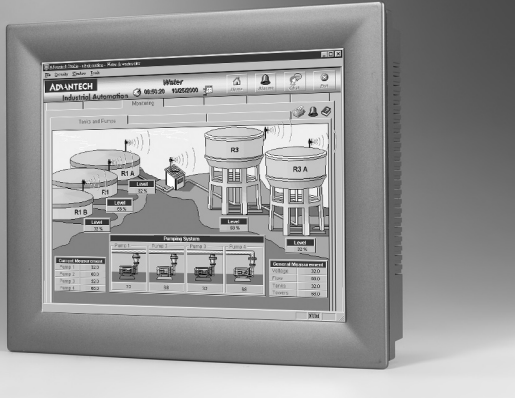


TPC-1570H

Intel® Celeron® M Touch Panel Computer with 15" XGA TFT LCD

NEW



Features

- Intel® Celeron M Processor up to 1GHz on board
- 15" XGA TFT LCD
- Compact design with Al-Mg housing
- Fanless cooling system
- NEMA4/IP65 compliant front panel
- Supports Microsoft® Windows® XP/2000/CE and WinXPe
- Downward I/O cabling
- Automatic data flow control RS-485
- Giga Ethernet and fast Ethernet supported

Introduction

With a high quality TFT LCD display, TPC-1570H is designed with the Intel Celeron M 600MHz/ 1GHz processor as its core. The Intel Celeron M has low power consumption and 600 MHz / 1 GHz operating frequency. This system is fanless although the kernel is powerful. In addition, spindle-free storage makes the TPC-1570H a durable and reliable platform.

For applications where spindle-free storage is not critical, a fast-access HDD module can be used. The rich I/O portfolio meets diverse requests.

Specifications

General

- **BIOS** Award® 256 KB
- **Certifications** BSMI, CCC, CE, FCC, UL
- **Cooling System** Fanless design
- **Dimensions (WxHxD)** 383 x 307 x 65 mm (15.08" x 12.09" x 2.56")
- **Enclosure** Al-Mg and ABS + PC
- **Mounting** Desktop, swing arm or wall (with mounting kit)
- **OS Support** Microsoft Windows XP/2000/CE and WinXPe
- **Power Consumption** 60 W
- **Power Input** 18 ~ 32 V_{DC}
- **Watchdog Timer** 1.6 sec (system)
- **Weight (Net)** 5.5 kg (12.13 lb)

System Hardware

- **Audio Ports** 1 x MIC-in, 1 x Line-in, 1 x Line-out
- **CPU** Intel Celeron M 600MHz/ 1GHz
- **Expansion Slots** 1 x CompactFlash® slot
1 x PCMCIA
- **Graphics Controller** Intel 855 GME
- **Keyboard/Mouse Ports** 1 x PS/2
- **LAN** 2 x 10/100Base-T or 1 x 10/100Base-T,
1 x 10/100/1000Base-T
- **Memory** 512 MB DDR SDRAM (up to 1 GB)
- **Parallel Ports** 1 x Parallel port
- **Serial Ports** 2 x RS-232 and 1 x RS-232/485/422
- **Storage** 1 x CompactFlash® card, or
1 x 2.5" HDD (option)
- **USB Ports** 2 x USB V 2.0
- **Video Ports** 1 x VGA

LCD Display

- **Backlight Life** 50,000 hrs
- **Contrast Ratio** 1:400
- **Display Size** 15"
- **Display Type** XGA TFT LCD
- **Luminance cd/m²** 350
- **Max. Colors** 256 K
- **Max. Resolution** 1024 x 768
- **Viewing Angle** 120°

Touchscreen

- **Lifespan** 1 million touches at single point
- **Light Transmission** Above 75%
- **Pixel Pitch (H x V)** 0.3075 x 0.3075 mm
- **Resolution** 1024 x 1024
- **Type** 8-wire, analog resistive

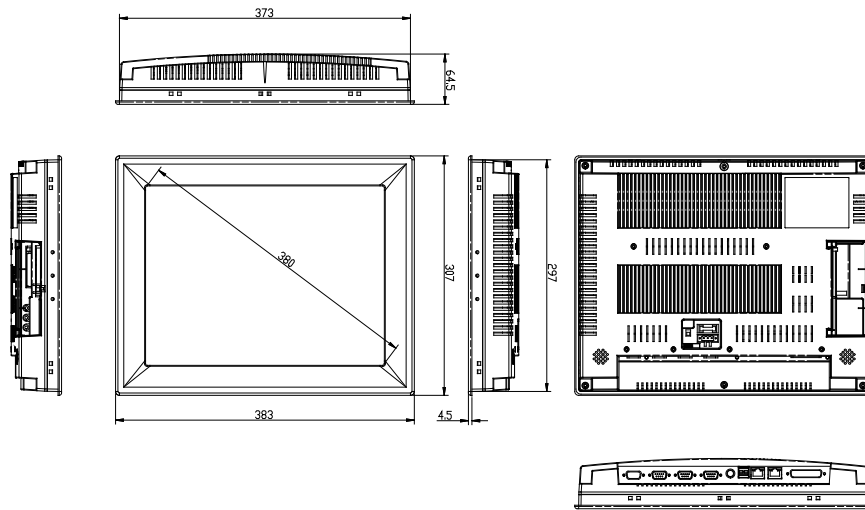
Environment

- **Humidity** 10 ~ 95% RH @ 40° C, non-condensing
- **Ingress Protection** Front panel: NEMA4, IP65
- **Operating Temperature** 0 ~ 50° C (32 ~ 122° F)
- **Vibration Protection** With CompactFlash: 2 grms (5 ~ 500 Hz)
With HDD: 1 grms (5 ~ 500 Hz)

TPC-1570H

Dimensions

Unit: mm



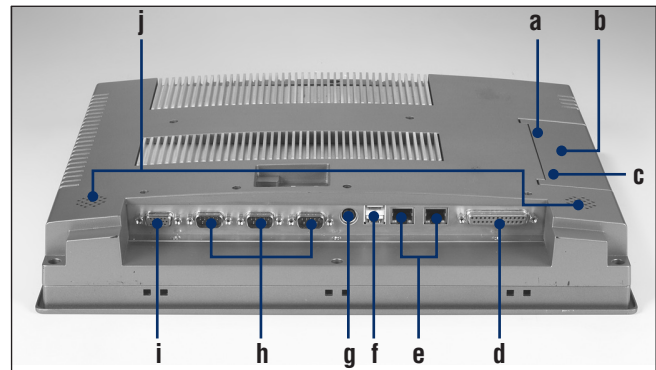
Panel Cut-out Dimension: 373.5 x 297.5 mm

(Operating, random vibration)

Ordering Information

- **TPC-1570H-A1** 15" TFT LCD display touch panel computer with Intel Celeron M 1 GHz CPU, 512 MB DDR SDRAM
- **TPC-1570H-B1** 15" TFT LCD display touch panel PC with Intel Celeron M 600 MHz CPU, 512 MB DDR SDRAM
- **TPC-1570H-A1E** TPC-1570H-A1 with RoHS compliance
- **TPC-1570H-B1E** TPC-1570H-B1 with RoHS compliance
- **TPC-1570 STAND** TPC-1570H desktop stand
- **TPC-1570 WALLMT** TPC-1570H wall mounting kit

Rear View



- a. Compact Flash Slot x 1
- b. PCMCIA x 1
- c. Audio x 3
- d. LPT x 1
- e. LAN x 2
- f. USB x 2
- g. PS2 x 1
- h. COM x 3
- i. VGA x 1
- j. Speaker x 2