



UTP Clarity⁶ Category 6 Patch Panels



Ortronics has expanded its evolution in connector technology to include Clarity⁶ patch panels with 6 or 8 port jack groupings. These high or standard density panels exceed TIA Category 6 requirements for component compliance. The panels are precision targeted to Clarity⁶ patch cords for optimum performance that is field measurable in the channel. The use of dual reactance technology to enhance signal-to-noise ratio, provides a nearly transparent signal path. The Clarity⁶ patch panels include mechanical improvements for easier termination of the larger conductors of enhanced Category 6 cables. The panels are labeled for T568B wiring but come equipped with labels for T568A wiring—making this a truly universal panel solution.

FEATURES

- › Meets Category 6 component specifications TIA/EIA-568-B.2-1
- › ETL 3rd party component tested and verified
- › More transparent to signal with Clarity⁶ cords
- › Dual reactance modular contact array (patent pending)
- › New low emission IDC contacts
- › Standard termination practice—110 tool
- › Easy lace IDC housing designed to accept larger Category 6 conductors
- › Support T568B and T568A wiring
- › Easy to follow wiring labels, quick and user-friendly, eliminates confusion
- › Supplied label fields
- › Icon compatible
- › Supplied full length metal rear cable management
- › High density or standard density panel design
- › Backward compatible to Category 3, 5 and 5e
- › Available in either 6 or 8 port groupings
- › Centre tuned to Category 6 technology
- › RoHS compliant





UTP Clarity⁶ Category 6 Patch Panels

SPECIFICATIONS

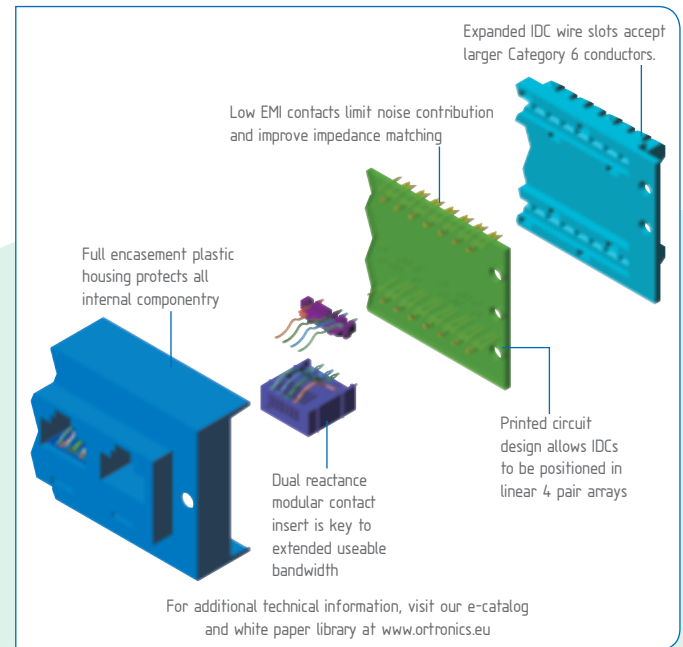
Materials

- > Panel: 2.4 mm aluminium, durable black powder coat finish
- > Module: high impact plastic housing
- > Flame retardant UL[®] 94V-0
- > Fully encased printed circuitry protection
- > Modular contacts: beryllium copper, nickel under plating and minimum 50 micro-inches of gold in contact area
- > IDC contacts: phosphor bronze, nickel under plating and tin lead over plate. Serve 22-24 AWG
- > Compatible with 110 impact tools

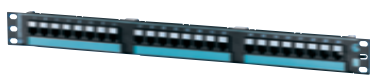
Performance

- > Meets Category 6 component requirements TIA/EIA-568-B.2-1
- > Meets FCC part 68 subpart F
- > Rated for 750 plug insertions
- > Exceeds 100 gram requirement
- > UL 1863 listed, file #E131600
- > Exceeds IEEE 802.3af DTE power specifications by 500%

CLARITY⁶ TECHNOLOGICAL ADVANCEMENTS



Clarity⁶ Modular to 110 Patch Panels



High density with 6 and 8 port modules, Category 6



OR-PHD66U24

Part No.	6 port modules	Description	Rack Units
OR-PHD66U24		24 port	1
OR-PHD66U48		48 port	2
OR-PHD66U96		96 port	4
Part No.	8 port modules	Description	Rack Units
OR-PHD68U24		24 port	1
OR-PHD68U48		48 port	2
OR-PHD68U96		96 port	4

RELATED PRODUCTS

- > TJ6 series of Category 6 Tracjacks
- > MC6 series of Category 6 patch cords
- > 110ABC6 series of Category 6 110 blocks
- > Mighty Mo 6 cable management system

Clarity, Mighty Mo and TracJack are registered trademarks of Ortronics, Inc.

Clarity⁶ Modular to 110 Patch Panels



Standard density with 6 port modules, Category 6



OR-PSD66U24

Part No.	Description	Rack Units
OR-PSD66U12	12 port	1
OR-PSD66U24	24 port	2
OR-PSD66U48	48 port	3
OR-PSD66U96	96 port	6