

Alcatel-Lucent TSM-8000

FAULT MANAGEMENT SYSTEM

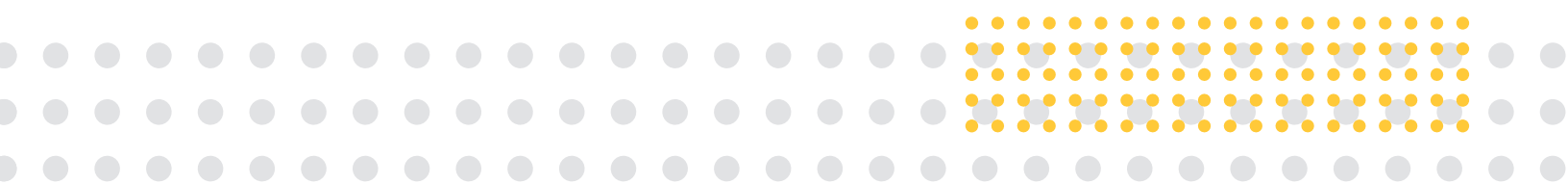
O V E R V I E W

The Alcatel-Lucent TSM-8000 provides highly reliable fault management and control of modern telecommunications networks. The TSM-8000 is a graphically oriented element management system. It is scaleable through software keys to support small, medium, or large telecommunications networks. The TSM-8000 supports multiple users, multiple networks and multiple protocols. It automatically collects and stores alarm, status and performance data from the monitored transmission system equipment. This information is displayed both graphically and textually. The TSM-8000 also provides

comprehensive reports for all current and historical activity for the entire network including all operator actions

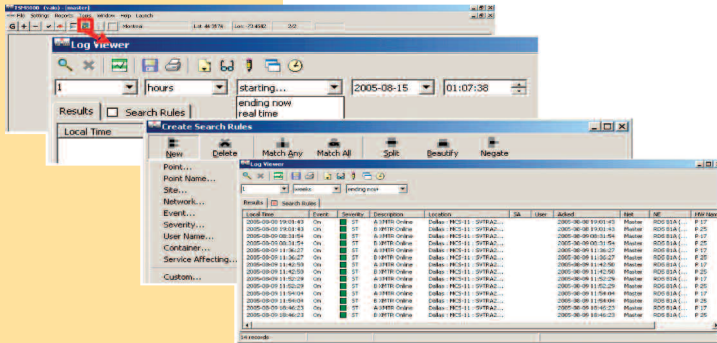
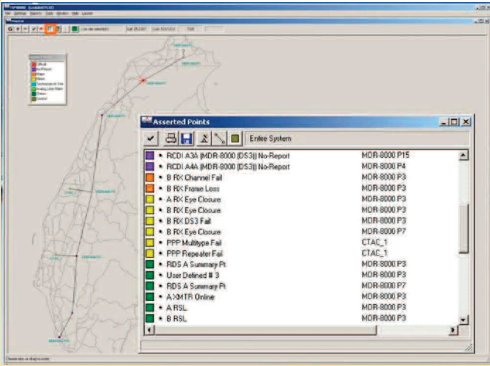
The TSM-8000 supports SNMP (V1, V2 and V3), TL1 and MCS-11 protocols for fault management. It uses a Client/Server architecture residing on MicroSoft Windows® platform.

Remote access, alarm paging and e-mail notification are standard features. Custom audible alarms, paging and e-mail notifications keep users updated to network status. As an optional feature the customer can assess the TSM-8000 via a Web Browser for remote visibility where access to the Internet is available.



VERSATILE NETWORK VIEWS

- Network view customizable by user
- Virtual equipment using arbitrary alarm grouping
- Virtual alarms using Boolean logic and time weighting
- Alarms and controls grouped by user-defined functionality
- One click access to highest priority unacknowledged alarm
- One click access all current alarm activity
- Transmission and telemetry networks monitored
- Multiple active masters supported
- Concurrent geographic and alarm log network views



FLEXIBLE REPORTS

- Alarms, controls and user actions recorded to history log
- Customizable reports sorted by time, date, network, equipment attributes, or operator actions.

ENHANCED NETWORK RELIABILITY

- Redundant telemetry architecture
- Monitored telemetry channels
- Monitored server and client operation
- Two click last hour and last day reports
- Automatic periodic user-defined reports

FULL FEATURED CONTROLS

- Control permission by network or equipment group
- Positive operational notification

HIGH RELIABILITY HARDWARE

- Mirrored hard drives
- Hot swappable power supplies
- Supports multiple active manager topology

MODERN PROTOCOL SUPPORT

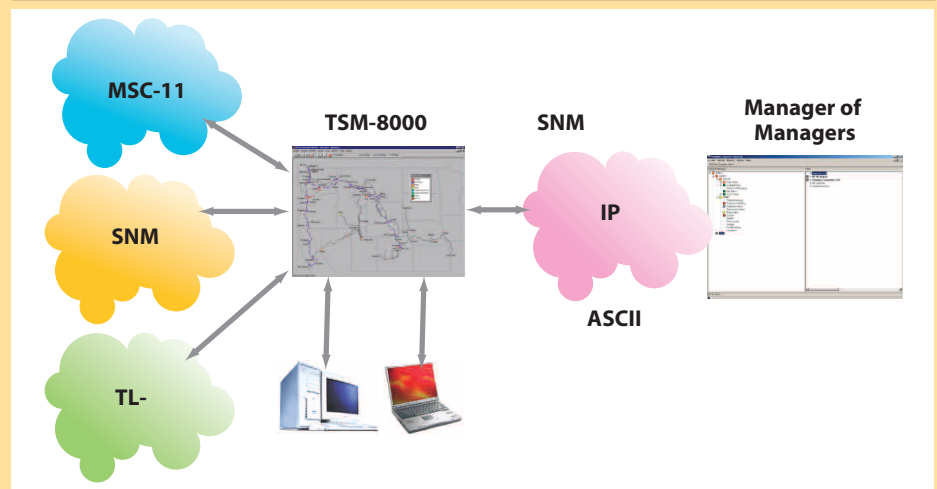
- SNMP or ASCII reporting to higher level manager of managers
- SNMP, TL-1 and MCS-11 surveillance of network elements

ALCATEL - LUCENT SERVICES SUPPORT OPTIONS

Data base configuration

- On site installation and test
- Vendor or customer location training
- Customization of equipment unique TL-1 and SNMP alarms and controls
- Custom telemetry network design

TSM-8000 Architecture



GENERAL CHARACTERISTICS:

- 110 or 220 VAC
- Rack Mountable (standard) or Desktop
- Interfaces to higher level manager via ASCII or SNMP V2c (optional)

TSM-8000

Simultaneous Users:	Up to twenty five
Network Elements:	Scalable 32, 64,128, 256, 512, or 1024 (Upgrading to a larger system only requires additional software)
Architecture:	Client-Server
Server OS:	Windows 2003® Server
Client OS:	Windows XP Pro®
Server:	Rack (19") mounted PC
Client:	Desktop (or laptop) PC
Power Requirements:	110 or 220 VAC

TSM-8000 SC

Users:	One
Network Elements:	Up to 128
Operating System:	Windows XP Pro®
Architecture:	Stand-alone Computer (Desktop)
Power Requirements:	110 or 220 VAC

ABOUT ALCATEL-LUCENT WIRELESS TRANSMISSION:

With more than 50 years of experience in wireless transmission, Alcatel-Lucent provides the solid foundation that continually fosters the visions for the future. As a pioneer in commercial point to point microwave, Alcatel-Lucent has demonstrated leadership in wireless technology.

Alcatel-Lucent's history of design innovation began when the former Collins Radio Company developed the first commercial microwave radios in the 1950s. Alcatel-Lucent maintains the Collins tradition, setting the industry standard for microwave communications all over the world with scalable, reliable, economical and readily deployable wireless backbone communications systems.

In the last five years, Alcatel-Lucent has installed more than 300,000 microwave radios in more than 150 countries. For more information, visit www.alcatel-lucent.com/microwave or call 1-800-ALCATEL.

www.alcatel-lucent.com

Alcatel, Lucent, Alcatel-Lucent and Alcatel-Lucent logo are trademarks of Alcatel-Lucent. All other trademarks are the property of their respective owners. The information presented is subject to change without notice. Alcatel-Lucent assumes no responsibility for inaccuracies contained herein.
© 2007 Alcatel-Lucent. All rights reserved. 10-15-07 523-0620207-005A3J