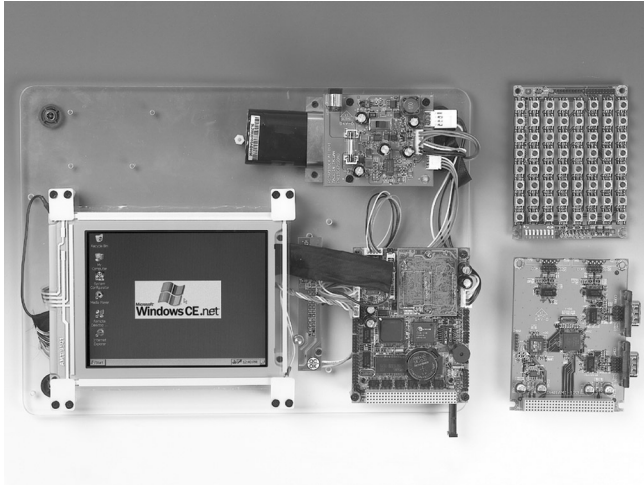


PCM-7220 Evaluation Kit

2.5" OS-ready Intel® XScale® PXA255
Processor SBC, Windows® CE .Net / Linux



Features

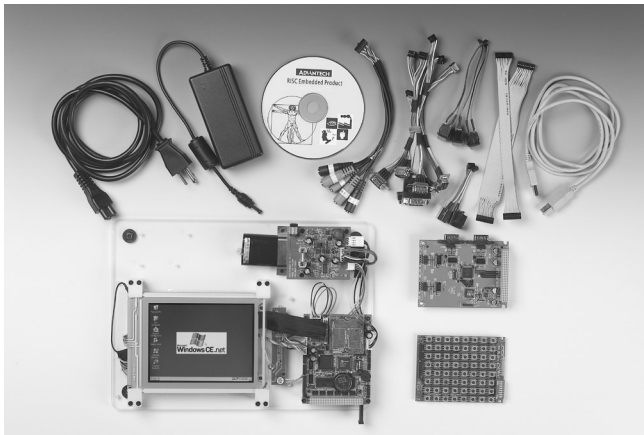
- Intel® XScale™ technology
- Embedded PCM-7220S-230CE main board
- 5.7" STN QVGA LCD display with touchscreen
- Integrated 4-cell Battery pack and charger system
- 8 x 8 Matrix keypad or 8 DI & 8 DO function bundled with selection utility
- 4-COM AMI-120 module is bundle for function expansion
- Complete SW support with SDK for application development
- Binary format BSP (Board Support Package) optional on a project basis.

Introduction

The PCM-7220 Platform Evaluation kit integrates a package that provides customers an effortless system platform for project evaluation, application development and solution feasibility testing that decreases lead-time and lowers initial expense and investment.

Evaluation kit based on Intel® XScale™ technology makes everything easy, simple, and risk-free

This PCM-7220 evaluation kit integrates a certified functional peripherals in a battery-powered pack under both Windows® CE .NET or Embedded Linux, allowing a functional and risk-free project development and implementation from the very beginning. This evaluation kit includes a power core and Advantech Software Support CD, the Evaluation kit also contains a 2000 mAH (4S1P) Li-Ion battery pack, one 4-COM AMI-120 module and one 8x8 Matrix Keypad integrated with a DI/DO interface, along with all necessary cables. Bundled parts/components include the fully tested and certified PCM-7220 main board.



Specifications

System M/B kernel

- **Main Board** PCM-7220S--230CE
- **CPU** Intel® PXA255 processor at 400 MHz, based on Intel® XScale™ technology
- **System Memory** 64 MB SDRAM on board
- **Flash Memory** 32 MB on Memory Module (CE solution pre-installed)

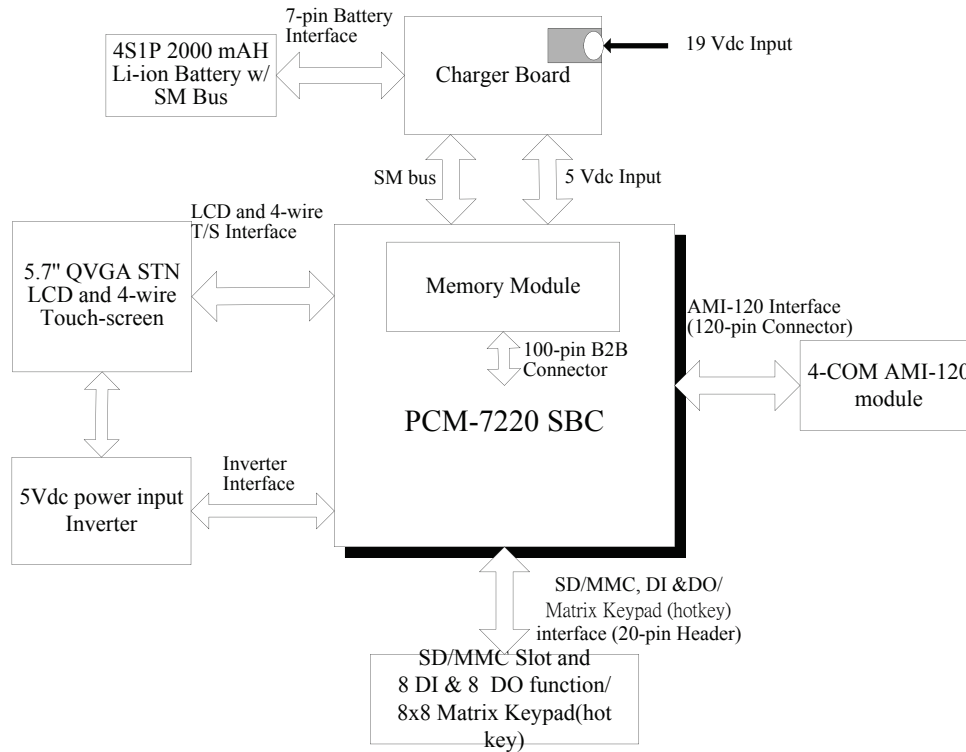
Display module

- **LCD** 5.7" QVGA, STN 8-bit LCD (NAN-YA LCBFBTB61M23)
- **Touchscreen** 4-wire resistant Touchscreen

Charger board

- **Battery pack** 4S1P Li-Ion battery cells (2000mAH, 16.8V) through SM bus
- **Power Input** 19 VDC POWER jack
- **Power Switch** Turn on/off the power supply from Battery or DC source
- **Matrix Keypad** 8 DI & 8 DO/8x8 Matrix Keypad, configured by software
- **8x8 matrix keys (hot key)** Programmed by CPLD as hot key or character key, the key is defined by Advantech, but can be modified by users in their own defined
- **Digital Input/Output (Default setting)** 8 x DO indicators by LED
8 x DI dip switch for configuration
- **Software utility for setting and configuration**
 - 1) Configure default setting for Matrix keypad or DI/DO
 - 2) Define keys of 8x8 matrix keys
- **AMI-120 solution module** 4-COM AMI-120 module (AMI-4COM-01) for function expansion

Board Diagram



- 1 Applied Panel Computing
- 2 Industrial Computing Platform
- 3 Compact PCI
- 4 Industrial Workstation & Panel Computing
- 5 Industrial I/O

Packing List

- **Advantech Software Support CD** Selected Windows® CE .NET models
- **License agreement** Windows CE .NET end user license agreement (for Windows® CE .NET model only)
- **Stylus** Plastic stylus for touchscreen input
- **Cable kit :**
 - 1 x USB Client ActiveSync cable
 - 3 x Reset Button
 - 1 x Audio cable
 - 1 x Ethernet cable
 - 1 x USB cable
 - 1 x DI/DO cable
 - 1 x SD/MMC cable
 - 4 x RS-232 cable
 - 1 x RS-485/232 cable
 - 1 x null modem cable
 - 1 x JTAG cable

- Display Control: on/off, brightness and contrast tuning, resolution setting
- WatchDog: WatchDog timer setting
- DI/DO verification or matrix keys (hot key) setting
- Miscellaneous: setting for registry, ActiveSync, etc utilizes the free space of flash ROM as persistent storage
- **Intel Persistent Storage Manager** save/overwrite/remove the registry setting
- **Regflash utility**

Ordering Information

- **PCM-7220S-030CE** Intel® PXA255 processor at 400 MHz, 64 MB SDRAM onboard (Memory Module interface reserved), with Windows® CE .NET solution integrated
- **PCM-7220S-230CE** Intel® PXA255 processor at 400 MHz, 64 MB SDRAM onboard, 32 MB flash on Memory Module, with Windows® CE .NET solution integrated
- **PCM-7220-0K0CE** PCM-7220 Evaluation Kit system based on PCM-7220S-230CE
- **PCM-7220-CK001 (optional)** Cable kit for PCM-7220 series

Software Utility bundled with Windows® CE .NET solution

System Utility bundled in Advantech Windows® CE .NET solution pack in PCM-7220 models includes:

- **System Configurator**
 - General Information: memory status and software version information
 - Touch-screen Calibration