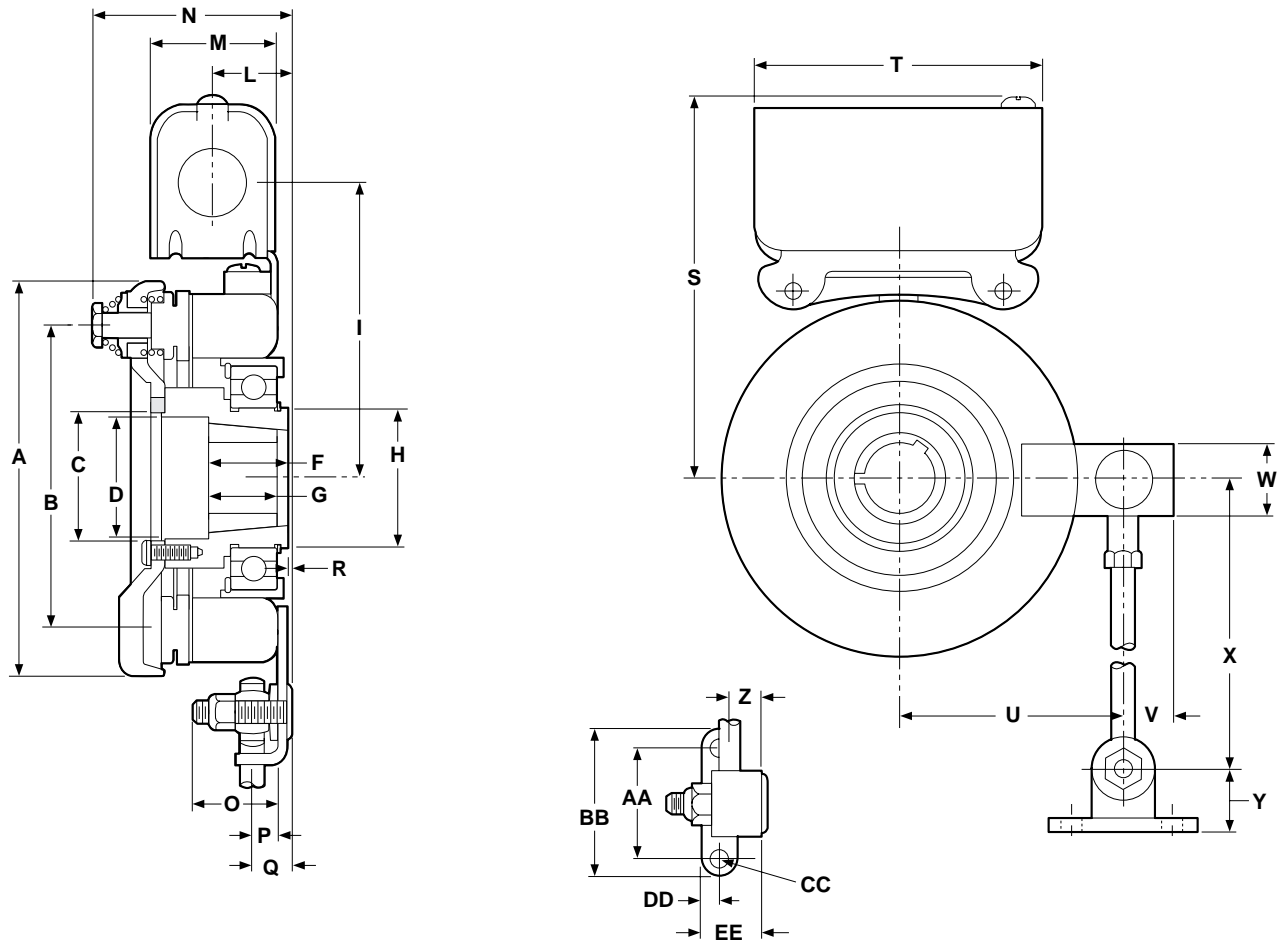


EB-375, EB-475, EB-650



Adapter Requirements

For thru-shaft mounting, specify bore size. For EB-475 and EB-650 order bushing separately. EB-375 does not require a bushing.

For motor mounting, order adapter separate (see page 51).

Bore Sizes and Keyway

Size	Bore Dia.	Keyway
375	.626/.625	3/16 x 3/32
	.501/.500	1/8 x 1/16
475	.500/.563	1/8 x 1/16
	.625/.875	3/16 x 3/32
	.938/1.000	*1/4 x 1/8
650	.500/.563	1/8 x 1/16
	.625/.875	3/16 x 3/32
	1.250/1.313	1/4 x 1/8
	1.313/1.375	5/16 x 5/32

*Key Furnished

All dimensions are nominal, unless otherwise noted.

Size	A Max.	B Dia.	C Min.	D Dia.	E	F	G	H Dia.	I	J	K	L	M	N Max.	O
375	4.078	3.125	.7505	–	.031	1.656	–	1.375	3.344	10-32 UNF -3A x 1/4	.188	1.047	1.547	2.438	.844
475	5.172	4.000	1.663	1.594	–	1.000	1.000	1.781	3.875	–	–	3.031	1.547	2.922	1.094
650	6.578	5.125	2.343	2.281	–	1.313	1.000	2.563	4.656	–	–	3.031	1.547	3.109	1.031

Size	P	Q	R	S Max.	T	U	V	W	X	Y	Z	AA	BB	CC	DD	EE
375	.281	.625	.094 Min.	4.453	3.750	2.453	.656	1.000	8.000	.781	.359	1.500	2.000	.270 .260	.250	.781
475	.313	.531	.125 Max.	4.984	3.750	3.094	.781	1.000	10.000	.688	.391	1.500	2.000	.270 .260	.250	.781
650	.344	.641	.203 Max.	5.766	3.750	4.063	.781	1.125	11.000	.844	.438	1.500	2.000	.270 .260	.250	.781

Specifications

Model Size	Voltage DC	Static Torque (lb. ft.)	Max. Speed RPM	Inertia-WR ² (lb. ft ²)		Total Weight lbs.
				Arm. & Carrier	Hub	
EB-375	6, 24, 90	16	5000	.010	.001	4
EB-475	6, 24, 90	30	4500	.072	.006	7
EB-650	6, 24, 90	95	3600	.106	.010	11.3